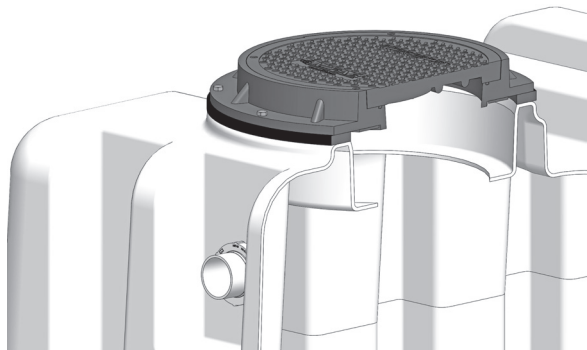




DIRECT CONNECT LID - SUFFIX -DCL

For above ground installations, the standard lid design is often not needed. With the -DCL option, the lid can be bolted to the top of the SuperMax®. A gasket is supplied to install between the top of the interceptor and the underside of the lid.

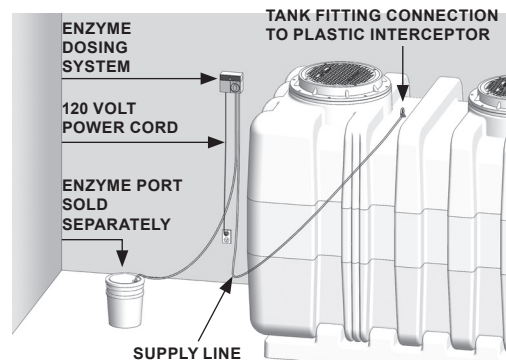
The direct connect gasket (part # SM-MI-G-PL-PCG) and hardware (part # HS-26) are shipped standard with every SuperMax interceptor (two of each).



ENZYME DOSING PUMP SYSTEM – SUFFIX -DS

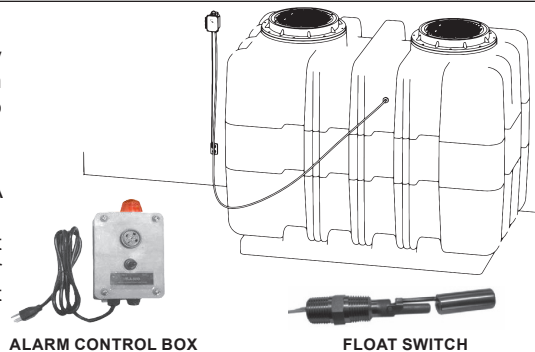
The purpose of the enzyme dosing pump is to release grease and bacteria eating enzymes into the grease interceptor to consume the accumulated grease. The enzyme dosing pump can be ordered with any MIFAB grease interceptor. It is ideal for grease interceptors that are located in high volume kitchens.

The enzyme dosing pump system includes a 120 volt automatic dosing pump with a programmable 24 hour timer and dosage run time. The system also includes 15' of poly tubing.



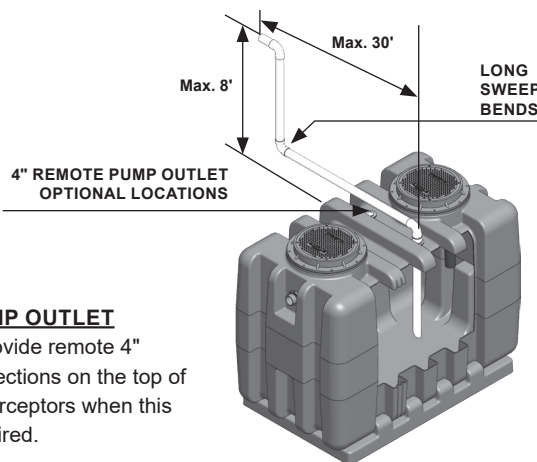
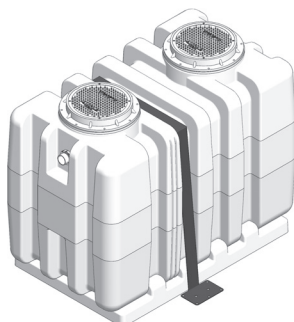
HIGH LEVEL ALARM The purpose of the High Level Alarm is to monitor and send an audible and visual alarm when the interceptor's grease or oil capacity is approximately 75% full. (Specify suffix -HLA) High level alarm systems can be installed on any MIFAB® grease or oil interceptors to allow the owner to monitor grease and oil levels. This permits the interceptor to be maintained when required.

The -HLA option includes an alarm control box that is weatherproof rated NEMA 4/4X, 6' 120VAC Power Cord, 360° viewable alarm light, 85 dB @ 10' solid tone alarm and a silence and test button that is to be mounted to the nearest structure. It also includes a float switch that is mounted inside the interceptor for oil or grease level detection and is connected to the alarm control box. Note that the the alarm control box and float switch are not installed at the MIFAB factory. They need to be installed on site.



ANCHOR KIT

The Anchor Kit is used where there is a high water table and buoyancy may be a problem. (Suffix -AK)



REMOTE PUMP OUTLET

MIFAB® can provide remote 4" pump out connections on the top of SuperMax® interceptors when this function is required.

CONTROL BOX.

For jurisdictions that require the installation of an external sampling port, the MIFAB® XL-MI-G-SP is the answer. It is manufactured from HDPE and available with a standard AASHTO H-20 load rated cover.

Option -SP for existing construction. Inlet and Outlet are at the same height.

Option -SP-OF for new construction. Inlet is located above the outlet.



Specify Option -SP for existing construction.



Specify Option -SP-OF for new construction.