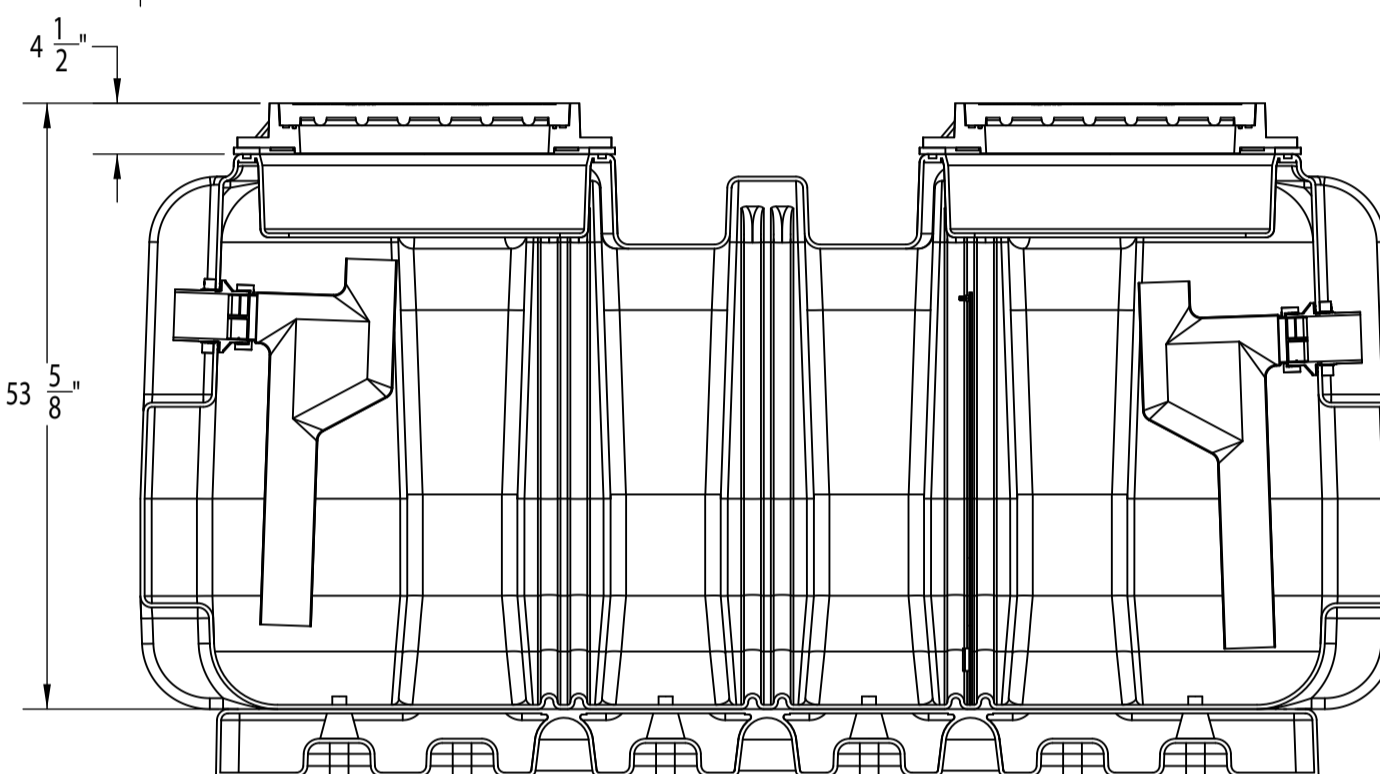
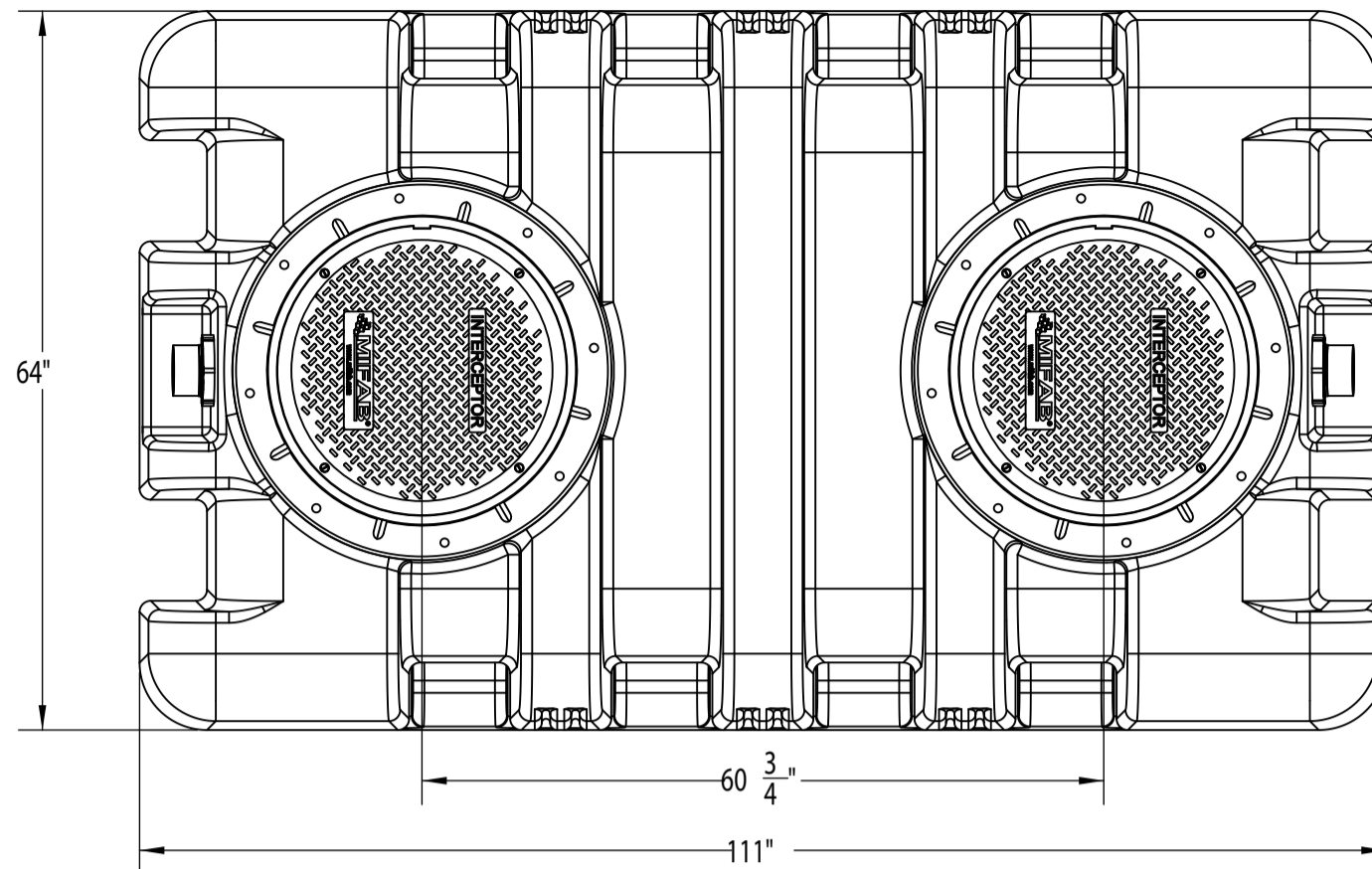


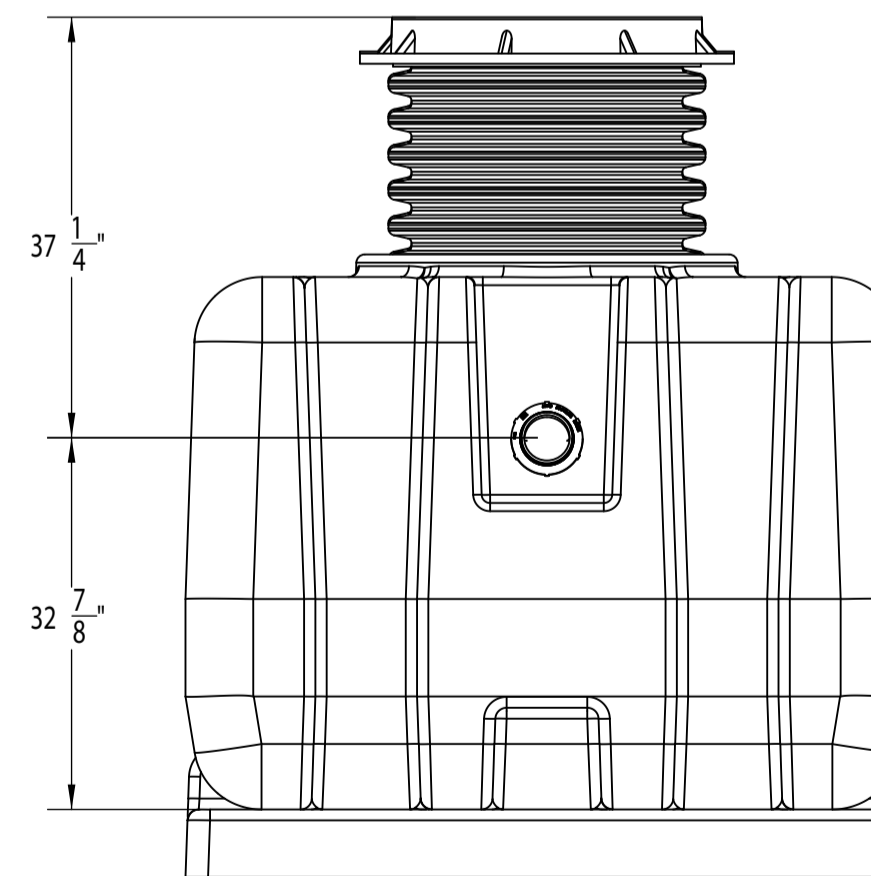
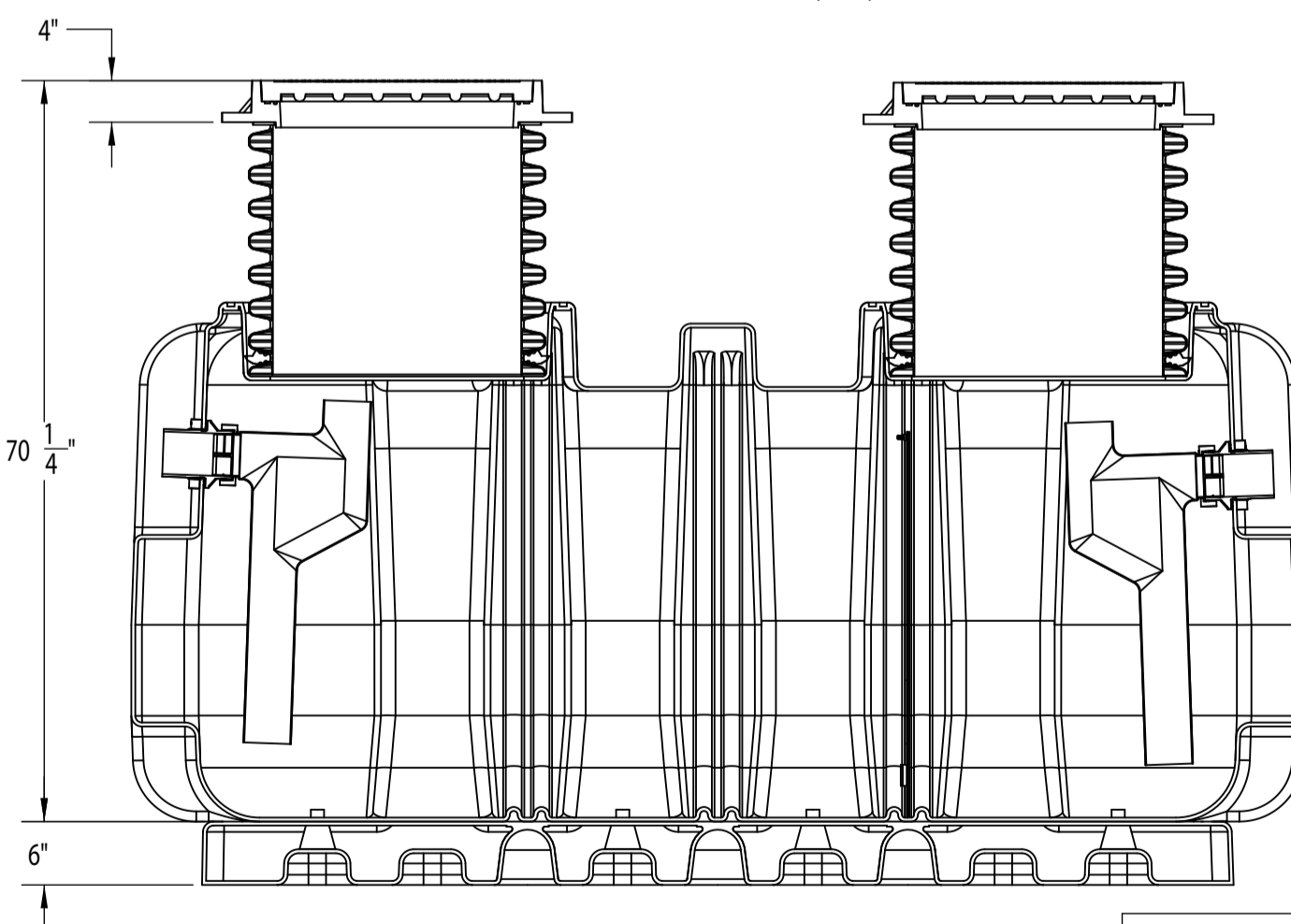
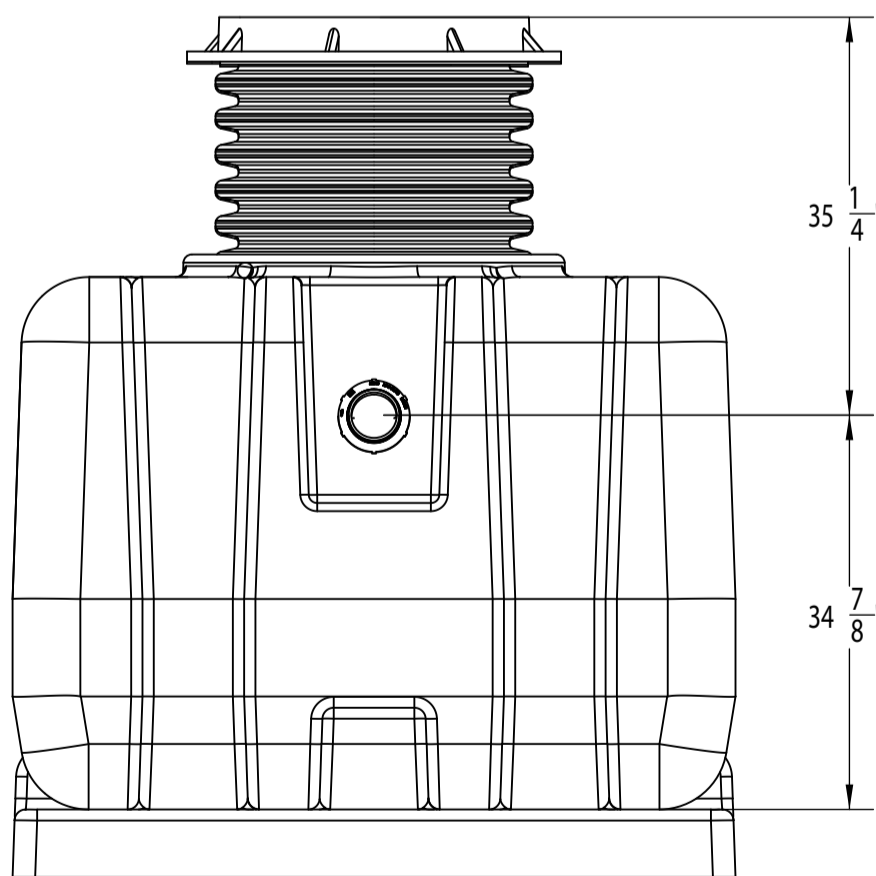
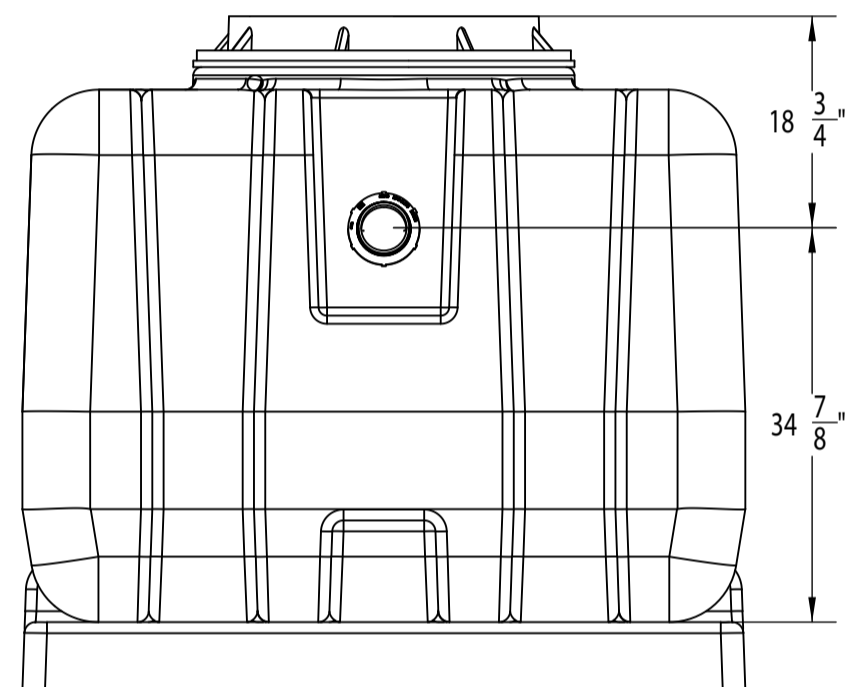
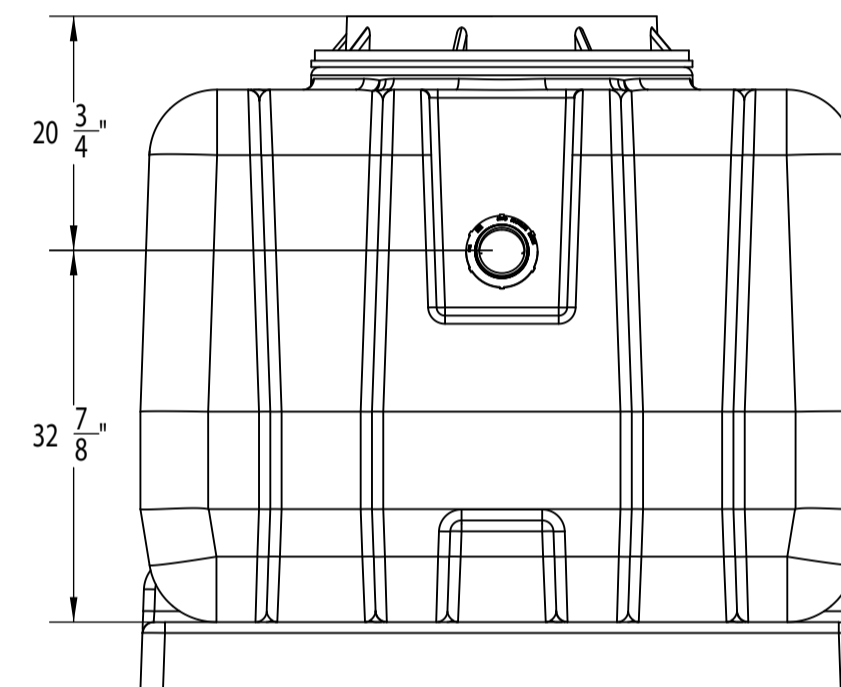
- SUPER-750**
- Inlet and Outlet No-Hub Connections.
 - Liquid Holding Capacity: 750 Gallons
 - H2O Load Rated Access Covers
 - Maximum Operating Temperature: 190Å Continuous

- DETAILS**
- Certified by CSA and IAPMO to ASME A112.14.3, CSA B481, and ANSI Z1001
 - Approved installation to ASME A112.14.3 Type C
 - Factory installed internal piping.
 - 3/8" thick seamless high density polyethylene.
 - Full internal access through lids.
 - Vent not required for proper operation.
 - Designed for above or below ground installations.
 - Integral Anti-siphon Air Relief port.

SUFFIX	OPTIONAL VARIATIONS
-AK	High water anchor kit
-C	Lid extension(specify)
-DP	Dosing pump
-EP	Enzyme port
-F6	6" No Hub inlet/outlet connection
-HLA	High level alarm



SHOWN WITH DIRECT CONNECT LID OPTION (-DCL)



LASER/SHEAR:		UNLESS OTHERWISE SPECIFIED: DIMENSIONS ARE IN INCHES TOLERANCES: FRACTIONAL ± 1/16 ANGULAR: MACH ± 1 A BEND ± 1 A TWO PLACE DECIMAL ± .015 THREE PLACE DECIMAL ± .010 TYPICAL DRAFT ANGLE 2°	NAME	DATE	
WELDED BY:			XX	XX	
CLEAN/PAINT:		MATERIAL DESCRIPTION	Q.A.		TITLE: 750gallon LIQUID HOLD CAP. GREASE INT.
COMPLETED BY:		SEE-BOM	Q.A.		
REVIEWED BY:		FINISH PART	XX		SIZE
NEXT ASSY	USED ON				DWG. NO.
APPLICATION	DO NOT SCALE DRAWING				SUPER-750
					REV
					SCALE: 1:17
					WEIGHT:
					SHEET 1 OF 1

PROPRIETARY AND CONFIDENTIAL
THE INFORMATION CONTAINED IN THIS
DRAWING IS THE SOLE PROPERTY OF
MIFAB, INC. ANY REPRODUCTION IN
PART OR AS A WHOLE WITHOUT THE
WRITTEN PERMISSION OF MIFAB, INC. IS
PROHIBITED.