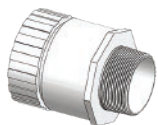


SHIFT AND LIFT

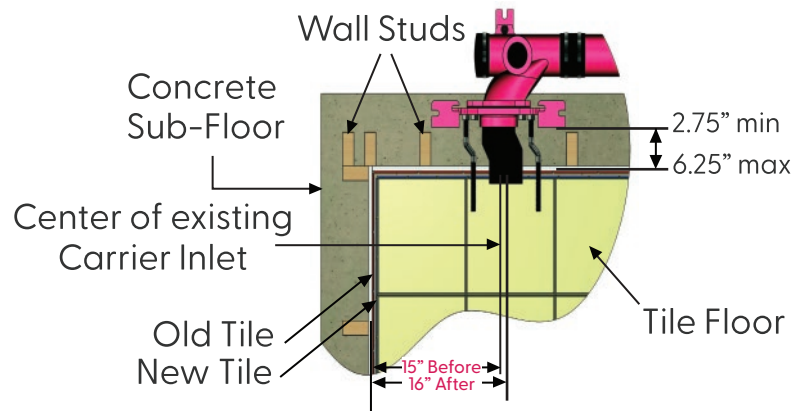
OFFSET THE FIXTURE WITHOUT TEARING OUT THE WALL AND CARRIER!



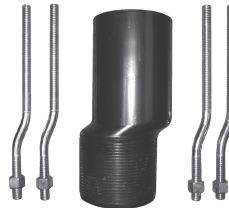
US PATENT #8,887,319



• 4" F.I.P. x 3" M.I.P. PVC adapter available (Part # MC-10-43-ADAPT) to thread into 3" threaded faceplates



PARTS IN KIT



Available in three adjustments

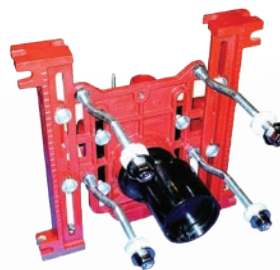
• $\frac{1}{2}$ " Adjustment
Part #: MC-10-PN8R-31-SL-50

• $\frac{3}{4}$ " Adjustment
Part #: MC-10-PN8R-31-SL-75

• 1" Adjustment
Part #: MC-10-PN8R-31-SL-100

Save frustration and expense! Shift and Lift is the solution when the ADA water closet is not between 16" and 18" from the center of the finished wall!

The MC-10 Series is tested with the Shift and Lift offset hardware package to support a 500 lb. load with the rear anchor support.



ANGLE VIEW



TOP VIEW