

# Adjustment **AFTER** the concrete pour

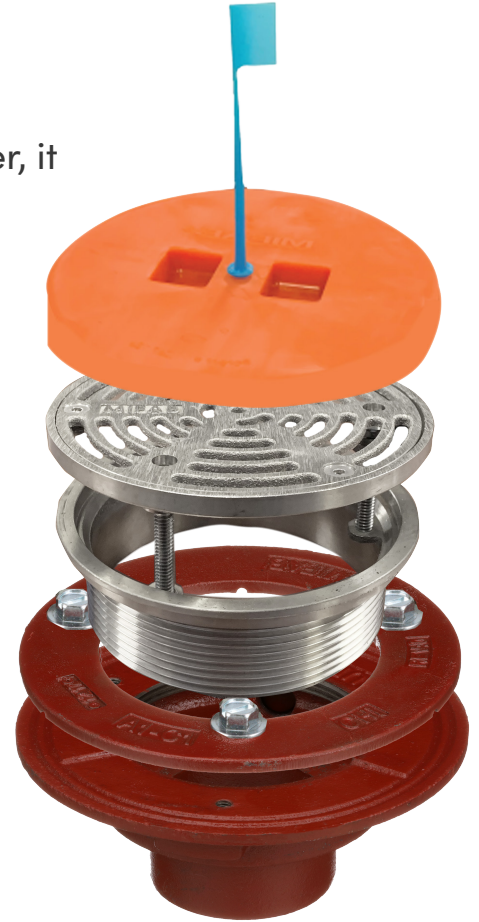
No need to waste time trying to find the finished floor strainer, it is already included in the Top Set® floor drain assembly.

## You don't need to...

- ✗ No shims or washers required to elevate the top.
- ✗ Store the strainer before the concrete pour.
- ✗ Tape over the drain body before the concrete pour.
- ✗ Box out the drain location before the concrete pour.

## Advantage of the Top Set Floor Drain®

- Bring the strainer top to grade without removing it.
- Strainer is "top-set" utilizing 3 Phillips screws in the top of the strainer offering 1 ¼" worth of travel.
- Comes standard with a concrete pour cap so you can install the strainer when you install the drain body.
- Eliminate punch list issues with unlevel or recessed tops
- Same price as our standard nickel bronze strainer.
- Side to side strainer adjustment to level if the drain is knocked unlevel during the concrete pour.



## Top Set Retrofit Frame and Grate

### RTS5-1

MIFAB's RTS5-1 retro-fit ring and grate is designed to be placed into any JaSaWaZ 5" round floor drain strainer.

Simply remove the existing JaSaWaZ grate, place the RTS-UR-1 universal ring into the recessed area of the strainer and connect it with the screws provided. The RTS5-1 frame and grate can then be vertically adjusted and also adjusted side to side to meet the finished floor.