

# Trench Drains

*Leading the industry with  
innovative trench drain solutions*





# 1982

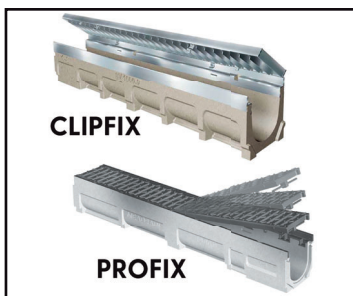
## Our story begins

When MIFAB opened its doors in 1982, there were only two products: access doors and interceptors. Now, MIFAB's product line has grown to a more than 14-division brand and has representatives across the United States, Canada, Central America and the Middle East. MIFAB's logical, function driven product lines replace confusion with simplicity to offer all the features required of today's building practices without the unnecessary duplication.

MIFAB provides quality, engineered plumbing and drainage solutions that were designed with innovation to reduce installation and material costs. MIFAB's products provide high quality, innovative market leading options. MIFAB strives for ongoing product efficiencies and continuous improvement to protect the world's number one resource, water.

In 2002, MIFAB is proud to announce their partnership with the MEA Group to provide an extraordinary trench drain offering. The philosophy of the MEA Group is as simple as it is effective: Their products and solutions are intended to make the work of professionals in the construction industry faster, easier, more economical and safer to make a significant contribution in the success of their projects.





### **“ClipFix” and “ProFix” Grate System**

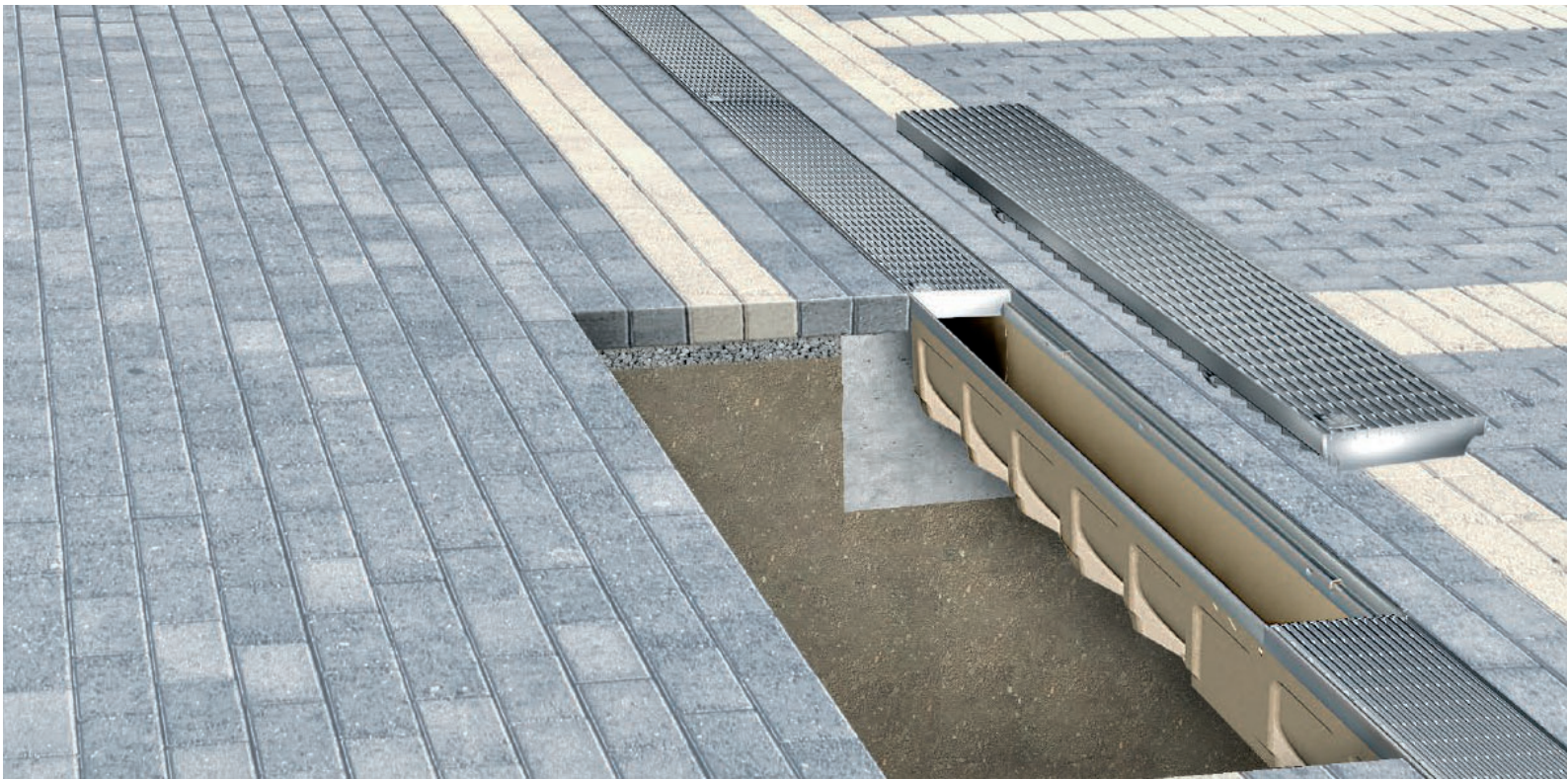
Innovative CLIPFIX grate locking mechanism for plastic, ductile iron, galvanized and stainless steel grates (up to and including Load Class E). Innovative PROFIX grate locking mechanism for Load Class F ductile iron grates.



### **Up to Building Code**

Grates are rated using the industry standard rating systems of EN 1433 and ANSI A112.21.1M. Available in Load Classes A-F to provide the exact solution for your application





### ***ADA Compliant***

MIFAB's inclusive trench drain offering has several options for ADA compliant and Heel Proof grates. Available in different styles and materials.



### ***In House Engineering Team***

MIFAB's experienced engineering team is available to help make your trench experience seamless. They offer support from choosing the optimum trench system, run layouts, Revit or BIM models and overall advice.

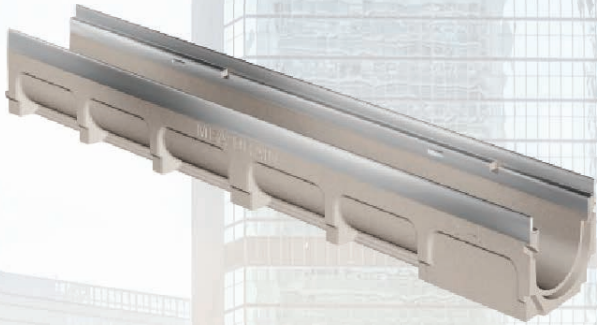




High Quality Materials



## Polymer Concrete



Polymer concrete channels are composed of mineral aggregates and resin to create a durable and high quality channel with grates up to Load Class F. Available in three internal widths: 4", 8", 12" and in three rail options: galvanized steel, stainless steel and ductile iron.

## Glass-Fiber Reinforced Polyester



GRP drainage channels use SMC (sheet molded compound) manufacturing technology to offer the best price and performance for projects with grates up to Load Class F. Available in three internal widths: 4", 8" and 12", and in four rail options: no edge, galvanized steel, stainless steel, and ductile iron edge rails. Ductile iron edge rails only 4" and 8".







## Shallow Depth Channels



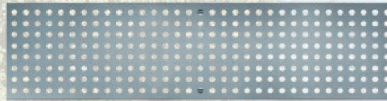
Shallow depth channels are frequently used and recommended in applications where there are depth restrictions due to site conditions (ex. Utilities).



# “Clipfix” Universal Grates



**Galvanized Steel or  
Stainless Steel Slotted**  
Load Class: A, C, E



**Galvanized Steel or  
Stainless Steel Perforated**  
Load Class: A, C



**Plastic**  
Load Class: C



**Galvanized Steel or  
Stainless Steel Mesh**  
Load Class: A, C



**Polypropylene: Heelproof**  
Load Class: A



**Ductile Iron: Heelproof**  
Load Class: C, E



**Ductile Iron: Wave**  
Load Class: C



**Stainless Steel Wedgewire: Heelproof**  
Load Class: B



**Ductile Iron Slotted**  
Load Class: C, E, F

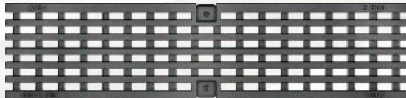
\*Galvanized Ductile Iron  
Available





# Get *more* done in *less* time

**Galvanized Steel or  
Stainless Steel Paverslot**  
Load Class: C



**Ductile Iron: ADA**  
Load Class: C, E, F

\*Galvanized Ductile Iron  
Available









The image shows an industrial or laboratory environment. In the center, there is a large, yellow, L-shaped structure. To the right of this structure, a black vertical pole with a yellow band is visible. The floor is a smooth, light-colored surface. In the foreground, there is a long, narrow metal grate or drainage system. The background is slightly blurred, showing more of the industrial setting.

Maximum  
stability with  
*easy* installation



"MIFAB has excellent trench drain products backed up by better customer service."

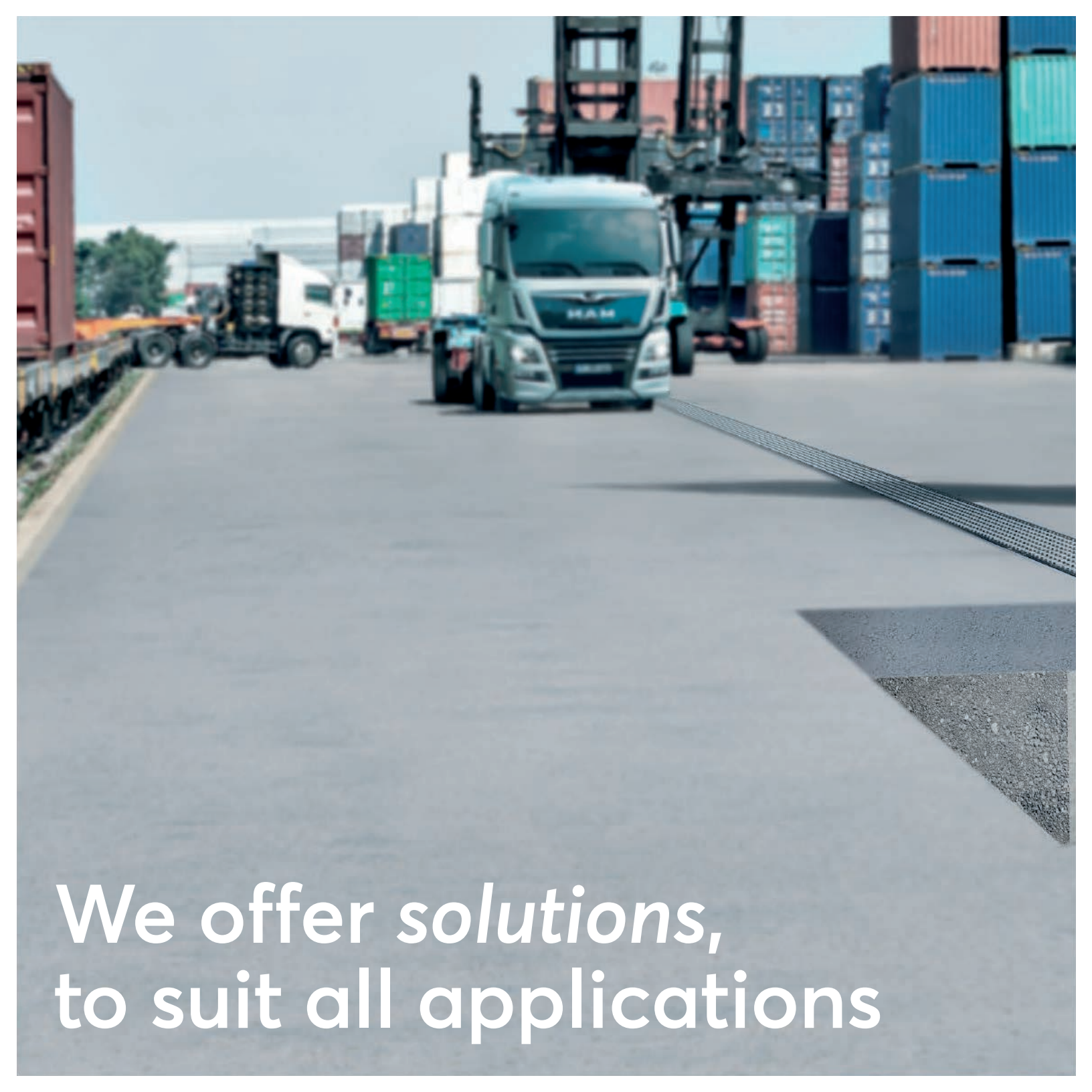
- **Randy Lowe**

*Lowe Plumbing, Atlanta, GA*










We offer *solutions*,  
to suit all applications









"MIFAB's trench drain systems have consistently been a quality product with no surprises upon arrival and installation. They are priced competitively and customers like their features."

- **Mark Barringer**  
*Hughes Supply, Monroe, NC*



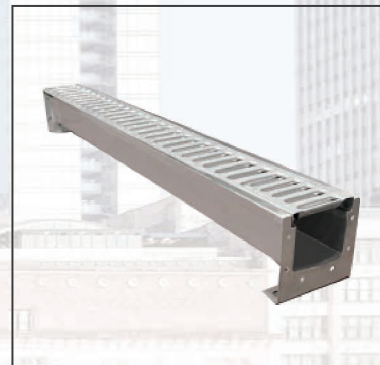
## **MORE MIFAB PRODUCTS**



**CUSTOMIZABLE TRENCH DRAIN  
SYSTEMS IN FIBER GLASS,  
STEEL, AND STAINLESS STEEL**



**ACCESS DOORS  
LIT-043**



**STAINLESS STEEL  
INDUSTRIAL DRAINS  
TDSS-2025**



For our complete range of products  
please visit [www.mifab.com](http://www.mifab.com)  
Customer Service: 1-800-465-2736