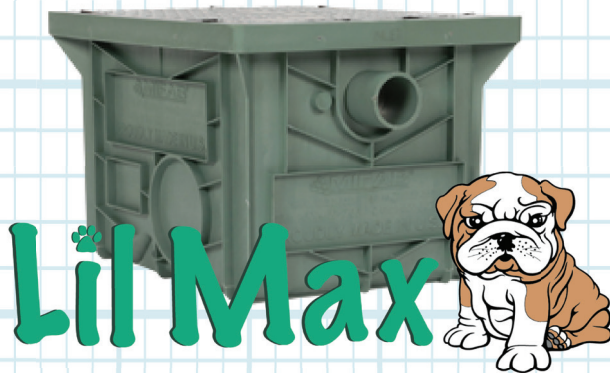




Miami-Dade DERM Interceptor Package

Certified Compliance to DERM. 99% Efficiency.



All of MIFAB's Big and SuperMax interceptors use ADS corrugated pipe extensions (risers). 18" dia. - Big Max and 24" dia. - SuperMax. These are easy and cost effective to buy locally and are not proprietary.



LIT-99-DERM

Understanding Miami-Dade DERM Requirements

Miami-Dade DERM mandates:

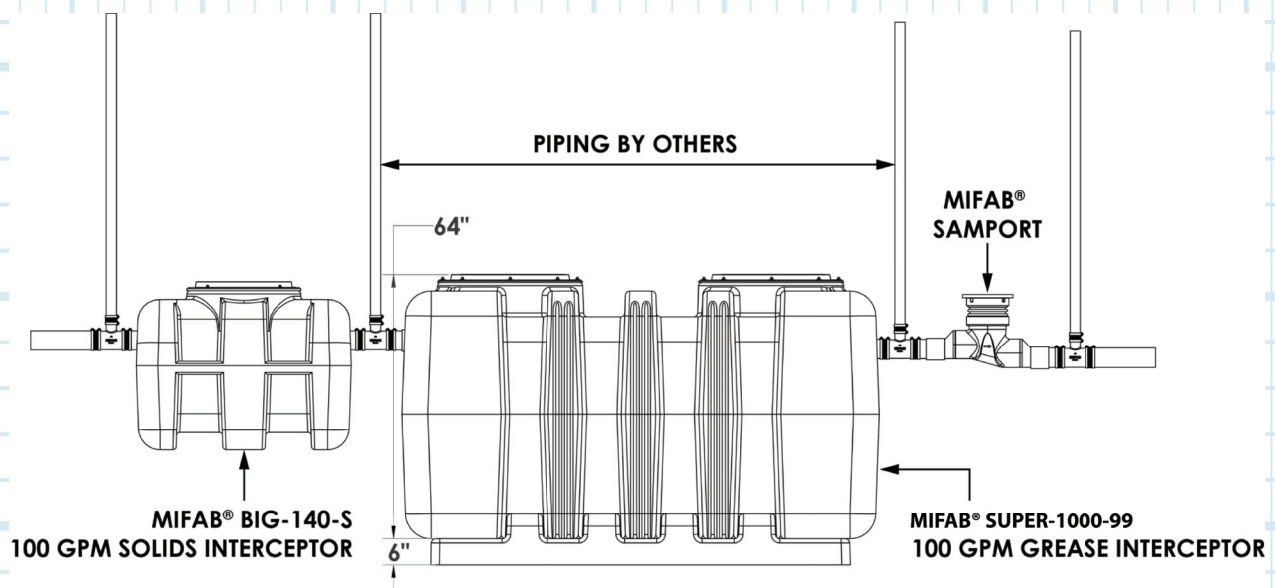
- Solids interceptor upstream
- Grease interceptor (99% efficiency)
- Sampling port downstream

MIFAB's interceptors are third-party tested to 99% efficiency

Manufactured in Chicago for quality control and fast lead times

Full engineering submittal support & online sizing tools

SOLID INTERCEPTOR → GREASE INTERCEPTOR → SAMPLING PORT



SIZING

NOMINAL PIPE SIZE	MINIMUM FLOW RATE per Ch.24-42.6	MAXIMUM FLOW RATE per Manning's formula
2"	20 GPM	20 GPM
3"	23 GPM	46 GPM
4"	50 GPM	100 GPM
6"	147 GPM	300 GPM

Miami-Dade DERM's sizing requirements considers the GPM flow rate and the grease production of the restaurant in order to design the correct grease interceptor system. MIFAB®'s "Size my Interceptor" interactive sizing software makes it easy to size the correct model for your project. The Miami-Dade DERM FOG 2.5 Guidance Manual does not specify the requirements of the solids interceptor and sample port to be used with the grease interceptor. The design engineer will specify this equipment. MIFAB® manufactures all of our grease, oil, solids and specialty interceptors in our Chicago factory.

1 SIZE BY PIPE DIAMETER/FLOW RATE

Hydromechanical grease interceptor sizing using gravity flow rates
(Per Chapter 10 of the Uniform Plumbing Code)

SIZE OF GREASE INTERCEPTOR:

DIAMETER OF GREASE WASTE PIPE	MAX. FULL PIPE FLOW	ONE MINUTE DRAINAGE PERIOD	TWO MINUTE DRAINAGE PERIOD
2"	20 GPM	20 GPM	10 GPM
3"	60 GPM	75 GPM	35 GPM
4"	125 GPM	150 GPM	75 GPM
5"	230 GPM	250 GPM	125 GPM
6"	375 GPM	500 GPM	250 GPM

★ RECOMMENDED

**1/4" inch slope per foot (20.8 mm/m) based on Manning's formula with friction factor of N= 0.012

2 FIND GREASE PRODUCTION VALUE

RESTAURANT TYPE	GREASE PRODUCTION VALUES	GREASE PRODUCTION SIZING METHOD
Low Grease Production	.005 lbs / meal no flatware .0065 lbs / meal with flatware	Frozen yogurt, hotel breakfast bar, sub shop, sushi, deli, bar convenience store, residential
Medium Grease Production	.025 lbs / meal no flatware .0325 lbs / meal with flatware	Cafes, low grease output restaurant, pizza restaurant, grocery stores (with no fryer), ice cream parlor
High Grease Production	.035 lbs / meal no flatware .0455 lbs / meal with flatware	Full fare family, German, Italian, fast food Mexican, hamburger bar and grill and fast food restaurant, medium level restaurants with fryer
Very High Grease Production	.058 lbs / meal no flatware .075 lbs / meal with flatware	Full fare BBQ, fast food fried chicken, full fare Mexican, Steak and Seafood, Hawaiian and Chinese

3

CALCULATE GREASE CAPACITY



MEALS PER DAY

X



GREASE PRODUCTION VALUE
(STEP 2)

X



DAYS PER PUMP
OUT CYCLE

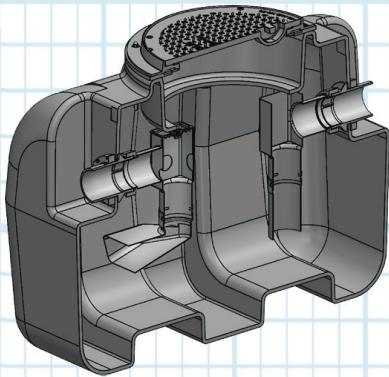
=



**GREASE CAPACITY
NEEDED**

Go to MIFAB®'s Interceptor Sizing Program: www.sizemyinterceptor.com for an easy interceptor sizing tool.

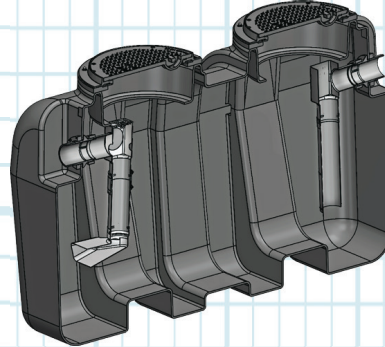
All of MIFAB®'s grease interceptors are tested and certified to the ASME A112.14.3 Standard Type C and D.



BIG-750-99

FLOW RATE (GPM)	50*
LIQUID CAP. (Gal/Cu. Ft.)	140/18.7
GREASE RETENTION CAPACITY (Lbs.)	564
SOLIDS CAPACITY (Gallons)	63

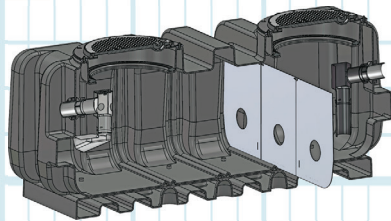
*(ASME A112.14.3.2022, Type D)



BIG-1150-99

FLOW RATE (GPM)	75*
LIQUID CAP. (Gal/Cu. Ft.)	300/40
GREASE RETENTION CAPACITY (Lbs.)	1,811
SOLIDS CAPACITY (Gallons)	135

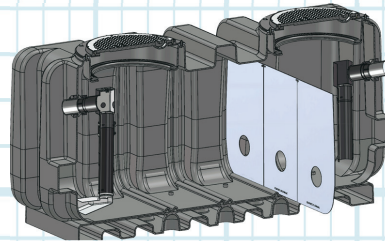
*(ASME A112.14.3.2022, Type D)



SUPER-500-99

FLOW RATE (GPM)	100*
LIQUID CAP. (Gal/Cu. Ft.)	539/72
GREASE RETENTION CAPACITY (Lbs.)	3,356
SOLIDS CAPACITY (Gallons)	242

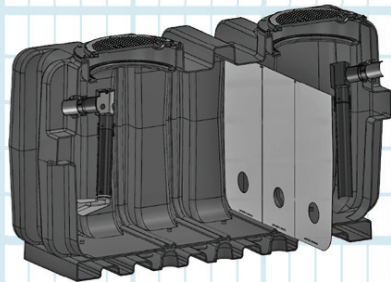
*(ASME A112.14.3.2018, Type C)



SUPER-750-99

FLOW RATE (GPM)	100*
LIQUID CAP. (Gal/Cu. Ft.)	772/103
GREASE RETENTION CAPACITY (Lbs.)	4,148
SOLIDS CAPACITY (Gallons)	347

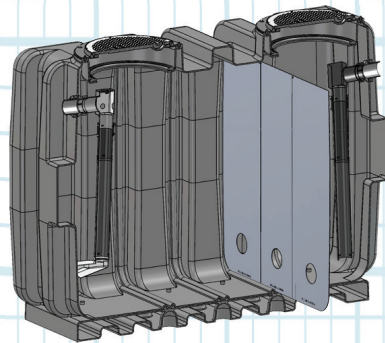
*(ASME A112.14.3.2018, Type C)



SUPER-1000-99

FLOW RATE (GPM)	100*
LIQUID CAP. (Gal/Cu. Ft.)	1,015/135
GREASE RETENTION CAPACITY (Lbs.)	7,615
SOLIDS CAPACITY (Gallons)	456

*(ASME A112.14.3.2022, Type D)



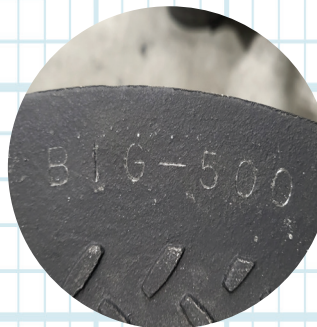
SUPER-1500-99

FLOW RATE (GPM)	100*
LIQUID CAP. (Gal/Cu. Ft.)	1,522/202
GREASE RETENTION CAPACITY (Lbs.)	10,380
SOLIDS CAPACITY (Gallons)	675

*(ASME A112.14.3.2022, Type D)

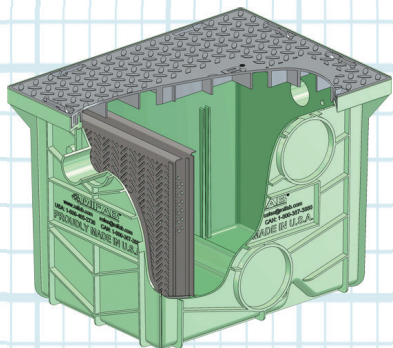


All of MIFAB®'s Big and SuperMax interceptors are shipped standard with a ductile iron, H-20 load rated lid with a pickable design - no extra cost.



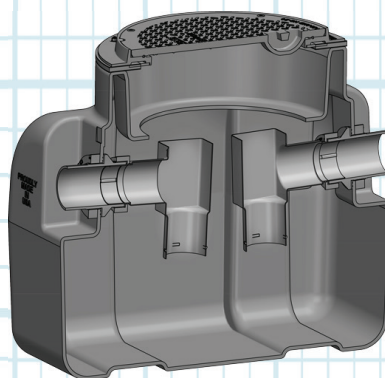
All of MIFAB®'s Big and SuperMax interceptors are shipped standard with their model number permanently etched into the top cover - for easy identification after installation.

All of the above listed MIFAB® grease interceptors are tested and certified as a single unit to comply with Miami - Dade DERM requirements and include an internal flow control.



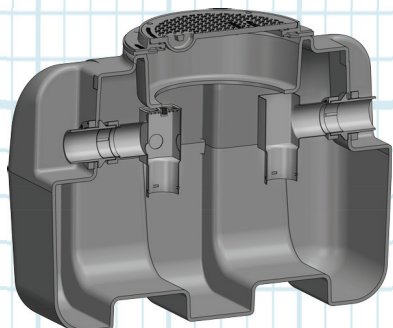
LIL-7-S

FLOW RATE (GPM)	7
LIQUID CAP. (Gal/Cu. Ft.)	5.8/.75
SOLIDS CAPACITY (Gal/Cu. Ft.)	3/.40



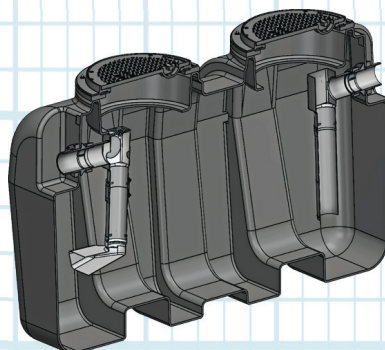
BIG-55-S

FLOW RATE (GPM)	50
LIQUID CAP. (Gal/Cu. Ft.)	55/7.19
SOLIDS CAPACITY (Gal/Cu. Ft.)	27/3.6



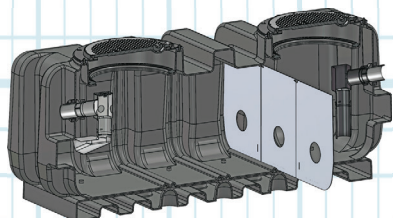
BIG-140-S

FLOW RATE (GPM)	75
LIQUID CAP. (Gal/Cu. Ft.)	140/18.30
SOLIDS CAPACITY (Gal/Cu. Ft.)	70/9.6



BIG-300-S

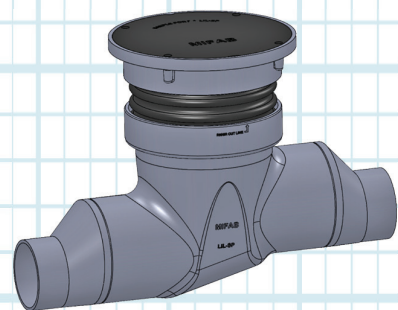
FLOW RATE (GPM)	100
LIQUID CAP. (Gal/Cu. Ft.)	300/39.21
SOLIDS CAPACITY (Gal/Cu. Ft.)	212/28.4



SUPER-500-S

FLOW RATE (GPM)	250
LIQUID CAP. (Gal/Cu. Ft.)	539/72
SOLIDS CAPACITY (Gal/Cu. Ft.)	548/73.3

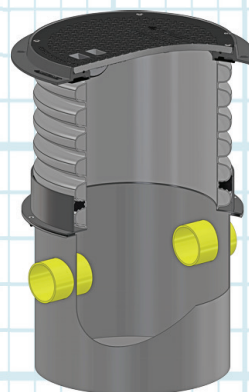
MIFAB®'S SAMPLING PORTS



SAMPOR

MIFAB® SAMPOR low profile HDPE molded sample port with a 4" inlet and outlet, 10,000 Lbs. load rated lid with 8" corrugated plastic pipe adjustability.

SAMPOR



BELOW GROUND SAMPLE PORTS

MIFAB® H.D.P.E. sample port with H-20, 20,000 lbs. load rated lid and corrugated ADS pipe extension to meet the finished grade. Complete with 20 7/8" diameter body and 4" no hub inlet and outlet connections.

SUPER-SP

SUPER-1500-99

SPECIAL PRECAUTIONS

1. HIGH TEMPERATURE KITCHEN WATER

If there is water entering the interceptor at over 150°F, a drain water tempering valve and approved backflow prevention assembly must be installed. Generally, State and local plumbing codes prohibit water above 150°F from being discharged into the sewer.

2. HYDROSTATIC SLABS (OR PRESSURE SLABS)

Interceptor must be enclosed in a water concrete vault when installed under a hydrostatic slab (slab designed to withstand upward lift - typically caused by hydrostatic pressure).

Installation not applicable for SUPER-2000

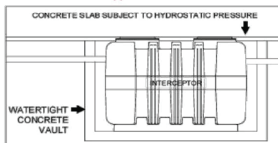


FIG. 2

3. MAXIMUM WATER LEVEL

The water level must not go above the height of Inlet / Outlet connection

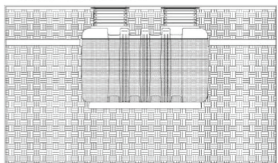


FIG. 3

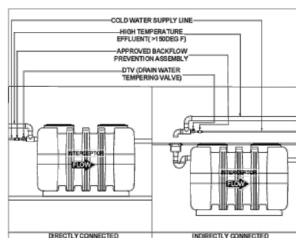


FIG. 1

4. HIGH WATER TABLE INSTALLATIONS

Interceptor and extension cannot withstand excessive water table height - see max water table height in figure 3. If possible, interceptor and extension should be installed in a water-tight concrete vault or backfilled with concrete or flowable fill (pour wet concrete and flowable backfill in stages to avoid crushing the interceptor). SUPER-MAX models buried in high water table are required to be installed with an anchor kit. High Risk Areas: Floodplains, tidal surge and high storm-water areas.

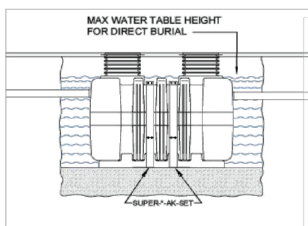


FIG. 4

INSTALLATIONS

BELOW GRADE / BACKFILL INSTALL:

1. Install the interceptor(s) as close as practical to the fixtures being served.
2. The excavation must be a minimum of 12" greater on all sides of the tank.
3. The depth of the excavation must be greater than 6" on the bottom of the interceptor.
4. Backfill while filling the interceptor with water at an equal rate until you reach the inlet/outlet. (Do not pack the backfill)
5. Fully install the double wall corrugated pipe and lid prior to backfilling.
6. Concrete or finishing material requirements are to be determined by the specifying engineer.
7. Encase the interceptor in well-packed ¾" rock, or sand. Do not compact backfill around interceptor.
8. To prevent float out; the Anchor kit is recommended for installations in high water table conditions. This is to be determined by the specifying engineer.
9. Fill the interceptor with 12" of water, then backfill 12" to match the water level. (Repeat operation until Filled) Properly backfill per project specs. (Note: Do not compact backfill around unit)

FINISHED CONCRETE SLAB

Slab must extend 18" minimum outside the footprint of the unit. Pedestrian traffic areas: 4" Thick reinforced concrete slab required. Vehicular traffic areas: Minimum 8" thick concrete slab with rebar is required.

Thickness of concrete around cover to be determined by specifying engineer. If traffic loading is required, the concrete slab dimensions shown are for guide purposes only. Concrete to be 38 day compressive strength to 4,000 PSI. Use #4 rebar (1/2") grade 60 steel per ASTM A615; connected with tie wire. Rebar to be 2-1/2" from edge of concrete and spaced in a 12" grid with 4" spacing around access openings.

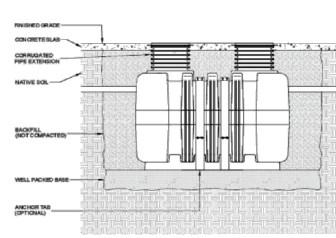


FIG. 12

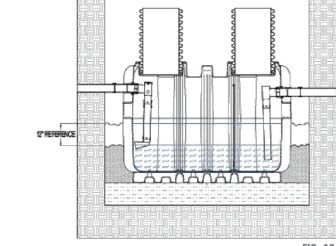


FIG. 13

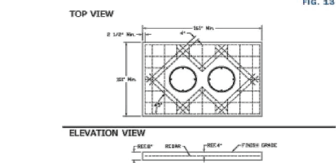


FIG. 14

CONCRETE SLAB DETAIL

SPECIAL PRECAUTIONS

5. INSTALLATION SUPPORT - ANCHOR KITS

Anchor kits are recommended for installation in high water table conditions to prevent floating. Necessity to be determined by Project Engineer. Hold down force is achieved by backfill weight acting on anchor plates. Bolt upper support brace together, then place over center channel. Bolt the anchor plate and upper support brace together using bolting hardware. Anchor plate may be bolted to concrete slab using provided holes.

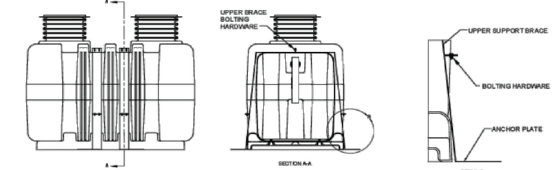


FIG. 5

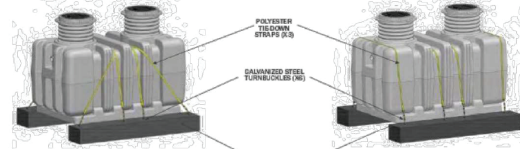
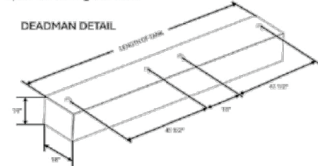


FIG. 6

SUPER-AK-SET-2 (SPECIFY SIZE)

The SUPER-AK-SET-2 is used when greater hold down strength is required. The polyester tie-down straps and turnbuckles are rated at 2,200 lbs. working load each.



- 4,000 PSI CONCRETE
- REINFORCED WITH #4 REBAR
- GALVANIZED TIE-DOWN LOOPS

2

INSTALLATIONS

EXTENSION COLLAR INSTALLATION

1. Set the SUPER MAX unit height to grade by installing the 24" diameter corrugated pipe onto the top opening(s) of the body, then insert the lid on top to measure and adjust the finished height from the top to grade. If less extension is needed, measure the required dimension and mark the extension. Then, cut to fit with a saw. The extension system is ADS pipe and is designed to be field cut as needed. If a longer extension is required to meet grade, new ADS pipe can be purchased and cut to length in order to equal grade. (ADS pipe part #24N12)
2. Install the Pipe Gasket between the bottom ribs. Then firmly press the 24" diameter pipe into the top opening(s) of the interceptor, it will bottom out at the pipe stop. The gasket is designed to fit tightly around the extension collar. Prying the gasket into place with a pry tool can save time and make this process easier. Watch the installation video at www.blk.com/ADS-gasket.
3. Insert the extension collar and pipe gasket onto the opening of the SUPER-MAX. Press firmly until the extension is seated inside the provided recessed channel. The SUPER-MAX is designed to fit tightly, and installation can be made easier by wetting the receiving area with mild soapy water. This will reduce the friction and allow the extension to press more easily into place.
4. Remove the cover from the lid assembly to see the pre-drilled screw holes. After the lid gasket with the self adhesive onto the underside of the collar. Place lid assembly onto the top of the corrugated pipe. Connect the lid assembly collar to the pipe with the 6 self tapping screws into the countersink holes. Replace lid back onto the lid assembly collar.
5. When installing the collar on concrete roads, an 8 inch-wide concrete ring beam with a 16" width guard circle around it should be poured between the collar and brick setting to make the surrounding compaction level and unmovable.
6. When installing the collar in a bituminous road, the collar must be installed after the road is paved. Roller compaction by construction equipment around the collar must be avoided. A hole that is slightly larger than the collar should be inserted before pouring the pavement. The reserved hole can help ensure the installation quality and prolong the usefulness of the installation.

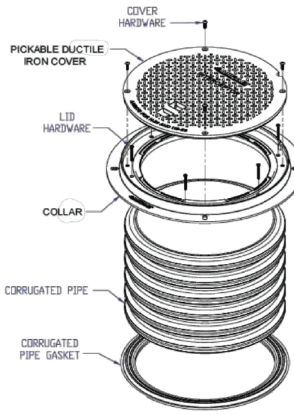


FIG. 15

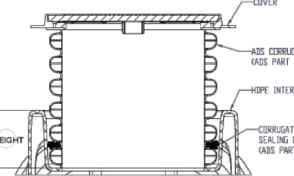
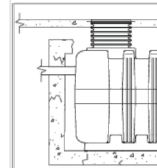


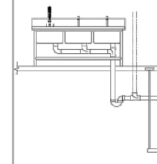
FIG. 16

APPLICATIONS



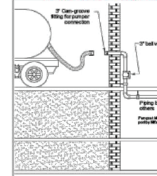
INSIDE CORRODED

Installation not applicable



RECESSED AND

Installation not applicable

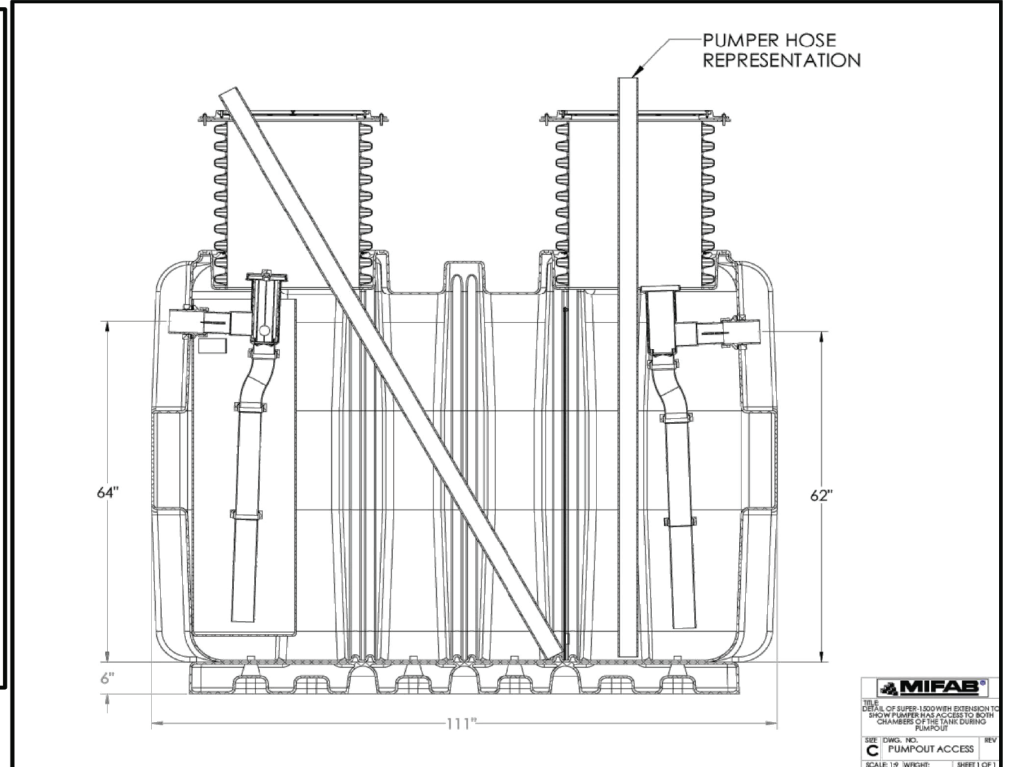
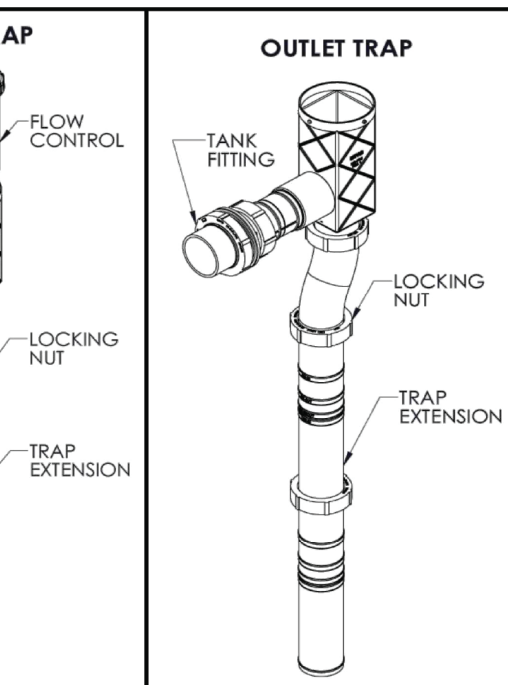


BASEMENT INSTALLATION

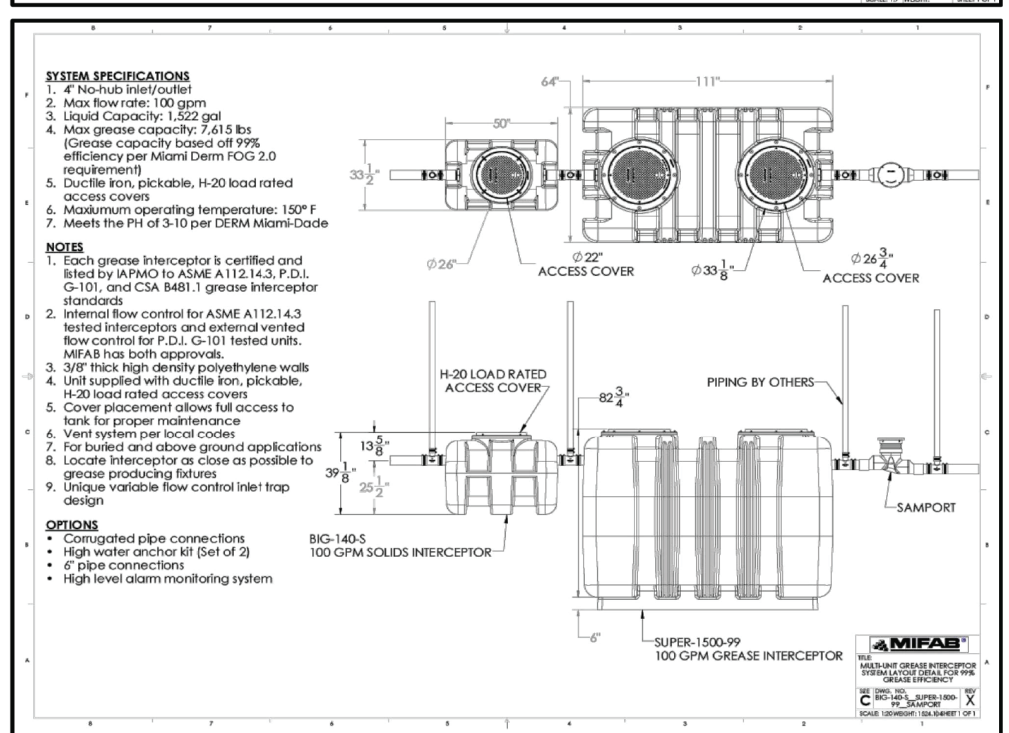
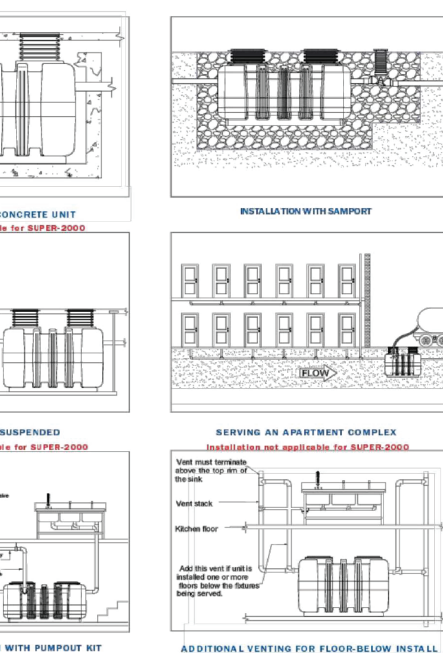
SUBMITTAL PACKAGE
EXAMPLE

Scan QR Code to visit
Miami-Dade DERM -
MIFAB® Interceptor
Product Offering





SPECIFIC DETAILS



TITLE:			
SUPER-1500-99			
SIZE	DWG. NO.	XXXXXX	REV
C			
SCALE:	WEIGHT:	SHEET 1 OF 1	

PROPRIETARY AND CONFIDENTIAL
THE INFORMATION CONTAINED
IN THIS DRAWING IS THE SOLE
PROPERTY OF MIFAB, INC. ANY
REPRODUCTION IN PART OR AS A
WHOLE WITHOUT THE WRITTEN
PERMISSION OF MIFAB, INC. IS
PROHIBITED.



MIFAB®

MIFAB® CATALOG FOR ANY APPLICATION



**MPB-2025-04-USA
SPECIFICATION
DRAINAGE
(LIT-067)**



**CLPB-2025-04
LIGHT COMMERCIAL
PRODUCTS
(LIT-048)**



**AD-2025-05-USA
ACCESS DOORS
(LIT-043)**



**BEECO-2025
BACKFLOW PREVENTERS,
AND ACCESSORIES
(LIT-071)**



**NH-2025
NO HUB COUPLINGS
(LIT-044)**



**TDPC-2025-04
POLYMER CONCRETE
TRENCH DRAINS
(LIT-076)**



**TD-2025-04
GRP AND STEEL
TRENCH DRAINS
(LIT-046)**



**TDSD-2025-04
SHOWER DRAINS
(LIT-077)**



**TDSS-2025-04
STAINLESS STEEL
TRENCH DRAINS
(LIT-072)**



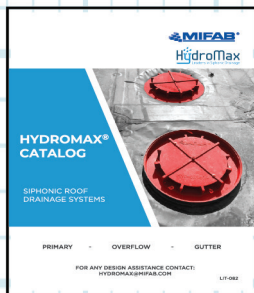
**TD-2025-CONCRETE
GRP AND POLYMER
CONCRETE PRODUCTS
(LIT-086)**



**C-PORT-2023
ROOFTOP RUBBER
PIPE SUPPORTS
(LIT-047)**



**DB-2025-05
DIALYSIS BOXES
(LIT-070)**



**HYDROMAX
SIPHONIC DRAINAGE
(LIT-082)**



**INT-2025
INTERCEPTORS & ACID
NEUTRALIZATION TANKS
(LIT-095)**



**TSP-2025
TRAP SEAL PRIMERS
(LIT-062)**



1321 W 119TH ST, CHICAGO, IL 60643
773-341-3030 | SALES@MIFAB.COM | WWW.MIFAB.COM

LIT-99-DERM