



DISTRIBUTED BY:  **MIFAB**®

A large, dynamic splash of water is the central visual element of the advertisement. It consists of two main upward-splashing jets of water that meet at the bottom, creating a wide, shallow basin. Numerous individual water droplets of various sizes are suspended in the air around the main splash, giving a sense of motion and freshness. The water is depicted with realistic shading and highlights, emphasizing its transparency and fluidity.

# **Engineered Water Works Solutions**

## **Your Complete Water Works Partner**

**High-performance valves, fittings, and hydrant accessories  
for municipal and industrial water systems**

**[WWW.MIFAB.COM/BEECO](http://WWW.MIFAB.COM/BEECO)**

**LIT-205**





DISTRIBUTED BY:  **MIFAB®**

# Reliable Water Works Solutions Backed by a Legacy of Quality

**BEECO® has served the water works industry for decades with durable, efficient valve and fitting solutions. Now, as a proud division of MIFAB®, we're setting new standards in product availability, customer support, and engineering innovation.**

**BEECO® is leading the way in commercial backflow preventers, pressure reducing valves, automatic control valves (ACVs), and essential accessories. Trusted for being the first to offer an approved testable backflow preventer, our products are known for being reliable, affordable, and easy to maintain.**

**Experience the BEECO® way—choose proven performance, industry leadership, and flow control solutions that stand the test of time.**

## **Certifications & Standards:**

- **NSF Certified**
- **AWWA Compliant**
- **Lead-Free Materials**
- **ISO Manufacturing**

## **Markets Served:**

- **Municipal Water Utilities**
- **Industrial & Plant Piping**
- **Fire Protection**
- **Water Distribution Contractors**



## **TABLE OF CONTENTS**

|                   |                                      |
|-------------------|--------------------------------------|
| <b>PAGE 1</b>     | <b>BACKFLOW PREVENTERS</b>           |
| <b>PAGE 2</b>     | <b>AUTOMATIC CONTROL VALVES</b>      |
| <b>PAGE 3</b>     | <b>PRESSURE REDUCING VALVES</b>      |
| <b>PAGE 4</b>     | <b>CHECK VALVES &amp; STRAINERS</b>  |
| <b>PAGE 5</b>     | <b>AIR RELEASE VALVES</b>            |
| <b>PAGE 6</b>     | <b>GATE VALVES</b>                   |
| <b>PAGE 7</b>     | <b>MIFAB® COUPLINGS</b>              |
| <b>PAGE 8-9</b>   | <b>MIFAB® TRENCH DRAIN SOLUTIONS</b> |
| <b>PAGE 10-11</b> | <b>MIFAB® GREASE INTERCEPTORS</b>    |

**[WWW.MIFAB.COM/BEECO](http://WWW.MIFAB.COM/BEECO)**



**RPDA (2 1/2"-10")** - Reduced Pressure Zone Backflow Preventer Detector Assembly



**Barracuda (2 1/2"-8")** - Double Check Backflow Preventer with Stainless Steel body



**Barracuda (2 1/2"-8")** - Reduced Pressure Zone Backflow Preventer with Stainless Steel body.



**DCDA (2 1/2"-10")** - Double Check Backflow Preventer Detector Assembly



**FDC (1/2 "-2")** - Double Check Backflow Preventer



**FDC (2 1/2"-10")** - Double Check Backflow Preventer



**FRP (1/2"-2")** - Reduced Pressure Zone Backflow Preventer



**FRP (2 1/2"-10")** - Reduced Pressure Zone Backflow Preventer



**DC** - In Line Dual Check Valve

# BACKFLOW PREVENTERS

The BEECO® Series of Backflow Preventers are engineered to safeguard potable water systems by effectively blocking hazardous pollutants and contaminants caused by backpressure or backsiphonage. Trusted across the industry for their performance and reliability, these assemblies are ideal for plumbing, irrigation, municipal waterworks, and fire protection systems — delivering critical protection where it matters most.



\*USC APPROVED ARE: 1/2"- 8" DOUBLE CHECK BACKFLOW PREVENTERS (STAINLESS STEEL BODY 2 1/2"- 8") 2 1/2"- 8" REDUCED PRESSURE ZONE BACKFLOW PREVENTERS (STAINLESS STEEL BODY)

Design and dimensions are subject to modification.

BEECO, Inc. 1321 West 119th Street, Chicago, Illinois 60643-5109, USA

[WWW.MIFAB.COM/BEECO](http://WWW.MIFAB.COM/BEECO)

Toll Free (800) 465-2736, Fax: (773) 341-3049  
sales@mifab.com Canada Toll Free (800)387-3880

# AUTOMATIC CONTROL VALVES



BEECO® Automatic Control Valves are engineered from rugged ductile iron and feature a 100% electrostatically applied fusion-bonded epoxy coating for superior corrosion resistance and long-term durability. Designed to meet the demands of today's most challenging systems, these valves are available in Full Port sizes from 1-1/2" to 24" (-HF) and Reduced Port sizes from 2" to 32". A variety of end connections are offered, including FNPT Threaded (-IPS) and ANSI Class 150 or 300 Flanged (-HP), ensuring compatibility and flexibility for a wide range of applications.



**ACV-HF-T-PR** - Automatic Control Valve - Pressure Reducing

**ACV** - Automatic Control Valve - Reduced Port



**ACV - HF** - Automatic Control Valve - High Flow

**PG** - Pressure Gauges



*"Our valves are designed for the contractor, modularly designed, have easy access to the cover valves and parts are easily replaced without breaking internal components during the process."*  
— BEECO Product Overview

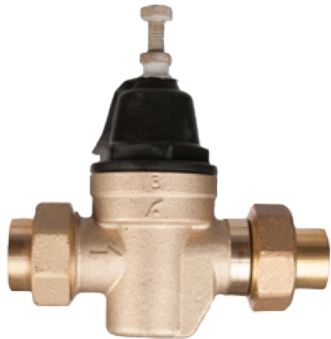
Every BEECO® Automatic Control Valve is hydrostatically tested to ensure peak performance and has standard features not found in other Automatic Control Valves





# PRESSURE REDUCING VALVES

Engineered for performance, built for the jobsite — BEECO® Pressure Reducing Valves deliver reliable pressure control by efficiently managing high inlet pressure and regulating it to meet precise system requirements. Trusted by engineers for their precision and by contractors for their ease of installation and long-term durability, BEECO® valves are the smart choice for protecting systems and ensuring peak performance.



**PRV-C (1/2"-1")** - Water Pressure Reducing Valves, Composite Bonnet

**PRV-C (1 1/4"-2")** - Water Pressure Reducing Valves, Bronze Bonnet



**JK** - PRV Jumper kit

**PRV-F (3/4"-1")** - Water Pressure Reducing Valves (25AUB Replacement)



Design and dimensions are subject to modification.

BEECO, Inc. 1321 West 119th Street, Chicago, Illinois 60643-5109, USA

[WWW.MIFAB.COM/BEECO](http://WWW.MIFAB.COM/BEECO)

Toll Free (800) 465-2736, Fax: (773) 341-3049  
sales@mifab.com Canada Toll Free (800)387-3880

# CHECK VALVES



Engineered for precision and durability, BEECO® Check Valves provide reliable one-way flow control to protect system integrity and prevent costly backflow issues. Built for commercial, industrial, and municipal applications, these valves ensure long-term system performance with minimal maintenance — making them a trusted choice for both engineers and contractors.



**BCV** - Ball Check Valve



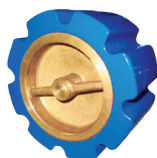
**CV** - Silent Check Valve



**CV-FLG-RD** - Swing Check Valve



**CV-FLG-RD-WS** - Swing Check Valve w/ Lever & Weight



**WSCV** - Water Silent Check Valve Class 125



**SCV** - Globe Style Class 125 FIG Silent Check Valve

# STRAINERS

BEECO® Strainers are designed to defend plumbing and mechanical systems from harmful debris by capturing particles before they cause clogs or equipment damage. Rugged and easy to install, these strainers help extend system life, reduce maintenance downtime, and support efficient operation in the most demanding environments.



**STR (1/2"-2")** - Bronze Strainer (F.I.P. x F.I.P. and SWT. x SWT.)



**STR-PC (2"-12")** - Ductile Iron Powder Coated Flanged Strainer



# AIR RELEASE VALVES



**AV-P-A** - Air Release Valve



**AV-P-K** - Air and Vacuum Valve



**AV-P-K-A** - Combination Air Release  
and Vacuum Valve

BEECO® Air Release Valves are engineered to efficiently eliminate trapped air from pressurized piping systems — ensuring smooth flow, accurate system performance, and protection against pressure surges. Designed for reliability in waterworks, irrigation, and industrial applications, these valves help prevent costly damage caused by air pockets and vacuum conditions. Built with precision and durability in mind, BEECO® Air Release Valves are easy to install, low maintenance, and trusted by professionals who demand performance in every detail.

*"The BEECO Plastic Air Valves provide dependable service at a competitive price, without the weight and corrosion concerns associated with metal valves."*

-William Dozier, CEO, Pioneer Supply Moore, OK

Design and dimensions are subject to modification.

BEECO, Inc. 1321 West 119th Street, Chicago, Illinois 60643-5109, USA

**WWW.MIFAB.COM/BEECO**

Toll Free (800) 465-2736, Fax: (773) 341-3049  
sales@mifab.com Canada Toll Free (800)387-3880

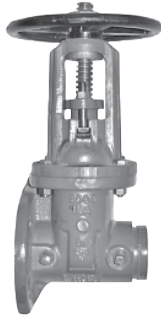
**5**



# GATE VALVES



**GV-FXG-OSY** - Flanged by Grooved OS & Y Gate Valves



**GV-FXF-NRS** - Flanged by Flanged NRS Gate Valves



**GV-FXG-UL/FM** - Flanged by Grooved UL/FM OS & Y Gate Valves



**GV-FXF-UL/FM** - Flanged by Flanged UL/FM OS & Y Gate Valves



**GV-GXG-UL/FM** - Grooved by Grooved UL/FM OS & Y Gate Valves



**GV-FXF-OSY** - Flanged by Flanged OS & Y Gate Valves



**GV-GXG-NRS** - Grooved by Grooved NRS Gate Valves



**GV-GXG-OSY** - Grooved by Grooved OS & Y Gate Valves



**GV-FXG-NRS** - Flanged By Grooved NRS Gate Valves



**GV-FXF-NRS-MJ** - Mechanical Joint By Mechanical Joint Gate Valves





# MIFAB® Couplings



Flexible Couplings



Transition Shielded Couplings



Quick Hub



Repair Shielded Couplings



Regular Duty No Hub Couplings



Heavy Duty Shielded Couplings

MIFAB's comprehensive line of couplings—including MI-FLEX, Quick Hub, flexible, transition shielded, quick hub, repair shielded, heavy-duty shielded, and regular-duty no-hub couplings—offers reliable, code-compliant solutions for connecting cast iron, PVC, and other piping systems. Available in sizes ranging from 1 1/2" to 15", these couplings meet ASTM C1277 and CISPI 310 standards, ensuring fast, secure installations for both commercial and industrial applications.



*"MIFAB Products are by far the best, easy to install and so well thought out. No other manufacturer makes their products so simple to use. MIFAB is the only way to go."*

-Joe Boyle, Boyle Plumbing & Contracting, Inc.

Design and dimensions are subject to modification.

BEECO, Inc. 1321 West 119th Street, Chicago, Illinois 60643-5109, USA

**WWW.MIFAB.COM/BEECO**

Toll Free (800) 465-2736, Fax: (773) 341-3049  
sales@mifab.com Canada Toll Free (800) 387-3880

**7**

# TRENCH DRAIN SOLUTIONS

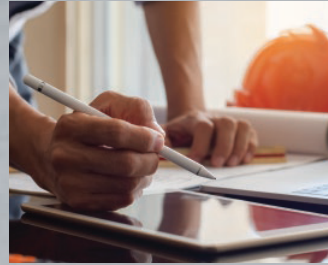


# MIFAB®



## Up to Building Code

Grates are rated using the industry standard rating system of EN 1433 and Ansi A112.21.1M. Available in Load Classes A-F to provide the exact solution for your application.



## ADA Compliant

MIFAB's inclusive trench drain offering has several options for ADA compliant and heel proof grates. Available in different styles and materials.



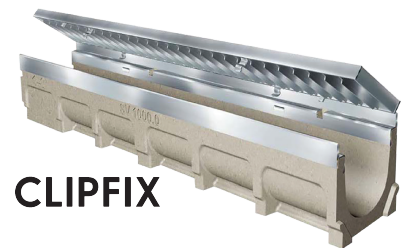
## In House Engineering Team

MIFAB's experienced engineering team is available to help make your trench experience seamless. They offer support from choosing the optimum trench system, Run layouts, Revit or BIM models and overall advice.

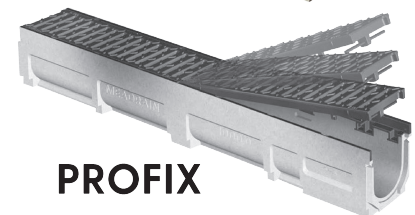


## "ClipFix" and "ProFix" Grate System

Innovative CLIPFIX grate locking mechanism for plastic, ductile iron, galvanized and stainless steel grates (up to and including Load Class E). Innovative PROFIX grate locking mechanism for Load Class F ductile iron grates.



CLIPFIX



PROFIX

# 8

Design and dimensions are subject to modification.

BEECO, Inc. 1321 West 119th Street, Chicago, Illinois 60643-5109, USA

[WWW.MIFAB.COM/BEECO](http://WWW.MIFAB.COM/BEECO)

Toll Free (800) 465-2736, Fax: (773) 341-3049  
sales@mifab.com Canada Toll Free (800) 387-3880



# High Quality Materials

## Polymer Concrete

Polymer concrete channels are composed of mineral aggregates and resin to create a durable and high quality channel with grates up to load class F. Available in three internal widths: 4", 8", 12" and in three rail options: galvanized steel, stainless steel and ductile iron.

## Glass-Fiber Reinforced Polyester

GRP drainage channels use SMC (sheet molded compound) manufacturing technology to offer the best price and performance for projects with grates up to load class F. Available in three internal widths: 4", 8", and 12", and in four rail options: no edge, galvanized steel, stainless steel, and ductile iron edge rails. Ductile iron edge rails only 4" and 8".

## Shallow Depth Channels

Shallow depth channels are frequently used and recommended in applications where there are depth restrictions due to site conditions (es. Utilities).

CUSTOMIZABLE TRENCH DRAIN  
SYSTEMS IN FIBER GLASS,  
STEEL, AND STAINLESS STEEL



ACCESS DOORS  
LIT-043



STAINLESS STEEL  
INDUSTRIAL DRAINS  
TDSS-2025



**For Our Complete range of products  
please visit [www.mifab.com](http://www.mifab.com)  
Customer Service: (800) 465-2736**



Design and dimensions are subject to modification.

BEECO, Inc. 1321 West 119th Street, Chicago, Illinois 60643-5109, USA

**[WWW.MIFAB.COM/BEECO](http://WWW.MIFAB.COM/BEECO)**

Toll Free (800) 465-2736, Fax: (773) 341-3049  
sales@mifab.com Canada Toll Free (800)387-3880

# MIFAB® Grease Interceptors

MIFAB® grease interceptors are engineered to efficiently separate and contain fats, oils, and grease (FOG) from wastewater, helping protect drainage systems and maintain code compliance.

Available in coated steel, stainless steel, and high-density polyethylene (HDPE), these interceptors are built for durability, corrosion resistance, and long service life. Suitable for both above- and below-grade installations, each unit is designed with accessible covers and cleanout ports to simplify maintenance. With a wide range of sizes and flow capacities, MIFAB grease interceptors provide reliable performance in a variety of commercial and industrial applications.



## Lil Max



7 - 50 Gallons per Minute (GPM)  
LIL-7, LIL-10, LIL-15, LIL-20, LIL-25,  
LIL-25-LP, LIL-35, LIL-50  
Certified to ASME, PDI, CSA  
Finger Latch pull tabs for easy access

INDOOR, ABOVE GROUND OR BURIED

(Low Profile 25 GPM)

## BIG MAX

50, 75, & 100 GPM  
55 - 300 Liquid Gallon Capacity  
493 - 2,016 lbs Grease Capacity

OUTDOOR, ABOVE GROUND OR BURIED

Standard H-20 Traffic Rated Lids



## SUPERMAX®

100 - 250 GPM  
500 - 2000 Liquid Gallon Capacity  
Grease Capacities from 3,492 - 13,102 lbs  
Hydromechanical & Gravity Options

OUTDOOR, BURIED

Standard H-20 Traffic Rated Lids

# 10

Design and dimensions are subject to modification.

BEECO, Inc. 1321 West 119th Street, Chicago, Illinois 60643-5109, USA

[WWW.MIFAB.COM/BEECO](http://WWW.MIFAB.COM/BEECO)

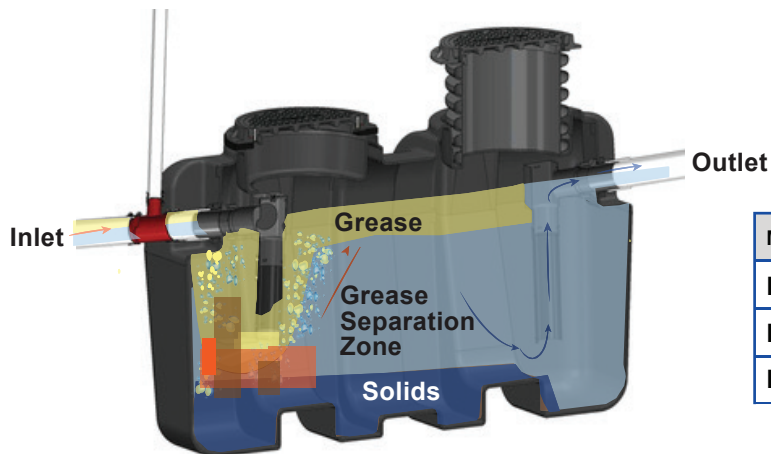
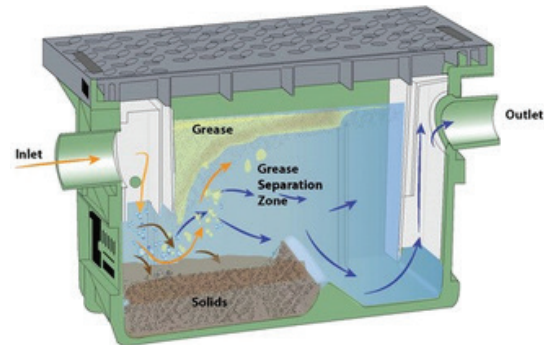
Toll Free (800) 465-2736, Fax: (773) 341-3049  
sales@mifab.com Canada Toll Free (800)387-3880





| MODEL     | GPM | GREASE CAPACITY | DIMS (INCHES) |
|-----------|-----|-----------------|---------------|
| LIL-7     | 7   | 37              | 22X16X13      |
| LIL-10    | 10  | 42              | 25X18X14      |
| LIL-15    | 15  | 50              | 25X18X17.5    |
| LIL-20    | 20  | 73              | 32X21X15      |
| LIL-25    | 25  | 79              | 32X21X19      |
| LIL-25-LP | 25  | 74              | 35X26X13      |
| LIL-35    | 35  | 86              | 35X26X23      |
| LIL-50    | 50  | 109             | 35X26X25      |

**Lil Max** 

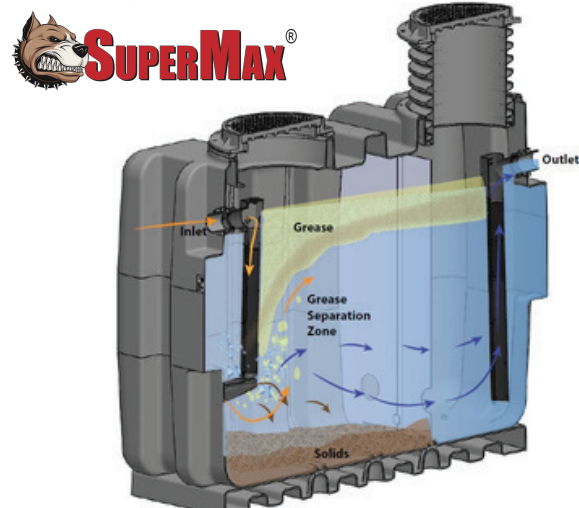


**BIG MAX** 

| MODEL    | GPM | GREASE CAPACITY | DIMS (INCHES) |
|----------|-----|-----------------|---------------|
| BIG-500  | 50  | 493             | 37X28X33      |
| BIG-750  | 75  | 838             | 50X34X39      |
| BIG-1150 | 100 | 2,016           | 83X34X52      |

#### HYDROMECHANICAL & GRAVITY OPTIONS

| MODEL      | GPM | GREASE CAPACITY | DIMS (INCHES) |
|------------|-----|-----------------|---------------|
| SUPER-500  | 100 | 4,059           | 111X64X45     |
| SUPER-750  | 100 | 5,002           | 111X64X60     |
| SUPER-1000 | 100 | 6,577           | 111X64X70     |
| SUPER-1250 | 100 | 8,117           | 111X64X81     |
| SUPER-1300 | 100 | 8,501           | 111X64X81     |
| SUPER-1500 | 100 | 9,862           | 111X64X89     |
| SUPER-2000 | 100 | 13,102          | 111X64X111    |



HIGH FLOW OPTIONS AVAILABLE UP TO 950 GPM WITH 8" CONNECTION





DISTRIBUTED BY:  **MIFAB**®

A large, dynamic splash of water is the central visual element of the page. It originates from the bottom center and spreads upwards and outwards, with numerous droplets and bubbles captured in mid-air. The water is rendered in various shades of blue, giving it a three-dimensional appearance.

# **Engineered Water Works Solutions**

## **Your Complete Water Works Partner**

**High-performance valves, fittings, and hydrant accessories  
for municipal and industrial water systems**

**[WWW.MIFAB.COM/BEECO](http://WWW.MIFAB.COM/BEECO)**

**LIT-205**