

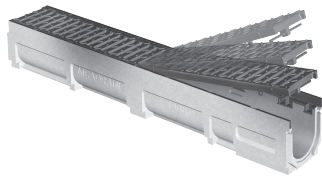
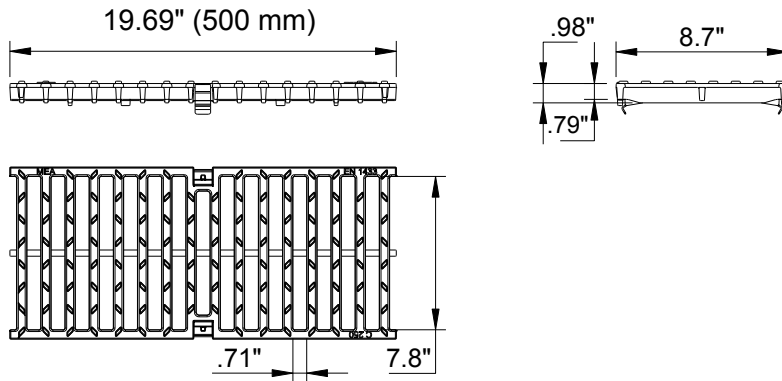
Location: _____



T200-PGF-4-PX

Ductile Iron Slotted Grate
to suit 8" clear opening channels

Specification: T200-PGF-4-PX ductile iron grates are independently certified to meet Load Class F tested in accordance with EN 1433 (202,320 lbs. (900kN)). The grate length is 19.69" (.50 m). The grates utilize the patented "Profix" grate locking mechanism. The system (channel and grate) provides longitudinal shift protection.



PROFIX ADVANTAGE

The MEA polymer concrete channels with ductile iron grates have been designed for our universal PROFIX grate locking mechanism. The system (channel and grate) provides longitudinal shift protection.

Grate Free Area
T200-PGF-4-PX
48.30 Sq. in./ft.



GRATE MODEL NUMBER	LENGTH
T200-PGF-4-PX	19.69" (500 mm)

LOAD CLASS F



EN 1433 -
202,320 LBS.,
900kN, 1160 PSI

CALIFORNIA PROPOSITION 65 WARNING. This product contains chemicals known to the State of California to cause cancer and birth defects or other reproductive harm.

Job Name: _____

Page No: _____

Section No: _____

Contractor: _____

Schedule No: _____

Purchase Order No: _____