

Location: _____



T1800-PB-13 with Galvanized Steel Integral Rail

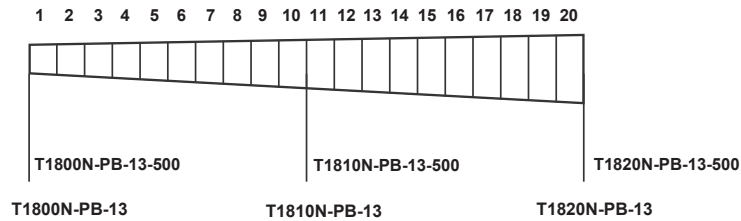
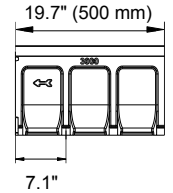
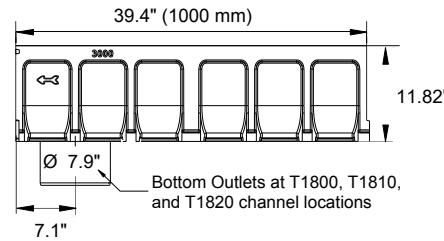
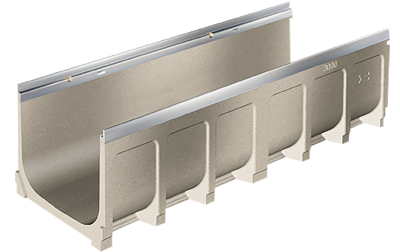
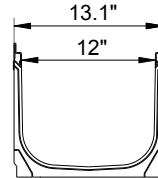


Specification:

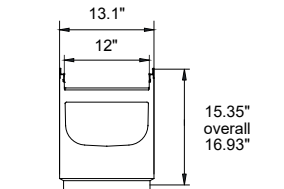
MIFAB®'s T1800-PB-13 series channels shall be 39.4" (1000 mm) long with a 12" (300 mm) internal width. Interconnecting channels sections are made from high strength Polymer Concrete and available in sloping and non-sloping (neutral) channels. Each channel comes with a standard 4 mm galvanized steel edge rail which is mechanically embedded in the channel.

Installation devices, plastic end cap/outlet cap, and catch basins are available accessories. System comes complete with 8" preformed bottom outlets at the T1800, T1810, and T1820 channel locations. Grates (separate Specification Sheets) are available in in Load Class A-E in a variety of materials. Grates utilize the patented "Clipfix" locking mechanism.

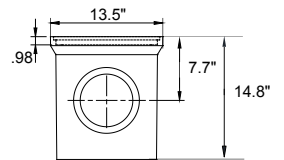
CHANNEL MODEL #	BODY TYPE Sloped - .5% Neutral - 0%	INVERT BODY DEPTH		OVERALL BODY DEPTH		MAXIMUM FLOW RATE GPM	WEIGHT (LESS GRATE) Lbs.
		E1 (Min.)	E2 (Max.)	E1 (Min.)	E2 (Max.)		
T1800N-PB-13	Neutral	10.4"	10.04"	11.82"	11.82"	633	76.28
T1800N-PB-13-BO8	Neutral	10.4"	10.04"	11.82"	11.82"	633	76.28
T1800N-PB-13-500	Neutral	10.4"	10.04"	11.82"	11.82"	633	38.14
T1801-PB-13	Sloped	10.4"	10.24"	11.82"	12.01"	688	82.19
T1802-PB-13	Sloped	10.24"	10.44"	12.01"	12.21"	721	82.73
T1803-PB-13	Sloped	10.44"	10.63"	12.21"	12.41"	756	83.26
T1804-PB-13	Sloped	10.63"	10.83"	12.41"	12.60"	793	83.80
T1805-PB-13	Sloped	10.83"	11.03"	12.60"	12.80"	829	84.34
T1806-PB-13	Sloped	11.03"	11.23"	12.80"	13.00"	867	84.88
T1807-PB-13	Sloped	11.23"	11.42"	13.00"	13.19"	905	85.42
T1808-PB-13	Sloped	11.42"	11.62"	13.19"	13.39"	945	85.95
T1809-PB-13	Sloped	11.62"	11.82"	13.39"	13.59"	986	86.49
T1810-PB-13	Sloped	11.82"	12.01"	13.59"	13.78"	1048	87.03
T1810-PB-13-BO8	Sloped	11.82"	12.01"	13.59"	13.78"	1048	87.03
T1810N-PB-13	Neutral	12.01"	12.01"	13.78"	13.78"	1048	85.16
T1810N-PB-13-BO8	Neutral	12.01"	12.01"	13.78"	13.78"	1048	85.16
T1810N-PB-13-500	Neutral	12.01"	12.01"	13.78"	13.78"	1048	49.23
T1811-PB-13	Sloped	12.01"	12.21"	13.78"	13.98"	1091	90.63
T1812-PB-13	Sloped	12.21"	12.41"	13.98"	14.18"	1135	91.17
T1813-PB-13	Sloped	12.41"	12.60"	14.18"	14.38"	1179	91.71
T1814-PB-13	Sloped	12.60"	12.80"	14.38"	14.57"	1225	92.25
T1815-PB-13	Sloped	12.80"	13.00"	14.57"	14.77"	1273	92.78
T1816-PB-3	Sloped	13.00"	13.19"	14.77"	14.97"	1320	93.32
T1817-PB-13	Sloped	13.19"	13.39"	14.97"	15.16"	1371	93.86
T1818-PB-3	Sloped	13.39"	13.59"	15.16"	15.36"	1422	94.40
T1819-PB-13	Sloped	13.59"	13.78"	15.36"	15.56"	1472	94.94
T1820-PB-13	Sloped	13.78"	13.98"	15.56"	15.75"	1566	95.47
T1820-PB-13-BO8	Sloped	13.78"	13.98"	15.56"	15.75"	1566	95.47
T1820N-PB-13	Neutral	13.98"	13.98"	15.75"	15.75"	1566	91.60
T1820N-PB-13-BO8	Neutral	13.98"	13.98"	15.75"	15.75"	1566	91.60
T1820N-PB-13-500	Neutral	13.98"	13.98"	15.75"	15.75"	1566	52.78



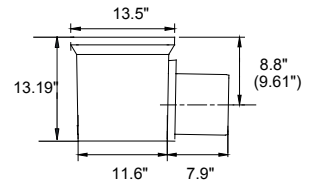
T1800-CB820-13
Galvanized Steel
Edge Catch Basin
Sediment bucket
included
**CATCH BASIN
TOP ASSEMBLY**



**CATCH BASIN
OPTIONAL
EXTENSION**



**8" OUTLET CATCH
BASIN BASE
(6" OUTLET ALSO
AVAILABLE)**



CLIPFIX ADVANTAGE

The MEA polymer concrete channels have been designed for our universal CLIPFIX grate locking mechanism. The system (channel and grate) provides longitudinal shift protection.

Job Name: _____	Page No: _____
Section No: _____	Contractor: _____
Schedule No: _____	Purchase Order No: _____

Revision Date: 2024-03-05

CALIFORNIA PROPOSITION 65 WARNING. This product contains chemicals known to the State of California to cause cancer and birth defects or other reproductive harm.