

Location:



T1800-CB1220-13, T1800-CB1220-3,
and T1800-CB1220-4 Catch Basin

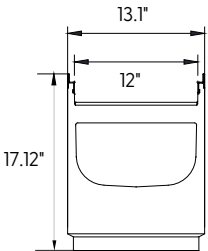


Specification:

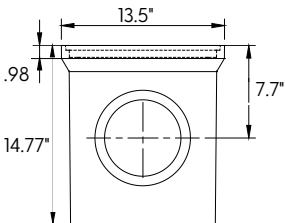
MIFAB®'s T1800-CB1220 Catch Basin shall be 13.5" (343 mm) long with a 8" (200 mm) internal width. It is available with a 6" or 8" outlet. The catch basin is made from High Strength Polymer Concrete. Each channel comes with a Galvanized edge rail or Stainless steel edge rail. The catch basins achieve Load Class A-E depending on the grate utilized. T1800-CB1220-4 is only Class F.



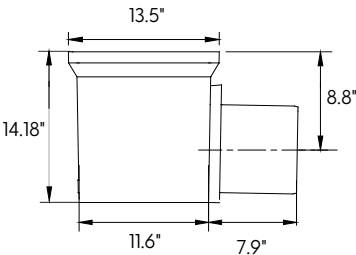
CATCH BASIN TOP
ASSEMBLY



CATCH BASIN
OPTIONAL EXTENSION



12" OUTLET CATCH
BASIN BASE
(6" OUTLET ALSO
AVAILABLE)



STAINLESS STEEL INTEGRAL RAILS	DESCRIPTION
T1800-CB1220-3-SO6	6" OUTLET
T1800-CB1220-3-SO8	8" OUTLET

GALVANIZED STEEL INTEGRAL RAILS	DESCRIPTION
T800-CB1220-13-SO6	6" OUTLET
T1800-CB1220-13-SO8	8" OUTLET

DUCTILE IRON INTEGRAL RAILS	DESCRIPTION
T1800-CB1220-4-SO6	6" OUTLET
T1800-CB1220-4-SO8	8" OUTLET

Job Name: _____
Section No: _____
Schedule No: _____

Page No: _____
Contractor: _____
Purchase Order No: _____

Revision Date: 2024-03-05

CALIFORNIA PROPOSITION 65 WARNING. This product contains chemicals known to the State of California to cause cancer and birth defects or other reproductive harm.