

Location:



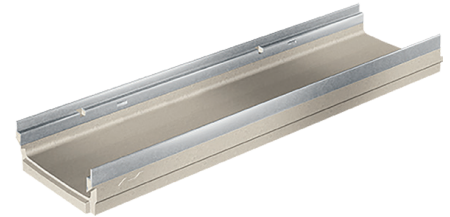
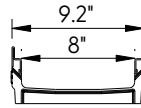
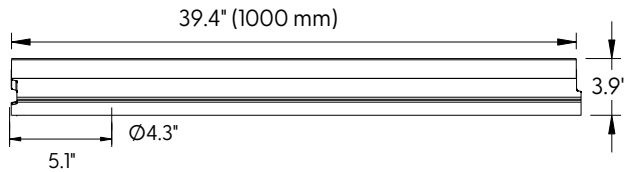
T1760-PB-3 with Stainless Steel Integral Rail



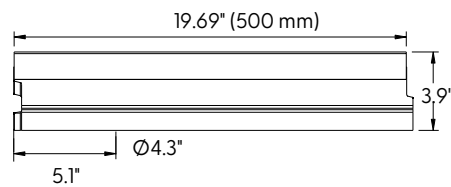
Specification:

MIFAB®'s T1760-PB-3 series channels shall be 39.4" (1000 mm) long with a 8" (200 mm) internal width and shallow bottom. Interconnecting channel sections are made from high strength Polymer Concrete and available in non-sloping (neutral) channels. Each channel comes with a standard stainless steel edge rail which is mechanically embedded in the channel.

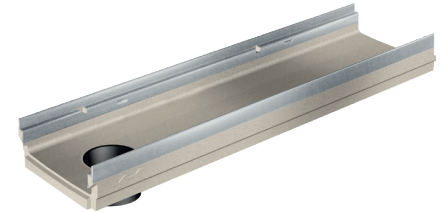
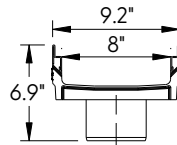
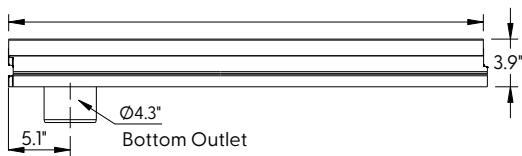
System is available with 4" preformed bottom outlet. End caps and catch basins are available accessories. Grates (separate specification sheets) are available in Load Class A-E in a variety of material. Grates utilize the patented "Clipfix" locking mechanism.



T1760N-PB-3



39.4" (1000 mm)



T1760N-PB-3-BO4

CHANNEL MODEL NUMBER	FLOW GPM	WEIGHT (LBS.)
T1760N-PB-3	240	43.85
T1760N-PB-3-500	240	22.05
T1760N-PB-3-BO4	240	41.45

MATERIAL CHARACTERISTICS

Salt proof	Yes
Frost proof	Yes
Dilute acid and alkali resistant	Yes
Water absorption	Below 0.05%
Flexural Strength	4,000 psi
Compressive Strength	14,000 psi



CLIPFIX ADVANTAGE

The MEA polymer concrete channels have been designed for our universal CLIPFIX grate locking mechanism. The system (channel and grate) provides longitudinal shift protection.

Job Name: _____	Page No: _____
Section No: _____	Contractor: _____
Schedule No: _____	Purchase Order No: _____

Revision Date: 2024-03-05

CALIFORNIA PROPOSITION 65 WARNING. This product contains chemicals known to the State of California to cause cancer and birth defects or other reproductive harm.

MIFAB reserves the right to make changes in material and design without formal notice and obligation. USA: 1-800-465-2736 www.mifab.com CAN: 1-800-387-3880