

Location: _____



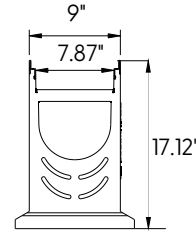
T1700-CB820-13, T1700-CB820-3, and T1700-CB820-4 Catch Basin

Specification:

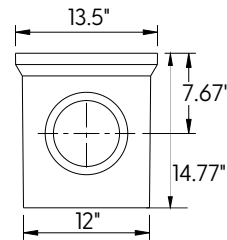
MIFAB®'s T1700-CB820 Catch Basin shall be 13.5" (343 mm) long with a 8" (200 mm) internal width. It is available with a 6" or 8" outlet. A sediment bucket is included with every basin. The catch basin is made from High Strength Polymer Concrete. Each channel comes with a Galvanized edge rail or Stainless steel edge rail. The catch basins achieve Load Class A-E depending on the grate utilized. T1700-CB820-4 is only Class F.



CATCH BASIN TOP ASSEMBLY

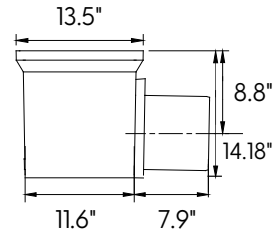


CATCH BASIN OPTIONAL EXTENSION



8" OUTLET CATCH BASIN BASE (6" OUTLET ALSO AVAILABLE)

Sediment bucket included



STAINLESS STEEL INTEGRAL RAILS	DESCRIPTION
T1700-CB820-3-SO6	6" OUTLET
T1700-CB820-3-SO8	8" OUTLET

GALVANIZED STEEL INTEGRAL RAILS	DESCRIPTION
T1700-CB820-13-SO6	6" OUTLET
T1700-CB820-13-SO8	8" OUTLET

DUCTILE IRON INTEGRAL RAILS	DESCRIPTION
T1700-CB820-4-SO6	6" OUTLET
T1700-CB820-4-SO8	8" OUTLET

Job Name: _____	Page No: _____
Section No: _____	Contractor: _____
Schedule No: _____	Purchase Order No: _____

Revision Date: 2022-10-12

CALIFORNIA PROPOSITION 65 WARNING. This product contains chemicals known to the State of California to cause cancer and birth defects or other reproductive harm.

MIFAB reserves the right to make changes in material and design without formal notice and obligation. USA: 1-800-465-2736 www.mifab.com CAN: 1-800-387-3880