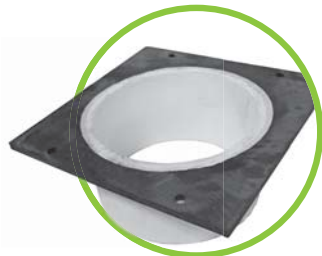
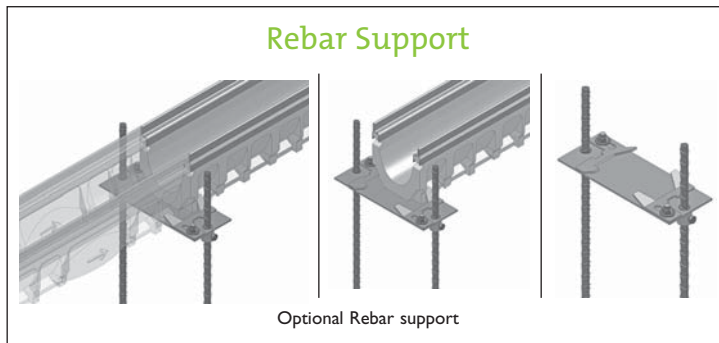


**Accessories**


Prefabricated no hub bottom outlet


**Rebar Support**

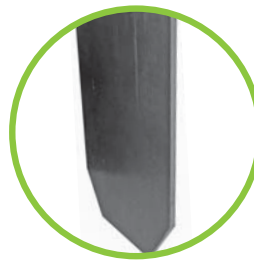
Optional Rebar support



FILCOTEN catch basin



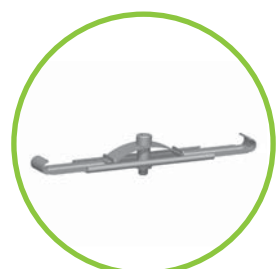
Plastic Sediment bucket for catch basins to fit all widths



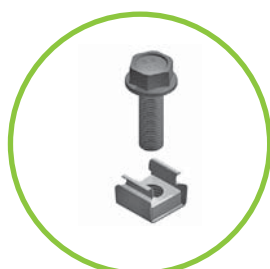
Front / End Cap for all widths



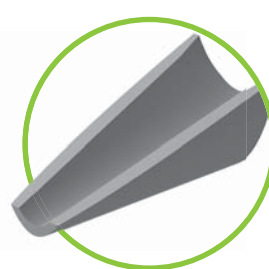
End cap with outlet for all widths



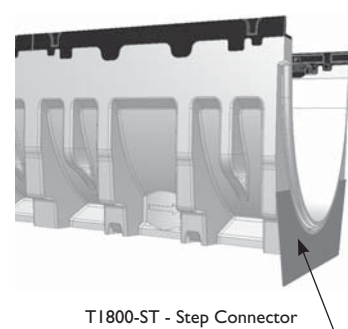
Anti-vandalism locking device for all grates (except perforated), ADA compliant. Two pieces required per grate



Galvanized Bolts / Nuts for the T1800 Load Class E Ductile Iron Grates



Step connector for connecting bodies with different heights (for T1500 and T1700)



T1800-ST - Step Connector

**TYPICAL TRENCH DRAIN SIZING CONSIDERATIONS**

In order to size a trench drain system (length and width), the following information is required:

1. Length of trench drain run (feet or meters)
2. Length and width of the surface area draining into the trench drain (feet or meters)
3. Surface area type - concrete, pavement, asphalt, etc.
4. Rainfall intensity (in/hr or mm/hr) of the area where the trench drain will be installed.
5. Slope of the ground along the trench drain (%)
6. Perpendicular approach slopes to the trench drain (%)
7. Location of and number of outlets along the trench drain run
8. Any slab depth height restrictions

Please contact MIFAB's Engineering Department at [sales@mifab.com](mailto:sales@mifab.com) for help to design your next trench drain project.

