

Location:



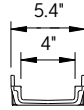
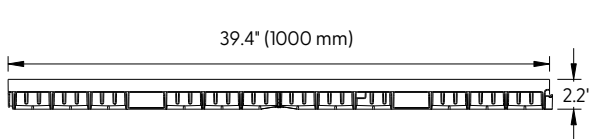
T1460-PB with No Edge Rail



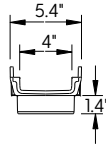
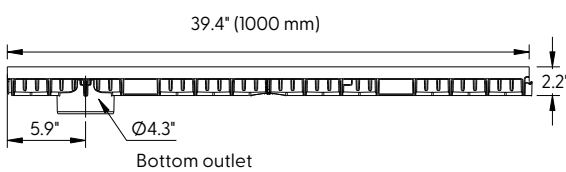
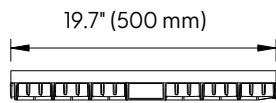
Specification:

MIFAB®'s T1460-PB series shallow channels shall be 39.4" (1000 mm) long with a 4" (100 mm) internal width and shallow bottom. Channels are made from high strength Glass Fiber Reinforced Polyester (GRP) with no edge rail.

System is available with 4" preformed bottom outlet. End caps and catch basins are available accessories. Grates (separate specification sheets) are available in Load Class A-C in a variety of materials. Grates utilize the patented "Clipfix" locking mechanism.

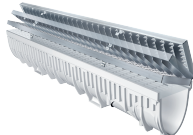


T1460N-PB



T1460N-PB-BO4
with 4" bottom outlet

CHANNEL MODEL NUMBER	FLOW GPM	WEIGHT (LBS.)
T1460N-PB	55	4.12
T1460N-PB-500	55	2.05
T1460N-PB-BO4	55	4.12



CLIPFIX ADVANTAGE

The MEA Glass Fiber Reinforced Polyester (GRP) channels have been designed for our universal CLIPFIX grate locking mechanism. The system (channel and grate) provides longitudinal shift protection.

Job Name: _____	Page No: _____
Section No: _____	Contractor: _____
Schedule No: _____	Purchase Order No: _____

Revision Date: 2024-03-05

CALIFORNIA PROPOSITION 65 WARNING. This product contains chemicals known to the State of California to cause cancer and birth defects or other reproductive harm.

MIFAB reserves the right to make changes in material and design without formal notice and obligation. USA: 1-800-465-2736 www.mifab.com CAN: 1-800-387-3880