

Location: \_\_\_\_\_

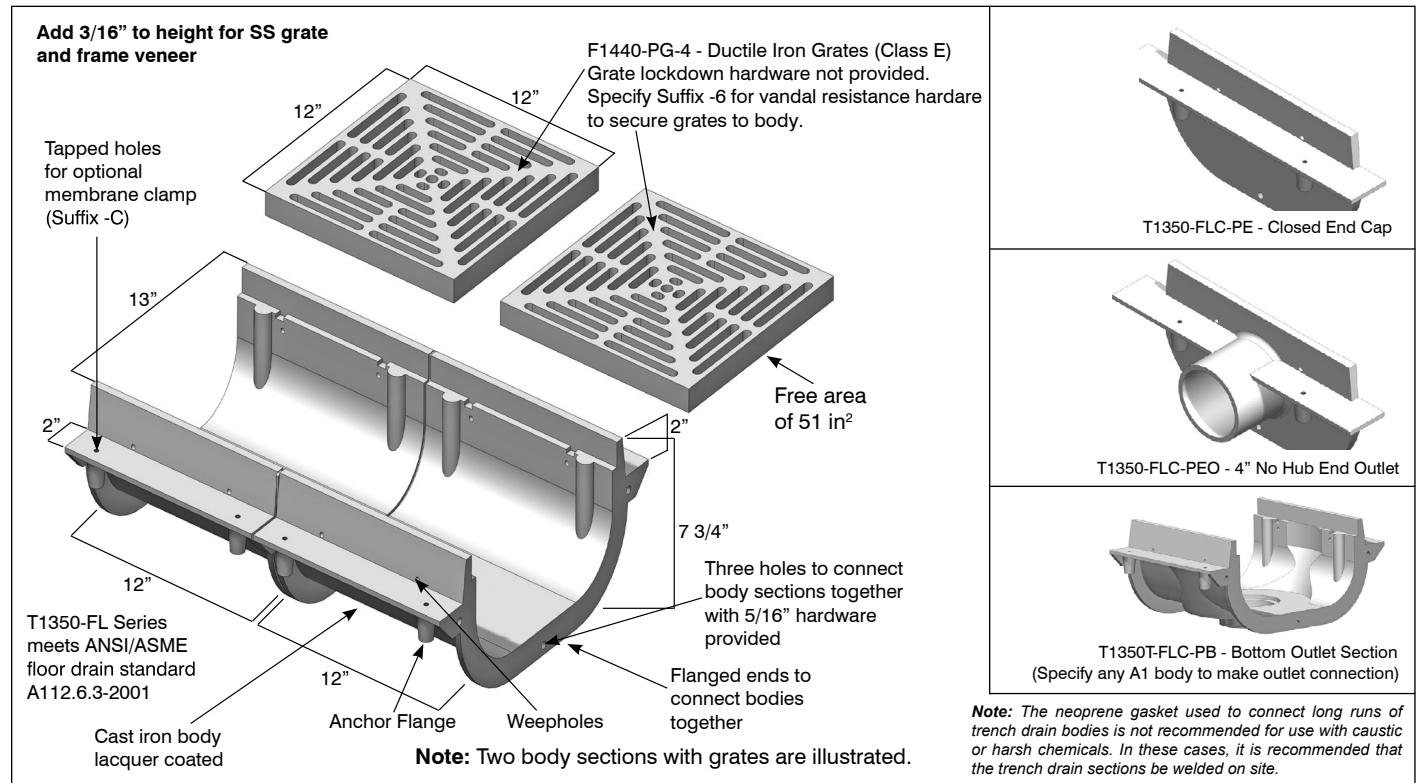


**T1350-FL**

## 12" WIDE, NEUTRAL SLOPED, CAST IRON BODY AND GRATE SYSTEM

**Specification:** MIFAB® Series T1350-FL, 12" wide, 7 3/4" deep, 12" long, non sloped modular trench drain with lacquered cast iron body sections. Each body has a 2" wide anchor flange cast into each side recessed 2" down from the top. Bodies have a radiused bottom and flanged ends to connect to each other with a neoprene rubber gasket in between. End outlets are available in 2", 3", 4" or 6" no hub outlet connections (specify outlet connection size) and bottom outlets are available in 2", 3", 4" or 6" no hub outlet connections (specify outlet connection size). 12" long, Class E, H-20 ductile iron grates are provided as standard (Suffix -4). End caps and catch basins are also available.

**Function:** Used in vehicle washdown areas, loading and parking areas, at the bottom of parking garages, warehouses and other locations that have heavy vehicle traffic. An infinite number of body sections can be assembled together to serve any requirement. Can also be used in small sections as an area drain.



**Note:** Specify Specify total length of trench drain required in 12" long sections. Section "A" is standard with a bottom outlet (specify bottom outlet connection type and number and location of outlets required). Section "B" does not have a bottom outlet. Any number of Sections "A" and "B" can be bolted together to produce any length required. Stainless steel fabricated body trench drains are custom made to any design required. All trench drain orders require a factory drawing approved by the customer prior to production.

Suffix	Description
-5	Sediment bucket (per outlet section)
-6	Vandal proof grate (per grate) (H-1072B) (lockdown grate to body)
-8	Backwater valve (per piece)(BV1254)
-11	All acid resistant epoxy coated (per 12" section)
-12	Galvanized grate
-13	All galvanized (per 12" section)
-20	Dome bottom outlet strainer (per piece)

-95	Client logo (-3 SS veneer only)
-C	Membrane clamp (per foot)
P	Push on bottom outlet (2", 3" or 4")
-PSA	Pennsylvania Steel Act Compliant Product
S	End outlet (No Hub only, 4")
T	Threaded bottom outlet (2", 3" or 4")
X	Inside caulk bottom outlet (2" or 3")

CALIFORNIA PROPOSITION 65 WARNING. This product contains chemicals known to the State of California to cause cancer and birth defects or other reproductive harm.

Job Name: \_\_\_\_\_

Page No: \_\_\_\_\_

Section No: \_\_\_\_\_

Contractor: \_\_\_\_\_

Schedule No: \_\_\_\_\_

Purchase Order No: \_\_\_\_\_



**STEP 1:** Determine the total length required. Once total length is known, divide by 12" (each cast iron body section with grate is 12" long) to determine the total number of cast iron body sections required. Specify the total number of T1350-FLC-PB body sections required.

**STEP 2:** Determine how many outlets and connection types are required. Are they bottom outlet, (most common) or end outlet? If bottom outlet, specify the total number of T1350T-FLC-PB body sections required. Reduce the total number of body sections required in STEP 1 by the total number of bottom outlet sections required. Remember to add the A3-PG sealing gasket and appropriate A1 body for each bottom outlet required.

Remember to add one piece of the T1350-FLC-GASK for every body section and also for every end piece. Remember to add one piece of the HS-17 hardware pack with every body section required.

**STEP 3:** Specify the total number of end pieces required (Part No: T1350-FLC-PE).

**STEP 4:** Determine the type and number of grates required.

The number of grates required will equal the total number of body sections required.

#### ORDER EXAMPLE:

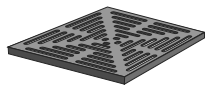
Ten feet of T1354-FL-4-10SEC trench is required by the customer with one bottom outlet (4", no hub connection) and standard ductile iron grates. Number of body sections required is ten. One of these body sections will be the outlet body section.

#### PARTS REQUIRED:

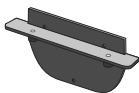
T1350-FLC-PB (T1350-FL-GASK incl.).....	9 pieces
T1350T-FLC-PB(T1350-FL-GASK incl.).....	1 piece
A1-4NH-7.....	1 piece
A3-PG.....	1 piece
HS-17 .....	11 pieces
T1350-FLC-PE .....	2 pieces
F1440-PG-4.....	10 pieces

Enter the order into the system by part number and quantity for each.

**F1440-PG-4**  
(Standard grate)



**T1350-FLC-PE**  
(End cap)



**T1350-FL-GASK**  
(Gasket)



**A3-PG**



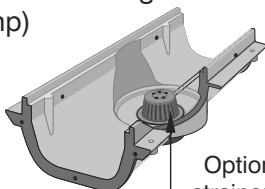
**T1354-FLC-PEO**  
No hub end outlet



**HS-17**

#### **T1350T-FLC-PB**

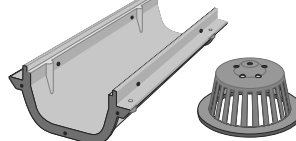
(Cast iron body with bottom outlet and anchor flange with membrane clamp)



Optional Dome strainer (A1-MB)

#### **T1350-FLC-PB**

(Cast iron body with no bottom outlet and anchor flange with membrane clamp)



**A1-MB** Sediment bucket (Suffix -5)