

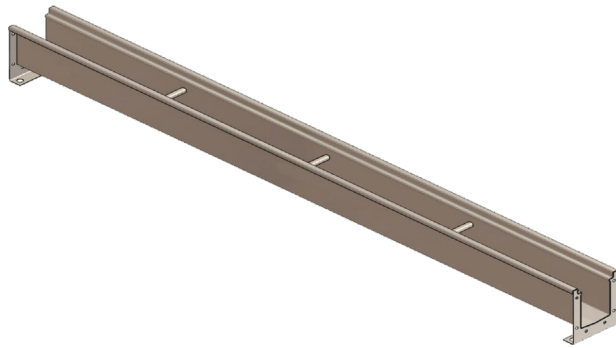
Location: _____



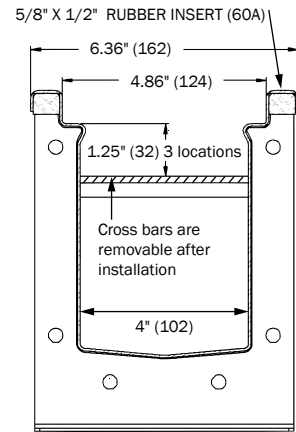
T1330

**4" Internal Width, Presloped,
Fabricated Steel Channels**

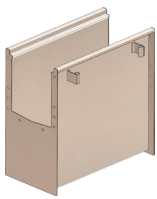
Specification: MIFAB® Series T1330, 4" internal width, 16 gauge fabricated, powder epoxy coated steel presloped trench drain (1%) with optional grates (see page 27 of TD-2023). Channels are available in one and two meter lengths, have flanged ends to connect to each other with a neoprene gasket. Bottom and end outlets are available in 3" or 4" no hub outlet connections. Also available with optional anchor flange (Suffix -FL).



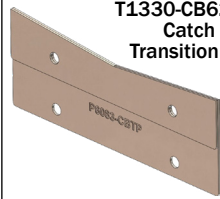
Made in USA.
Meets the Buy
America Act.



T1330-CB620
Catch Basin
Channels 1, 3
and 5 to connect
to Catch Basin.



T1330-CB620-TP
Catch Basin
Transition Plate



SCAN FOR
SPEC. SHEETS

T1360-HDW - Universal neoprene gasket for between channels, end caps and end outlets with hardware included with every channel, end cap / end outlet ordered

CHANNEL#	LENGTH	Shallow Invert	Deep Invert
T1331	78.74" (2m)	4"	4.78"
T1331N	78.74" (2m)	4.78"	4.78"
T1331N-BO3	78.74" (2m) (w/3" BO)	4.78"	4.78"
T1331N-BO4	78.74" (2m) (w/4" BO)	4.78"	4.78"
T1331N-1M	39.37" (1m)	4.78"	4.78"
T1332	78.74"(2m)	4.78"	5.56"
T1333	78.74" (2m)	5.56"	6.34"
T1333N	78.74" (2m)	6.34"	6.34"
T1333N-BO3	78.74" (2m) (w/3" BO)	6.34"	6.34"
T1333N-BO4	78.74" (2m) (w/4" BO)	6.34"	6.34"
T1333N-1M	39.37" (1m)	6.34"	6.34"
T1334	78.74" (2m)	6.34"	7.12"
T1335	78.74" (2m)	7.12"	7.9"
T1335N	78.74" (2m)	7.9"	7.9"
T1335N-BO3	78.74" (2m) (w/3" BO)	7.9"	7.9"
T1335N-BO4	78.74" (2m) (w/4" BO)	7.9"	7.9"
T1335N-1M	39.37" (1m)	7.9"	7.9"

Suffix	ACCESSORIES
-6	Vandal Proof grates (center lockdown)
-7MG	MI-GARD Trap Seal Protection device (3" or 4")
-20	Bottom outlet strainer
-45	45° Degree fabricated body (T1330-45)
-90	90° Degree fabricated body (T1330-90)
-CB	Catch Basin (Part # P6060-CB620) (1/2 meter long, w/ sediment bucket, transition plates and hardware kit)
-CF	Cross fabricated body
-FL	Anchor (waterproofing) flange
-FLC	Membrane Clamp (includes anchor flange)
MI-FLEX-300	3" Flexible rubber coupling to connect 3" No Hub vertical and horizontal channel outlets to drainage pipe
MI-FLEX-400	4" Flexible rubber coupling to connect 4" No Hub vertical and horizontal channel outlets to drainage pipe
-PEC	Closed End Cap (T1330-PEC)
-PEO	3" or 4" No Hub End Outlet (T1330-PEO3, T1330-PEO4)
-TEE	Tee fabricated body

Note: The neoprene gasket used to connect long runs of trench drain bodies is not recommended for use with caustic or harsh chemicals. In these cases, it is recommended that the trench drain sections be welded on site.

NOTE: Flow rate information per channel section is available on the www.mifab.com website

NOTE: Custom widths, depths, slopes and profiles available upon request. Contact MIFAB®.

CALIFORNIA PROPOSITION 65 WARNING. This product contains chemicals known to the State of California to cause cancer and birth defects or other reproductive harm.

Job Name: _____ Page No: _____
 Section No: _____ Contractor: _____
 Schedule No: _____ Purchase Order No: _____