

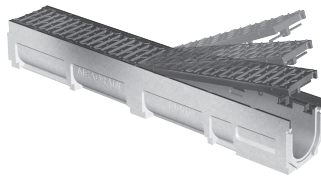
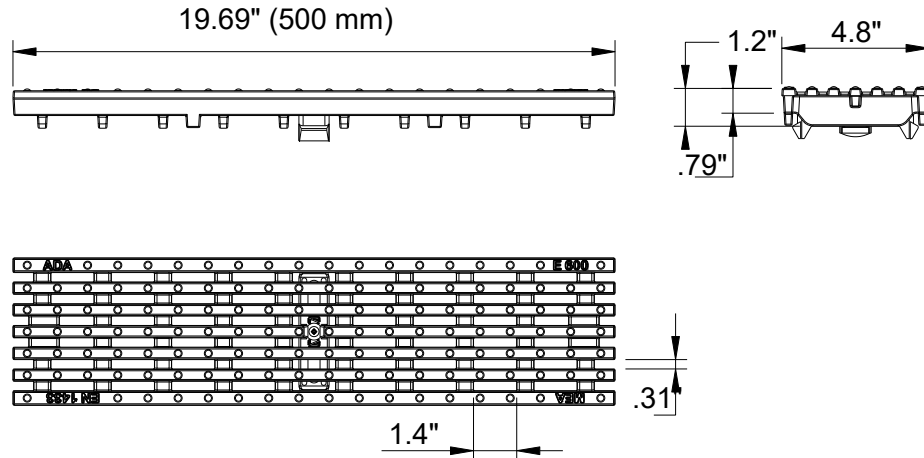
Location: _____



T100-PGF-4-ADA-PX-13

Galvanized Ductile Iron Longitudinal Slotted Grate to suit 4" clear opening channels

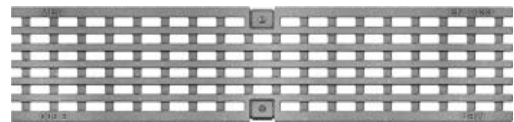
Specification: T100-PGF-4-ADA-PX-13 galvanized ductile iron longitudinal slotted grates are independently certified to meet Load Class F tested in accordance with EN 1433 (202,320 lbs. (900kN). The grate length is 19.69" (.50 m). The grates utilize the patented "Profix" grate locking mechanism. The system (channel and grate) provides longitudinal shift protection.







PROFIX ADVANTAGE

The MEA polymer concrete channels with ductile iron grates have been designed for our universal PROFIX grate locking mechanism. The system (channel and grate) provides longitudinal shift protection.

Grate Free Area
T100-PGE-4-ADA-PX-13
18.07 Sq. in./ft.



GRATE MODEL NUMBER	LENGTH
T100-PGF-4-ADA-PX-13	19.69" (500 mm)

LOAD CLASS F		Compliance	
 BUILDING SUCCES	 EN 1433 202,320 LBS., 900kN, 4,177 PSI	 ADA	 HEELPROOF

CALIFORNIA PROPOSITION 65 WARNING. This product contains chemicals known to the State of California to cause cancer and birth defects or other reproductive harm.

Job Name: _____
Section No: _____
Schedule No: _____

Page No: _____
Contractor: _____
Purchase Order No: _____