

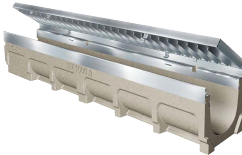
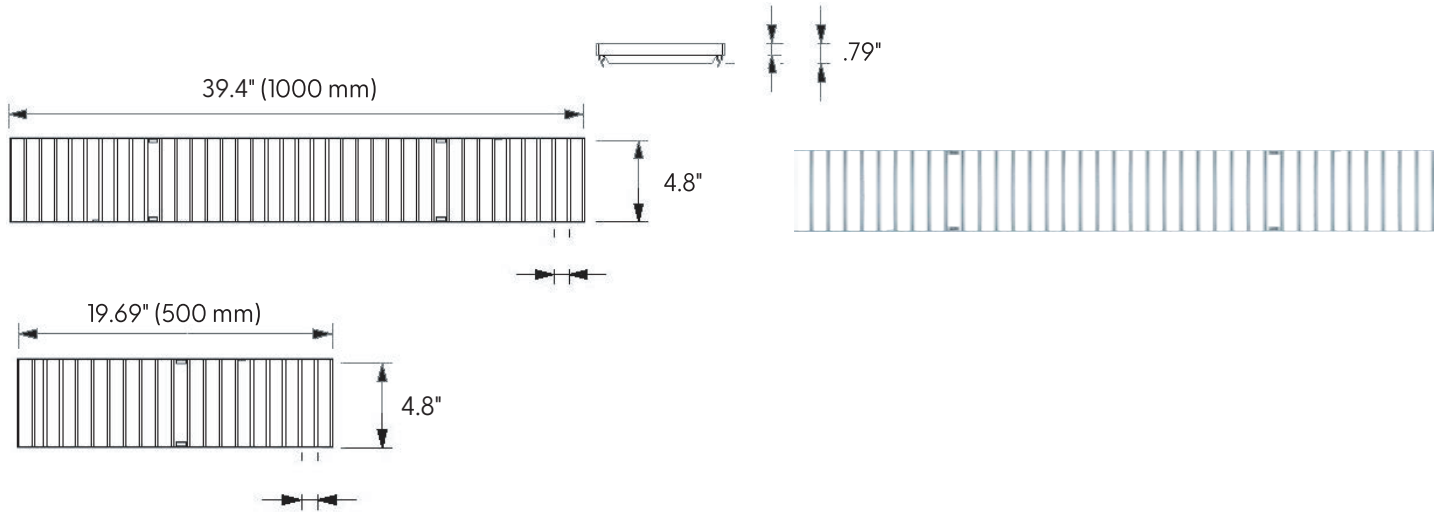
Location: \_\_\_\_\_



## Stainless Steel Bar Grate to suit 4" clear opening channels



**Specification:** T100-PGE-3-SBG stainless steel bar grates are independently certified to meet Load Class E tested in accordance with EN 1433 (134,800 lbs (600kN)). The grate length is 39.4" (1 m). The grates utilize the patented "Clipfix" grate locking mechanism. The system (channel and grate) provides longitudinal shift protection. The grate has a free area of 43.41 in<sup>2</sup>/linear ft.



### CLIPFIX ADVANTAGE

The MEA polymer concrete and GRP channels are designed for our universal CLIPFIX grate locking mechanism. The system (channel and grate) provides longitudinal shift protection.

### LOAD CLASS E



EN 1433  
134,800 LBS.,  
600kN, 2,785 PSI

GRATE MODEL NUMBER	LENGTH
T100-PGE-3-SBG	39.4" (1000 mm)
T100-PGE-3-SBG-500	19.7" (500 mm)

Job Name: \_\_\_\_\_

Page No: \_\_\_\_\_

Section No: \_\_\_\_\_

Contractor: \_\_\_\_\_

Schedule No: \_\_\_\_\_

Purchase Order No: \_\_\_\_\_

Revision Date: 08/24/2022

CALIFORNIA PROPOSITION 65 WARNING. This product contains chemicals known to the State of California to cause cancer and birth defects or other reproductive harm.

MIFAB reserves the right to make changes in material and design without formal notice and obligation.

USA: 1-800-465-2736 [www.mifab.com](http://www.mifab.com) CAN: 1-800-387-3880