

INTERCEPTOR - ABOVE GRADE

The SUPERMAX® gravity interceptor may be installed as a stand alone unit, or in any number of different combinations to properly service the application. Different combinations are shown in Appendix 7, on page 23.

1) **PLACEMENT** - All SUPERMAX® interceptors can be installed above grade. The HDPE ribbed construction allows these interceptors to be placed on an engineered approved, level surface. Under normal use, SUPERMAX® interceptors will require no additional support to maintain full functionality. Seismic ratings and needs should be determined by a design engineer and based on established codes. The interceptor should be placed in a visible and easily accessible area for maintenance, cleaning, and inspection. Allowing space for the service provider to properly clean the vessel is a key consideration.

2) **SET IN PLACE** - MIFAB® interceptors should be set in place by the installer. The installer should ensure the pad/site is level and load rate compliant. The interceptor should be plumbed as instructed below in accordance with all required codes.

3) **FLOW CONTROLS** - Each MIFAB® SUPERMAX® interceptor is supplied with a factory sized internal flow control for each size unit available. The flow control is an important component to ensure the proper operation and efficiency of the unit. Installation is accomplished using properly sized "flexible" couplings for above ground indoor installation (or Extra Heavy Duty No Hub shielded couplings for any outdoor installation).

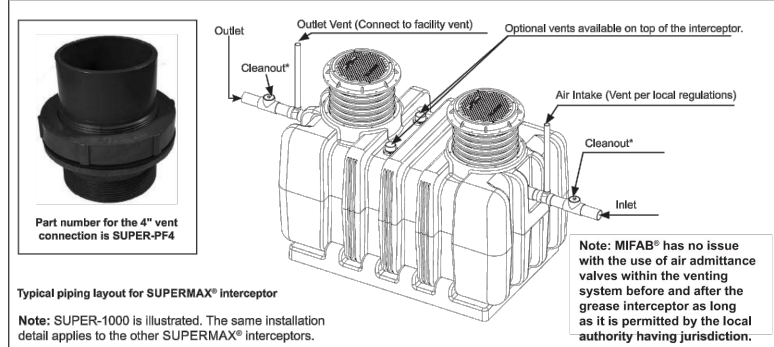
NOTE: For the SUPER-500 model interceptors are supplied with stainless steel calibrated orifice plate (internal flow control). An external, vented, flow control fitting is required to be installed before the inlet of the grease interceptor to meet the P.D.I. G-101 for the SUPER-500 model.

4) **INLET/OUTLET PIPING** - The inlet and outlet piping connections require no hub pipe couplings (see MIFAB's M-HUB Series of no hub couplings). Keep outlet piping as straight as possible. MIFAB® recommends installation of SUPERMAX® interceptors and solids interceptors in accordance with all applicable laws, regulations and codes. Use only "sweep" connections. Do not install a "P" trap on the outlet connection of system as the system already has an internal gas trap.

5) **MULTIPLE UNITS** - When combining more than one grease interceptor or solids interceptor in series or parallel, always provide a 1 inch fall or change in grade between units.

6) **PIPE SUPPORTS** - Pipe supports should be located every 16 inches on all vertical and horizontal piping. Allow for expansion as per local and national code.

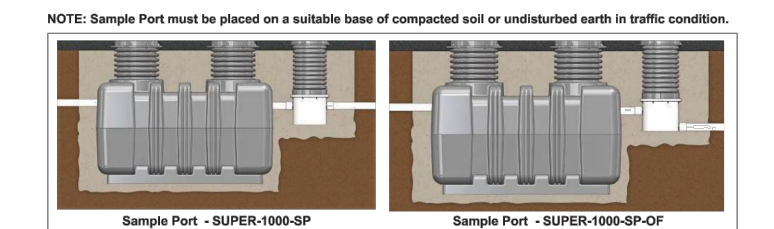
7) **VENTING** - Venting of the SUPERMAX® gravity interceptor is recommended by MIFAB® and required for indoor installations. Vent the SUPERMAX® grease interceptor on the inlet side. It is also recommended to vent the outlet side of the SUPERMAX® grease interceptor right after the outlet. An outlet vent or approved air admittance valve of at least 1/2 the diameter of the interceptor's outlet connection must be installed as close as possible to the SUPERMAX® outlet to prevent possible siphonage problems. The vent on the outlet piping is to be installed in accordance with all applicable laws, regulations and codes. Failure to provide a vent for the interceptor voids MIFAB's warranty for the system.



INTERCEPTOR - BELOW GRADE

5) SAMPLE PORT INSTALLATION -

MIFAB's patented extension system uses standard ADS 18N12 pipe. If less than 24 inches is needed, cut to the desired height. Measure and mark the required height on the extension collar then cut to the needed height with a Sawz All (see page 12 of this manual). If more than 24 inches is required, additional collar length can be acquired from a local supply house. Simply purchase the required amount of 18 inch diameter ADS pipe and insert into the SUPERMAX®. The maximum recommended depth of the collars should be no more than 72".



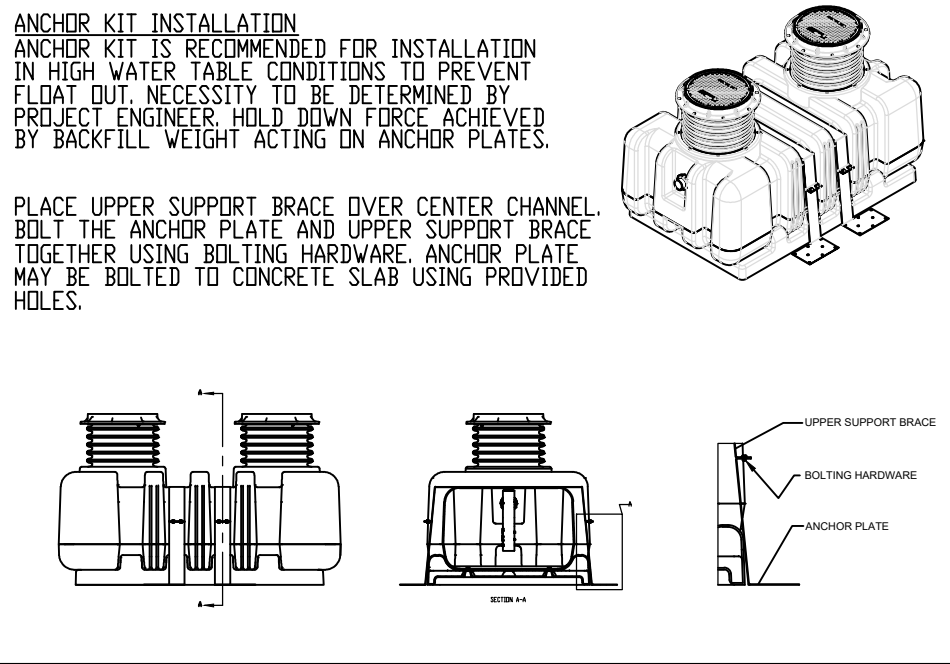
6) RECOMMENDED EXCAVATION, BACKFILLING, AND FINISHING

- Install the interceptor(s) as close as practical to the fixtures being served.
- The excavation must be a minimum of 18" greater on all sides of the tank.
- The depth of the excavation must be greater than 12" on the bottom of the interceptor.
- Fill the interceptor with water prior to backfilling in water to prevent the interceptor from floating.
- Fully install the double wall corrugated pipe and lid prior to backfilling.
- Concrete or finishing material requirements are to be determined by the specifying engineer.
- Encase the interceptor in well-packed 3/4" rock, or sand. Do not compact backfill around interceptor.
- To prevent float out, the Anchor Kit is recommended for installations in high water table conditions. This is to be determined by the specifying engineer.

7) SUPERMAX® CONFIGURATIONS/TOOLS/CONNECTIONS

Following are two typical SUPERMAX® typical interceptor layouts, with materials and recommended tools required for installation.

| Typical piping layout for SUPERMAX® Interceptor | | Typical piping layout for SUPERMAX® Interceptor | |
|---|------------|---|-----------------|
| <p>Outlet Vent (Connect to facility vent)</p> <p>Cleanout</p> <p>Outlet</p> <p>Air Intake (Vent per local regulations)</p> <p>Inlet</p> <p>Cleanout</p> | | <p>Outlet Vent (Connect to facility vent)</p> <p>Cleanout</p> <p>Outlet</p> <p>Air Intake (Vent per local regulations)</p> <p>Inlet</p> <p>Cleanout</p> | |
| Needed Connections | | Recommended Tools | |
| Dust Cleanouts 4" | 2 | Screw Driver | Pliers |
| Union 4" w/ 2" outlet | 1 | Torque Wrench | Tap Measure |
| Extra Heavy No Hub Couplings 4" | 4 | Hand Saw | Leveling Device |
| Extra Heavy No Hub Couplings 2" | 1 | PVC Cutter | Marker |
| 4" PVC Pipe | Per Design | PVC Cement | Shovel |
| 2" PVC Pipe | Per Design | PVC Primer | |



INTERCEPTOR - BELOW GRADE

The SUPERMAX® gravity interceptor may be installed as a stand alone unit, or in any number of different combinations to properly service the application. Different combinations are shown in Appendix 7, on page 23.

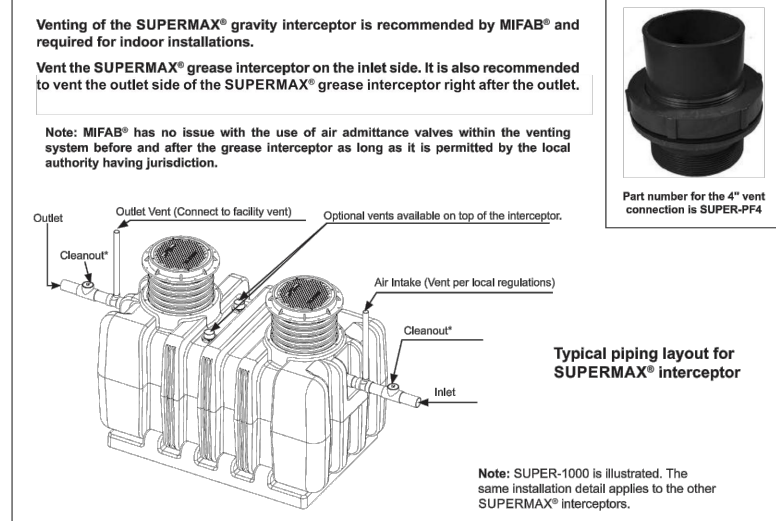
1) **FLOW CONTROLS** - Each MIFAB® SUPERMAX® interceptor is supplied with a factory sized internal flow control for each size unit, available. The flow control is an important component to ensure the proper operation and efficiency of the unit. Installation is accomplished using properly sized Extra Heavy Duty No Hub shielded couplings for any outdoor installation.

NOTE: For the SUPER-500 model, interceptors are supplied with stainless steel calibrated orifice plate (internal flow control). An external, vented, flow control fitting is required to be installed before the inlet of the grease interceptor to meet the P.D.I. G-101 for the SUPER-500 model.

2) **INLET/OUTLET PIPING** - The inlet and outlet piping connections require no hub pipe couplings (see MIFAB's M-HUB Series of no hub couplings). Keep outlet piping as straight as possible. MIFAB® recommends installation of SUPERMAX® interceptors and solids interceptors in accordance with all applicable laws, regulations and codes. Use only "sweep" connections. Do not install a "P" trap on the outlet connection of system as the system already has an internal gas trap.

3) **MULTIPLE UNITS** - When combining more than one grease interceptor or solids interceptor in series or parallel, always provide a 1 inch fall or change in grade between units.

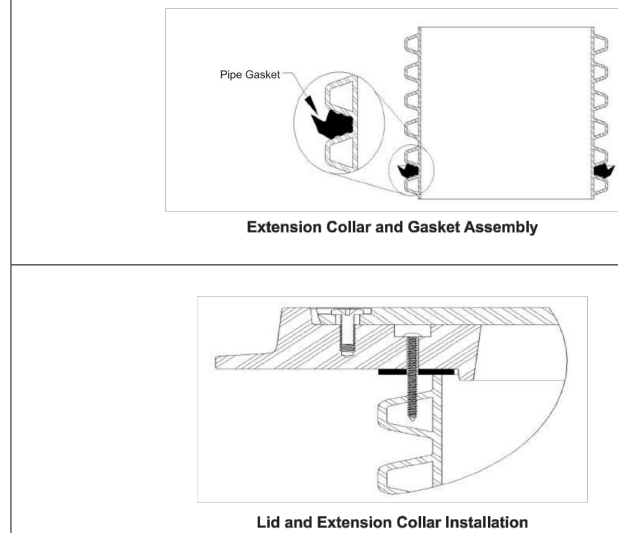
4) **VENTING** - Venting of the SUPERMAX® gravity interceptor is recommended by MIFAB® and required for indoor installations. Vent the SUPERMAX® grease interceptor on the inlet side. It is also recommended to vent the outlet side of the SUPERMAX® grease interceptor right after the outlet. An outlet vent or approved air admittance valve of at least 1/2 the diameter of the interceptor's outlet connection must be installed as close as possible to the SUPERMAX® outlet to prevent possible siphonage problems. The vent on the outlet piping is to be installed in accordance with all applicable laws, regulations and codes. Failure to provide venting for the interceptor voids MIFAB's warranty for the system.



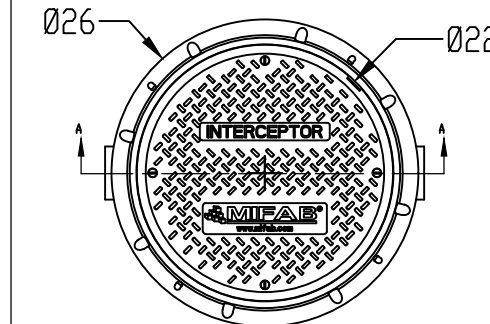
EXTENSION COLLAR

- MIFAB's patent extension system uses standard ADS 24N12 pipe. The contractor has to purchase it from MIFAB or buy a length of ADS pipe from their local waterworks wholesaler in order to complete the installation. The maximum recommended depth of the collars should be no more than 72".
- Install the Pipe Gasket onto the bottom of the pipe as shown. Then firmly press the 24" diameter pipe into the top opening(s) of the interceptor. It will bottom out at the pipe stop. The Gasket is designed to fit tightly around the extension collar. Prying the gasket into place with a pry tool can save time and make this process easier.
- Insert the extension collar and pipe gasket onto the opening of the SUPERMAX®. Press firmly until the extension is seated inside provided recessed channel. Both the SUPERMAX® are designed to fit tightly, and installation can be made easier by wetting the receiving area with mild soapy water. This will reduce the friction and allow the extension to slide more easily into place.
- Remove the cover from the lid assembly and this will expose predrilled screw holes. Affix the lid gasket with the self adhesive onto the underside of the collar. Place lid assembly onto the top of the corrugated pipe. Connect the lid assembly collar to the pipe with the 8 self tapping screws into the countersunk holes. Replace lid back onto the lid assembly collar.

To view an ADA extension preparation and installation video, go to:



BIG-SP/-L/-OF - BIG MAX HDPE SAMPLING PORT 36"HEIGHT WITH H-20 LID



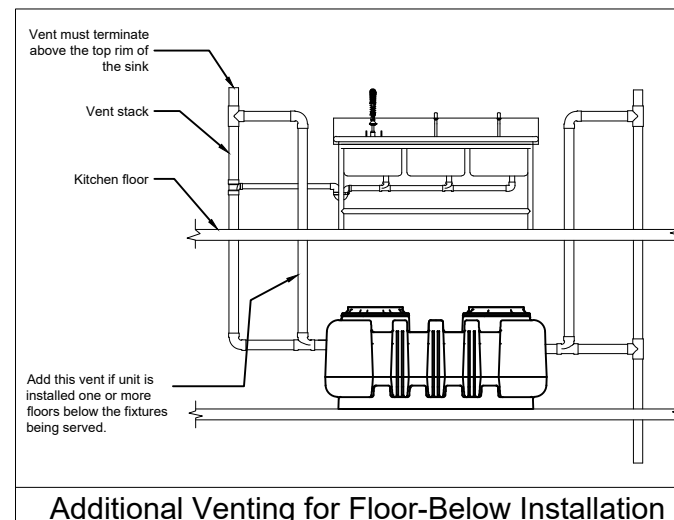
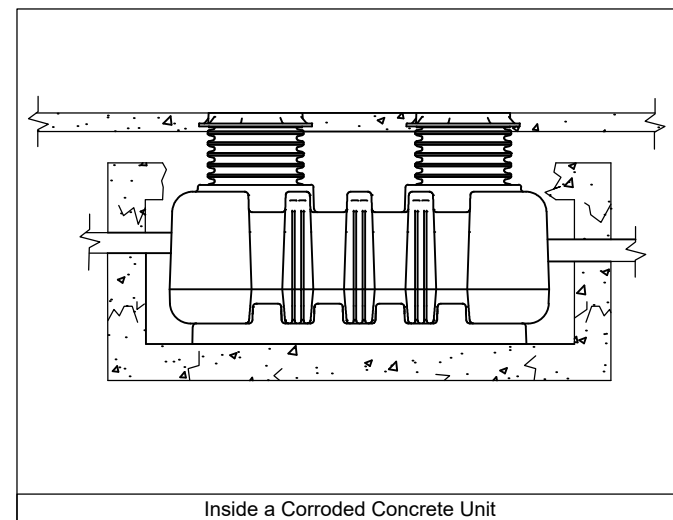
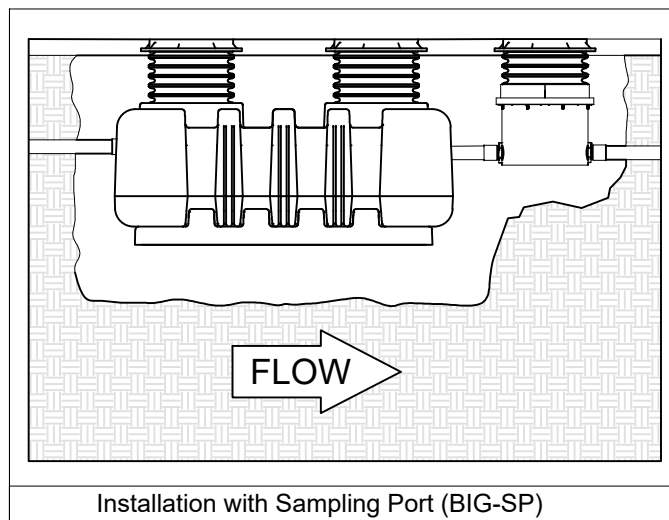
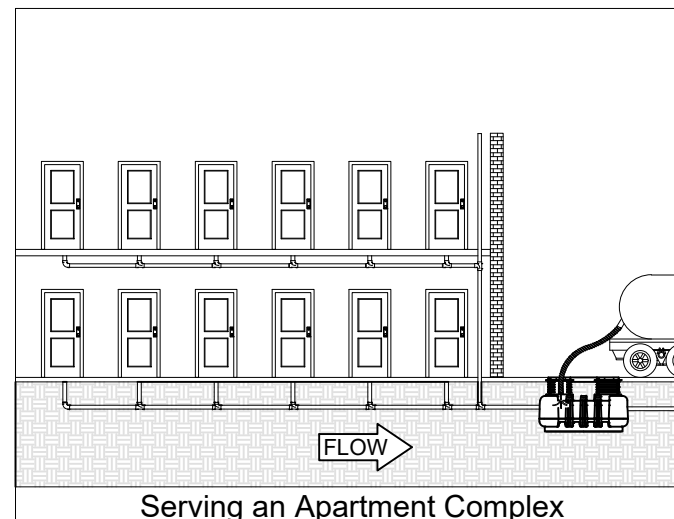
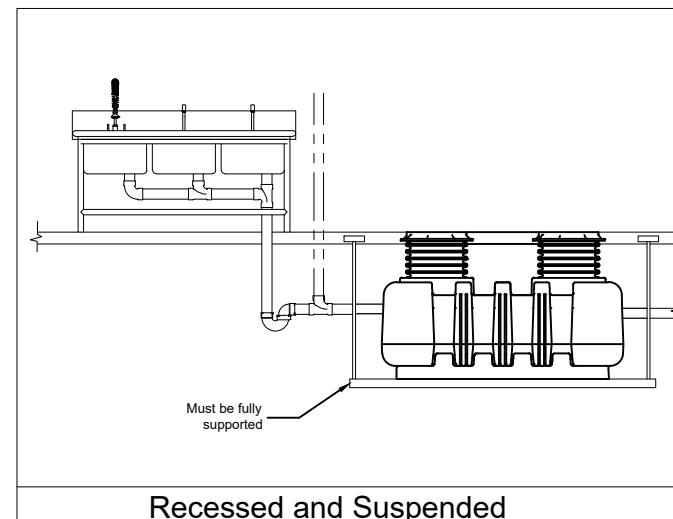
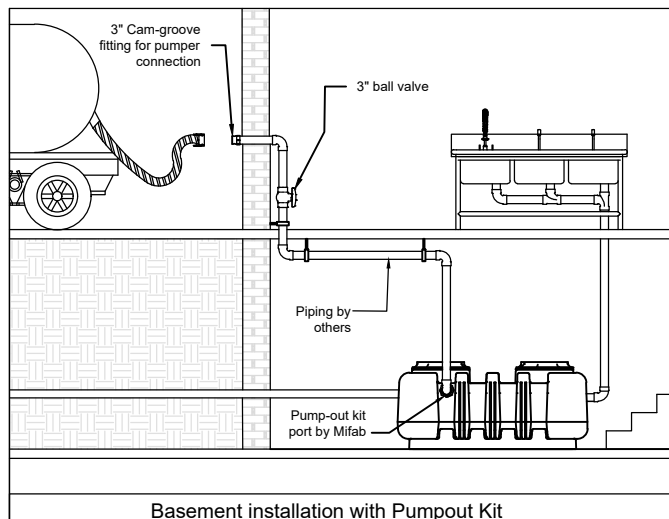
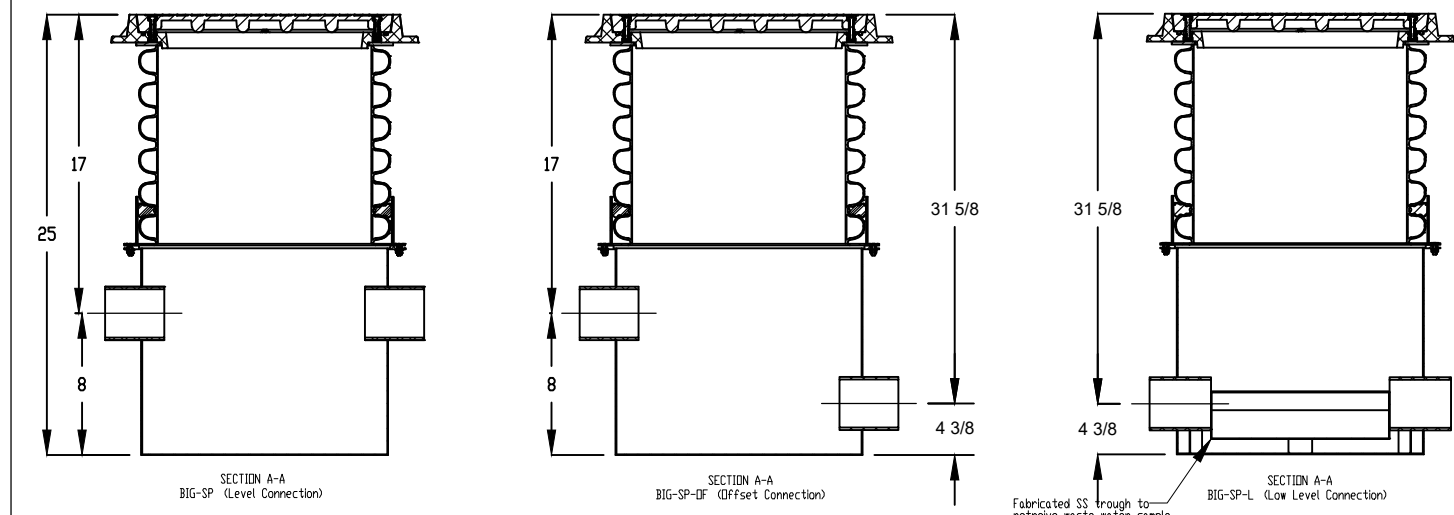
SPECIFICATIONS

NOTES

- 4" no-hub connection for inlet/outlet.
- Unit weight: total=125lbs.
- Unit supplied with H-20 load rated access cover, 18" corrugated pipe, and sealing gasket.
- Maximum operating temperature: 180° F continuous.
- Unit for below ground application: -DC for direct connect lid in above ground application.

ENGINEER SPECIFICATION GUIDE

MIFAB sampling part models BIG-SP, BIG-SP-OF, and BIG-SP-L are made in the USA of molded polyethylene.



TITLE:
100GPM HDPE GREASE INTERCEPTOR

SIZE DWG. NO.
C SUPER-500

SCALE: WEIGHT: SHEET 1 OF 1

PROPRIETARY AND CONFIDENTIAL
THE INFORMATION CONTAINED IN THIS DRAWING IS THE SOLE PROPERTY OF MIFAB, INC. ANY REPRODUCTION IN PART OR AS A WHOLE WITHOUT THE WRITTEN PERMISSION OF MIFAB, INC. IS PROHIBITED.