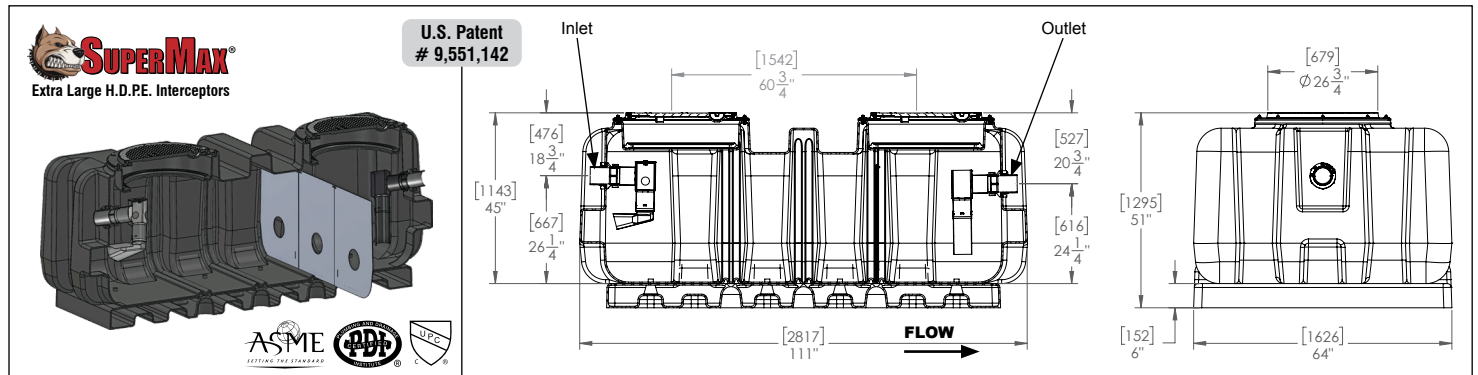


Location: _____

**SUPER-500-ASME**
**SUPERMAX® HYDRO MECHANICAL GREASE
INTERCEPTOR - 500 GALLONS LIQUID
HOLDING CAPACITY**


Specification: MIFAB® Series SUPER-500-ASME hydro mechanical grease interceptor with 500 U.S. gallons of liquid holding capacity has a limited lifetime warranty and is made in the U.S.A. out of seamless, rotationally molded High Density Polyethylene with 3/8" uniform wall thickness. Interceptor is designed for above or below ground installation and includes extension pipe gasket for ADS 24N12 (pipe not included) for the adjustable lid system, sample port access, internal baffle, deep seal trap covered by lid, internal flow control set to 100 GPM, base for support and floor level installation and 4" no hub inlet and outlet connections. Ductile Iron pickable lids, H-20 rated, proof-load tested to 40,000 lbs. provide a water / gas tight seal. The lids are designed in accordance with the loading requirements of AASHTO H-20. The high density polyethylene material is PE 3135 from Dow 9.39 with a density of 0.939 g/cm3. Note that the interceptor is tested and certified to the A112.14.3, (Type C), CSA B481 and listed with I.A.P.M.O. For indoor/outdoor use. The -PDI model is tested and certified to the P.D.I. G-101 Standard, 10 GPM flow rate.

Function: Used in restaurants, kitchens, institutions, industrial facilities such as food processing and packaging plants and other types of food processing areas where fat, oil and grease (FOG) drains with the waste water. All Super Max gravity interceptors can withstand a temperature of up to and including 150° Fahrenheit.



Model	Liquid Holding Capacity (Gallons / Cu. Ft.)	Grease Retention Capacity	Solids Capacity (Gallons)	Flow Rate (GPM)	F Connection Size	Shipping Weight (Lbs.)
SUPER-500-ASME	539 / 72	4059 lbs.	242	100	4" (102mm)	950

SUFFIX	OPTIONAL VARIATIONS	PART NO.
-AK	Anchor kit (set of two) for all SuperMax interceptors	SUPER-*-AK-SET (* = Specify Size)
-C	Lid Extension - up to 44" high - (2 pieces included)	SUPER-EXT-44
-C	Lid Extension - up to 72" high - (2 pieces included)	SUPER-EXT-72
-C	Lid Extension - up to 94" high - (2 pieces included)	SUPER-EXT-94
-DP	Dosing Pump for Lil Max, Big Max, SuperMax	XL-MI-PL-DP
-EP	Enzyme port for Lil Max, Big Max, SuperMax	XL-MI-PL-EP
-F6	6" no hub inlet and outlet - for each piece (Two pieces required) (flow rate of 700 GPM with 6" connections)	MI-G-PL-PF6
-F8	8" no hub inlet and outlet - for each piece (Two pieces required) (flow rate of 1200 GPM with 8" connections) (Not available for side inlets / outlets)	MI-G-PL-PF8
-FL-C	Membrane clamp kit - for all SuperMax interceptors (Two pieces required)	SUPER-FLM (2 pcs. Req.)
-HLA	High level alarm and float switch (to be installed on site) (for Lil Max, Big Max, SuperMax)	XL-MI-PL-HLA
-HLA2	High level alarm and dual float switch (to be installed on site) (for Lil Max, Big Max, SuperMax)	XL-MI-PL-HLA2
-HLAW	High level alarm and dual float switch with wifi capability (to be installed on site) (for Lil Max, Big Max, SuperMax)	XL-MI-PL-HLAW
-LHSI	No hub inlet on left hand side (not available with sediment bucket) (for Lil Max, Big Max, SuperMax)	MI-G-PL-PF4
-LHSO	No hub outlet on left hand side (not available with sediment bucket) (for Lil Max, Big Max, SuperMax)	MI-G-PL-PF4
-PDI	PDI plate and external, vented flow control fitting (to meet PDI G-101 Standard)	Contact MIFAB
-POK	Remote pump out kit (also includes Remote Pump Out (-RPO))	SM-MI-PL-*-POK (* = Specify Size)
-RHSI	No hub inlet on right hand side (not available with sediment bucket) (for Lil Max, Big Max, SuperMax)	MI-G-PL-PF4
-RHSO	No hub outlet on right hand side (not available with sediment bucket) (for Lil Max, Big Max, SuperMax)	MI-G-PL-PF4
-RPO	3" Remote pump outlet connections on top of interceptor - specify location and number required	Contact MIFAB
-SB	Sediment bucket - for all SuperMax interceptors	SUPER-*-PSB (* = Specify Size)
-SAMPORT	External sampling port - offset, 4" or 6" No Hub inlet / outlet	SAMPORT
-SP	External sampling port - inline, high connections	BIG-SP
-SP-L	External sampling port - inline, low connections	BIG-SP-L
-SP-OF	External sampling port - offset	BIG-SP-OF
-SST	Fire resistant fabricated stainless steel interceptor	Contact MIFAB®
-ST	Fire resistant fabricated 10 gauge powder epoxy coated steel interceptor	Contact MIFAB®
-STR	SuperMax Safety Shield	SUPER-STR
-T	Female threaded connections - 4" (for each piece - Two pieces required)	MI-G-PL-PF4T
-V	No Hub Vent connection - 4" - (specify number required & location - side and/or top)(2" & 3" vent connections also available, specify -V2 or -V3)	MI-G-PL-PF4

CALIFORNIA PROPOSITION 65 WARNING. This product contains chemicals known to the State of California to cause cancer and birth defects or other reproductive harm.

Job Name: _____

Page No: _____

Section No: _____

Contractor: _____

Schedule No: _____

Purchase Order No: _____