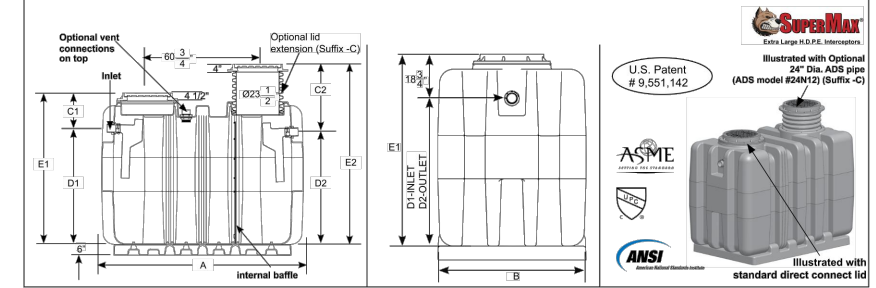


**MIFAB SUPER-2000**  
**SUPERMAX® GRAVITY GREASE INTERCEPTOR -**  
**2000 GALLONS LIQUID HOLDING CAPACITY**

Special feature: MIFAB® SUPER-2000 gravity grease interceptor with 2000 U.S. gallons of liquid holding capacity has a limited lifetime warranty and is made in the U.S.A. out of stainless, corrosion resistant materials with 304 stainless steel hardware. Interceptor is designed for above or below ground installation and includes extension pipe gasket for ADS 24" (2 pipe) inlet and outlet. Interceptor is designed for above or below ground installation and includes extension pipe gasket for ADS 24" (2 pipe) inlet and outlet. Interceptor is designed for above or below ground installation and includes extension pipe gasket for ADS 24" (2 pipe) inlet and outlet. Interceptor is designed for above or below ground installation and includes extension pipe gasket for ADS 24" (2 pipe) inlet and outlet.



Model	Liquid Holding Capacity (Gallons) (U.S. Fl. Liq.)	Grease Retention Capacity (Gallons)	Flow Rate (GPM)	Width (in.)	C' Dim. (in.)	D' Dim. (in.)	D' Dim. (in.)	D' Dim. (in.)	F' Dim. (in.)	Shipping Weight (Lbs.)	
2000	2,022 / 269	15,102	202	200	111"	64"	18.70"	37.20"	85.50"	104.20"	1,350

Job Name: \_\_\_\_\_ Page No: \_\_\_\_\_  
 Section No: \_\_\_\_\_ Contractor: \_\_\_\_\_  
 Schedule No: \_\_\_\_\_ Purchase Order No: \_\_\_\_\_

**MIFAB LiMax BIG MAX SuperMax INT-2022**  
**GREASE PRODUCTION SIZING METHOD**

Some industry people believe that sizing grease interceptors based on the amount of grease that is produced in a restaurant or kitchen makes a lot more sense than sizing based on flow rate of water and / or drainage fixture units going into the grease interceptor. This can be done by flow rate and then by grease capacity for pump-out cycle. Note that local codes and ordinances should be followed for compliance. For example, a Chinese restaurant with a 4" drain line can be sized to require a grease interceptor with a 50 GPM flow rate. A Subway deli with a 4" drain line can also be sized to require a grease interceptor with a 50 GPM flow rate. Therefore, two restaurants with very different meal types and production of grease can end up having the same code compliant grease interceptor sizing.

The following information and sizing chart can be used to size grease interceptors based on the grease produced in a variety of different restaurants. Note that local codes and ordinances should be followed for compliance.

**1. SIZE BY PIPE DIAMETER/FLOW RATE**  
 Hydraulic grease interceptor sizing using gravity flow rates (Per Chapter 30 of the Uniform Plumbing Code)

DIAMETER OF GREASE WASTE PIPE	MAX. FULL PIPE FLOW	ONE MINUTE DRAINAGE PERIOD	TWO MINUTE DRAINAGE PERIOD
2"	20 GPM	20 GPM	10 GPM
3"	60 GPM	75 GPM	35 GPM
4"	125 GPM	150 GPM	75 GPM
5"	230 GPM	250 GPM	125 GPM
6"	375 GPM	500 GPM	250 GPM

**2. FIND GREASE PRODUCTION VALUE**

RESTAURANT TYPE	GREASE PRODUCTION VALUES	GREASE PRODUCTION SIZING METHOD
<b>Low Grease Production</b>	.005 lbs./meal no fatware .005 lbs./meal with fatware	From piggy, hotel breakfast bar, sub shops, wash, deli, bar, convenience store, residential
<b>Medium Grease Production</b>	.025 lbs./meal no fatware .025 lbs./meal with fatware	Cafes, low grease output restaurant, pizza restaurant, grocery stores (with no fryer), ice cream parlor
<b>High Grease Production</b>	.035 lbs./meal no fatware .045 lbs./meal with fatware	Full fare family, German, Italian, fast food Mexican, hamburger bar and grill and fast food restaurant, medium level restaurants with fryer
<b>Very High Grease Production</b>	.055 lbs./meal no fatware .075 lbs./meal with fatware	Full fare BBQ, fast food fried chicken, full fare Mexican, Steaks and Seafood, Hawaiian and Chinese

CALIFORNIA PROPOSITION 65 WARNING: This product contains chemicals known to the State of California to cause cancer and birth defects or other reproductive harm. Design and dimensions are subject to modification. Prices do not include applicable taxes. Visit www.mifab.com for the most recent product information.

**MIFAB LiMax BIG MAX SuperMax INT-2022**  
**GREASE INTERCEPTOR CAPACITY DATA**

Model No.	Flow Rate (GPM)	Liquid Cap. (Gal)	Grease Design Cap. (Lbs.)	Sediment Cap. (Gal)
LIL-7	7	5.8	37	2.0
LIL-10	10	8.5	42	2.0
LIL-15	15	13	50	3.1
LIL-20	20	16	73	3.9
LIL-25	25	23	79	5.6
LIL-35	35	39	86	10.6
LIL-50	50	44	109	11.9
LIL-25-LP	25	19	74	11.9
BIG-750	75	140	501	42
BIG-1150	100	300	1556	115
SUPER-500	250	539	3492	53
SUPER-750	250	772	5002	77
SUPER-1000	250	1015	6577	102
SUPER-1250	250	1262	8177	126
SUPER-1500	250	1512	8501	151
SUPER-1750	250	1762	9862	152
SUPER-2000	250	2022	13102	202

Capacities listed are for reference. Many external circumstances can have an effect on the data provided.

**GREASE PRODUCTION VALUES**

PUMP OUT CYCLE	MEALS PER DAY	1	2	3	4	5	6	7	8
30	250	LIL-7	LIL-15	BIG-750	BIG-750	BIG-750	BIG-750	BIG-750	BIG-750
	500	LIL-20	LIL-50	BIG-750	BIG-750	BIG-750	BIG-1150	BIG-1150	BIG-1150
	750	LIL-50	BIG-750	BIG-1150	BIG-1150	BIG-1150	BIG-1150	BIG-1150	BIG-1150
	1000	BIG-750	BIG-750	BIG-1150	BIG-1150	BIG-1150	BIG-1150	SUPER-500	SUPER-500
	1000	BIG-750	BIG-750	BIG-1150	BIG-1150	BIG-1150	SUPER-500	SUPER-500	SUPER-500

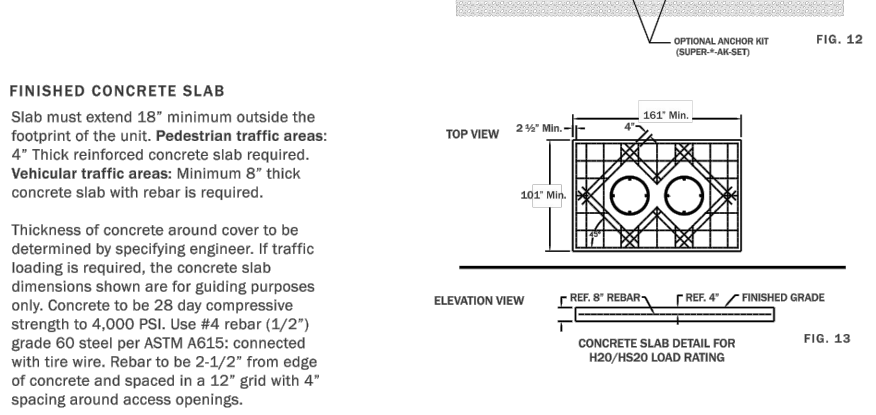
CALIFORNIA PROPOSITION 65 WARNING: This product contains chemicals known to the State of California to cause cancer and birth defects or other reproductive harm. Design and dimensions are subject to modification. Prices do not include applicable taxes. Visit www.mifab.com for the most recent product information.

**MIFAB**

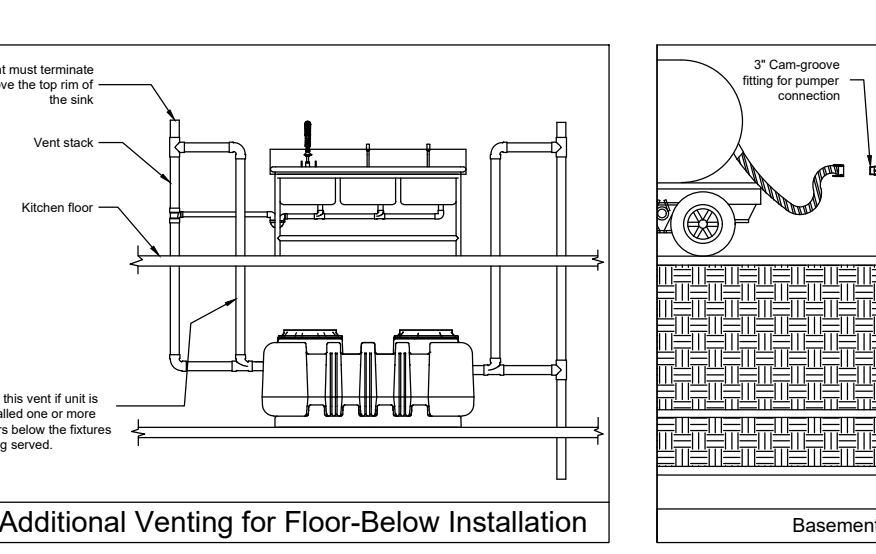
**INSTALLATIONS**

**BELOW GRADE/BACKFILL INSTALL:**

1. Install the interceptor(s) as close as practical to the fixtures being served.
2. The excavation must be a minimum of 12" greater on all sides of the tank.
3. The depth of the excavation must be greater than 6" on the bottom of the interceptor.
4. Fill the interceptor with water prior to backfilling in order to prevent the interceptor from floating.
5. Fully install the double wall corrugated pipe and lid prior to backfilling.
6. Concrete or finishing material requirements is to be determined by the specifying engineer.
7. Encase the interceptor in well-packed 3/4" rock, or sand. Do not compact backfill around interceptor.
8. To prevent float out: the Anchor kit is recommended for installations in high water table conditions. This is to be determined by the specifying engineer.



**FINISHED CONCRETE SLAB**  
 Slab must extend 18" minimum outside the footprint of the unit. Pedestrian traffic areas: 4" thick reinforced concrete slab required. Vehicular traffic areas: Minimum 8" thick concrete slab with rebar is required.

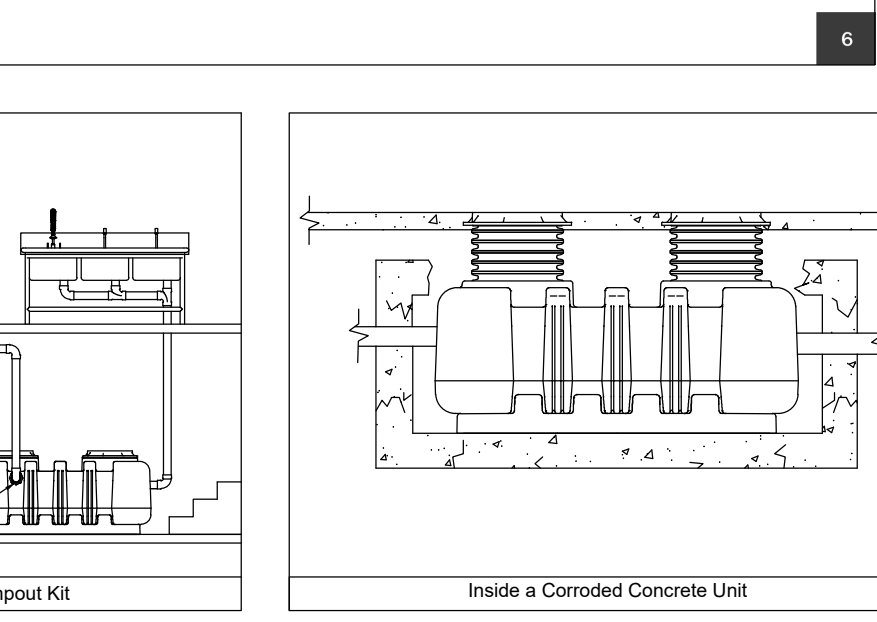


**MIFAB**

**INSTALLATIONS**

**EXTENSION COLLAR INSTALLATION**

1. Set the SUPER MAX unit height to grade by installing the 24" diameter corrugated pipe onto the top opening(s) of the body, then insert the lid on top to measure and adjust the finished height from the top to grade. If less extension is needed, measure the required dimension and mark the extension. Then, cut to fit with a saw. The extension system is ADS pipe and is designed to be field cut as needed. If a longer extension is required to meet grade, new ADS pipe can be purchased and cut to length in order to equal grade. (ADS pipe part #24X12)
2. Install the Pipe Gasket between the bottom ribs. Then firmly press the 24" diameter corrugated pipe into the top opening(s) of the body, it will bottom out at the pipe stop. The gasket is designed to fit tightly around the extension collar. Prying the gasket into place with a pry tool can save time and make this process easier. Watch the installation video at www.dl.ly/ADS-gasket.
3. Insert the extension collar and pipe gasket onto the opening of the SUPER MAX. Press firmly until the extension is seated inside the provided recessed channel. The SUPER MAX is designed to fit tightly, and installation can be made easier by wetting the receiving area with mild soapy water. This will reduce the friction and allow the extension to press more easily into place.
4. Remove the cover from the lid assembly to see the pre-drilled screw holes. Affix the lid gasket with the self adhesive onto the underside of the collar. Place lid assembly onto the top of the corrugated pipe. Connect the lid assembly collar to the pipe with the 6 self tapping screws into the countersunk holes. Replace lid back onto the lid assembly collar.
5. When installing the collar on concrete roads, an 8 inch-wide concrete ring beam with a 16" wide guard circle around it should be poured between the collar and brick setting to make the surrounding compaction level and unmovable.
6. When installing the collar on a bituminous road, the collar must be installed after the road is paved. Roller compaction by construction equipment around the collar must be avoided. A hole that is slightly larger than the collar should be inserted before pouring the pavement. The reserved hole can help ensure the installation quality and prolong the usefulness of the installation.

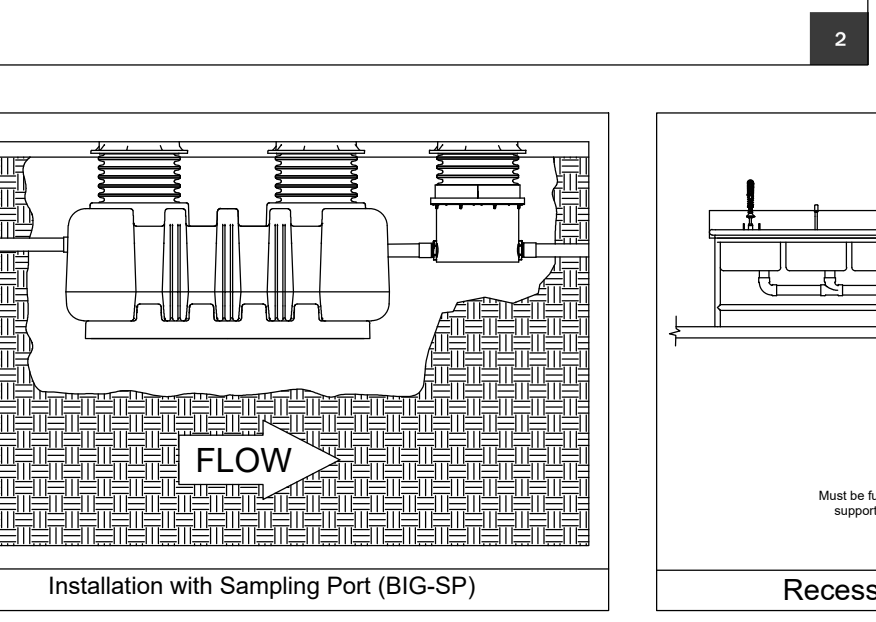
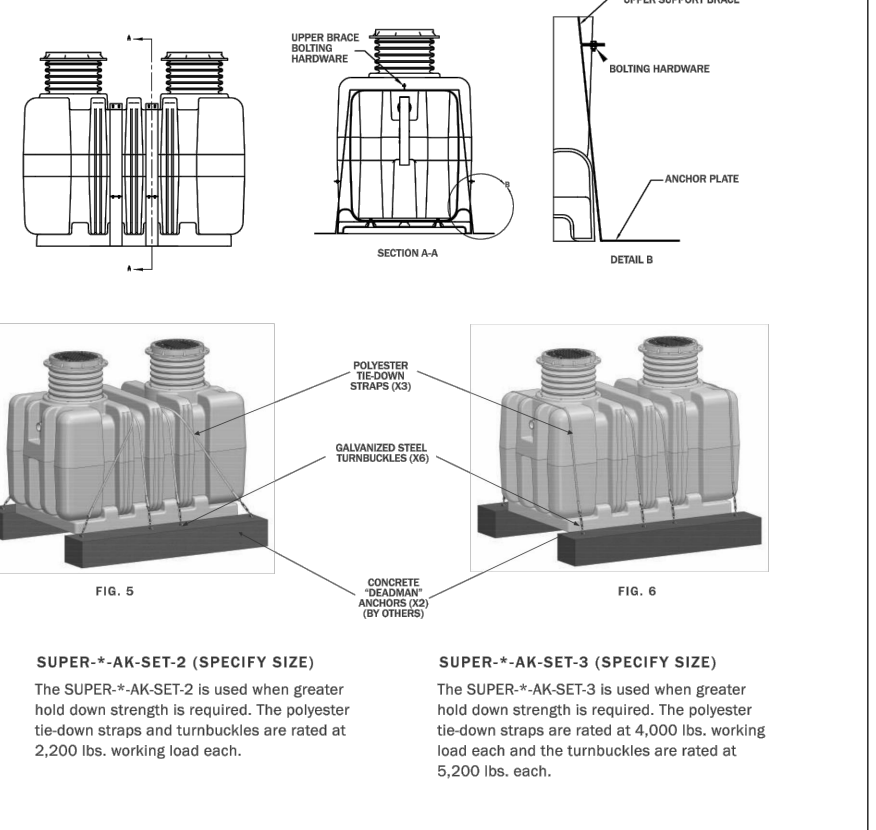


**MIFAB**

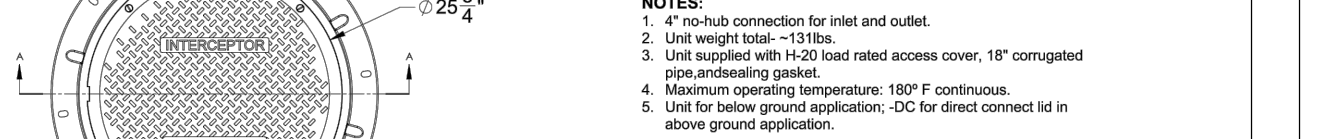
**SPECIAL PRECAUTIONS**

**4. ABOVE GRADE INSTALLATION SUPPORT - ANCHOR KITS**

Anchor kit is recommended for installation in high water table conditions to prevent float out. Necessity to be determined by Project Engineer. Hold down force achieved by backfill weight acting on anchor plates. Bolt upper support brace together, then place over center channel. Bolt the anchor plate and upper support brace together using bolting hardware. Anchor plate may be bolted to concrete slab using provided holes.



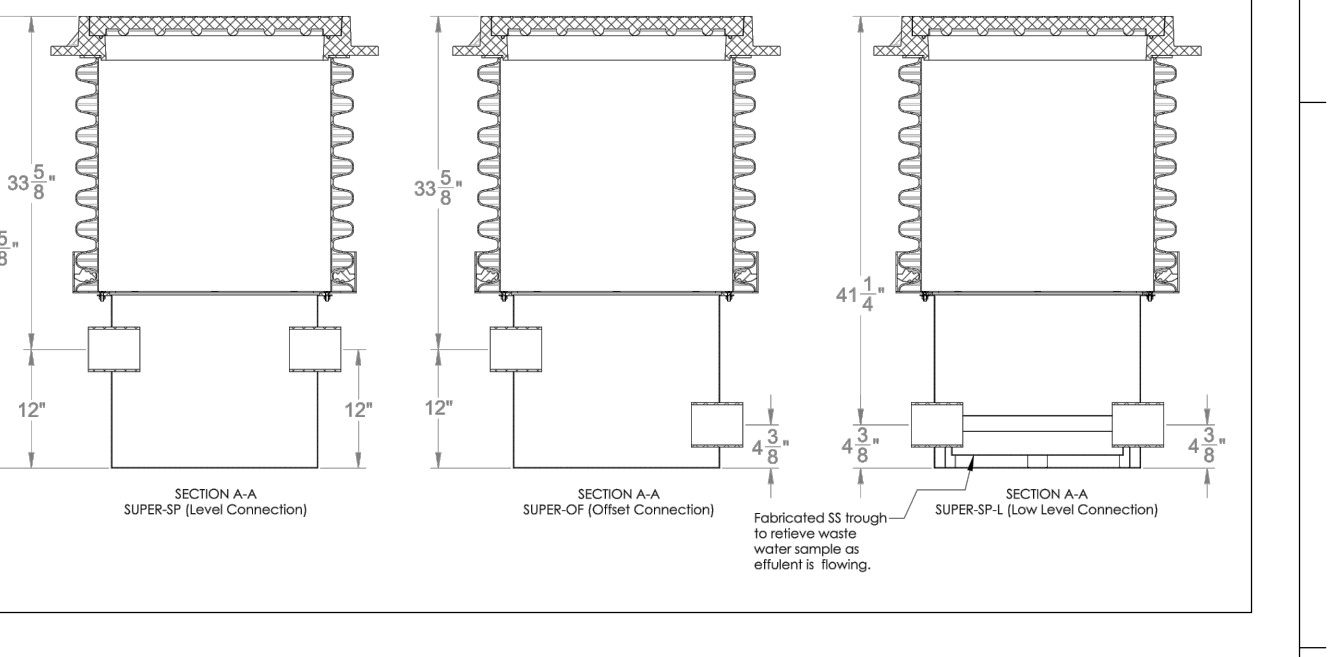
**MIFAB**



**SPECIFICATIONS**

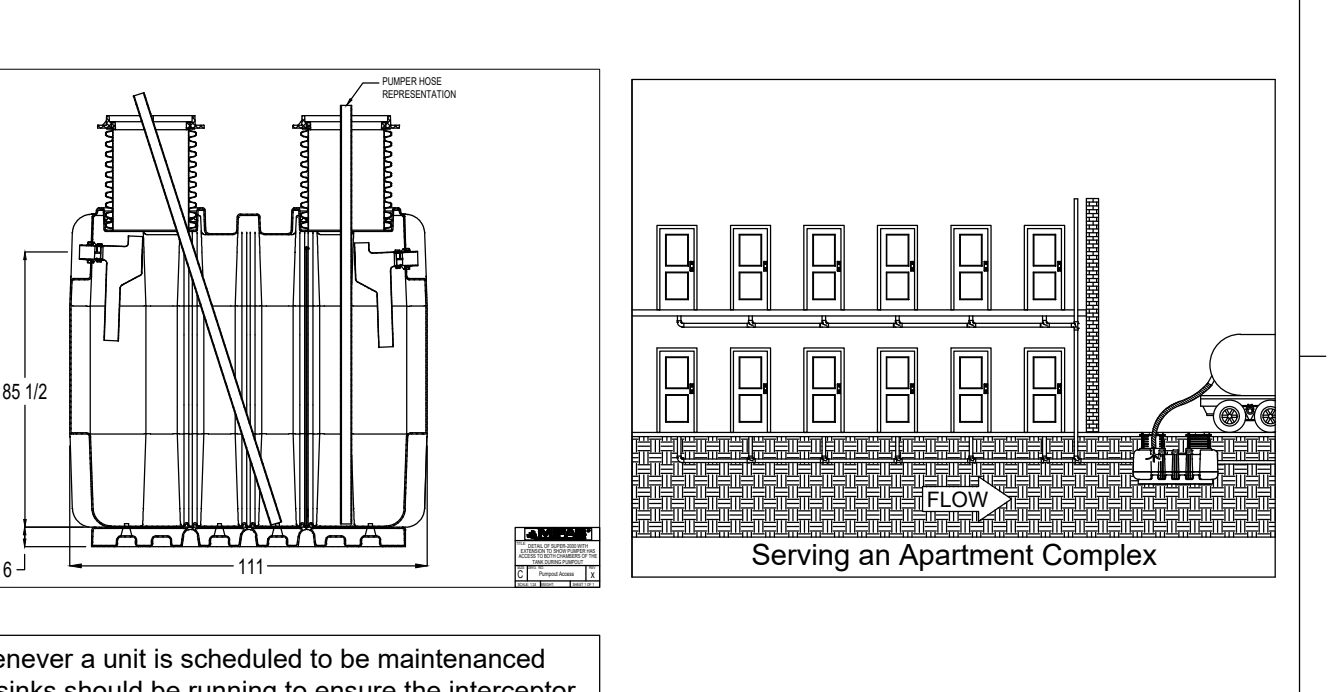
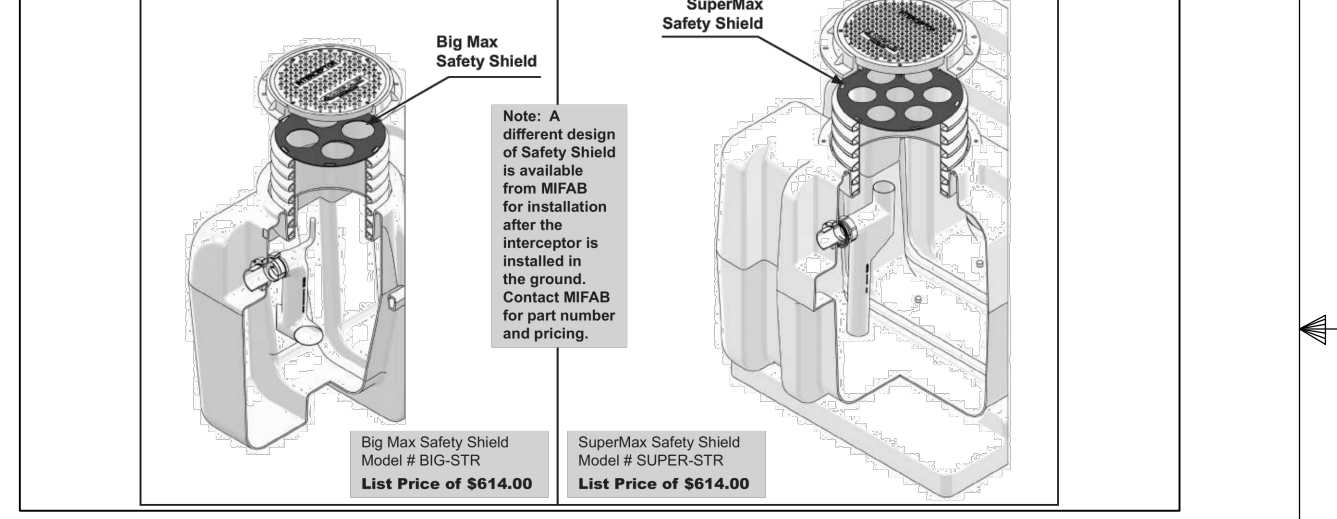
NOTES:  
 1. 4" no-hub connection for inlet and outlet.  
 2. Unit weight total - 135 lbs.  
 3. Unit supplied with H-20 load rated access cover, 18" corrugated pipe, and sealing gasket.  
 4. Maximum operating temperature: 190° F continuous.  
 5. Unit for below ground application - DC for direct connect lid in above ground application.

**ENGINEER SPECIFICATION GUIDE**  
 MIFAB sampling port models BIG-SP, BIG-SP-OF, and BIG-SP-L are made in the USA of molded polyethylene.



**MIFAB SAFETY SHIELD**

The issue of open sewer manholes is a real one. Unfortunately, interceptor lids are sometimes not secured properly and / or left off the interceptor. This has resulted in people falling into the interceptor - causing drowning and deaths. MIFAB's solution is the Safety Shield. It is a heavy duty fabricated steel, powder epoxy coated plate with a 450 lb. load rating that is installed underneath the lid, on top of the pipe extension. The Safety Shield provides enough access for inspection and pump out / maintenance while preventing people from falling into the interceptor. It can also be removed for full access to the interceptor. The MIFAB Safety Shield is available with all Big Max and SuperMax interceptors and is to be installed on top of the corrugated pipe extension before the lid assembly is placed on top of the pipe extension.



Whenever a unit is scheduled to be maintained the sinks should be running to ensure the interceptor is full of water.

**Additional Venting for Floor-Below Installation**



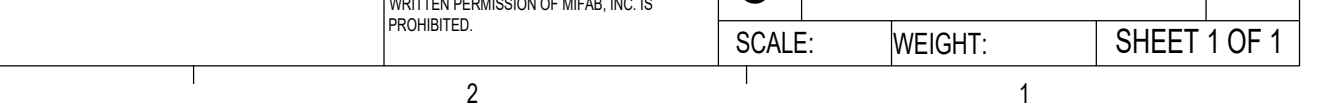
**Basement Installation with Pumpout Kit**



**Installation with Sampling Port (BIG-SP)**



**Recessed and Suspended**



**MIFAB**

TITLE: **250GPM HDPE GREASE INTERCEPTOR**

SIZE: **C** DWG. NO. **SUPER-2000** REV

SCALE: \_\_\_\_\_ WEIGHT: \_\_\_\_\_ SHEET 1 OF 1

PROPRIETARY AND CONFIDENTIAL  
 THE INFORMATION CONTAINED IN THIS DRAWING IS THE SOLE PROPERTY OF MIFAB, INC. ANY REPRODUCTION IN PART OR AS A WHOLE WITHOUT THE WRITTEN PERMISSION OF MIFAB, INC. IS PROHIBITED.