

Location: \_\_\_\_\_

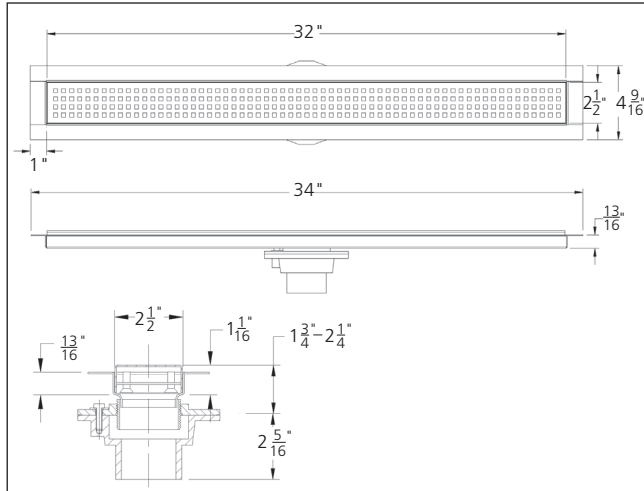


**P9000-CFL**

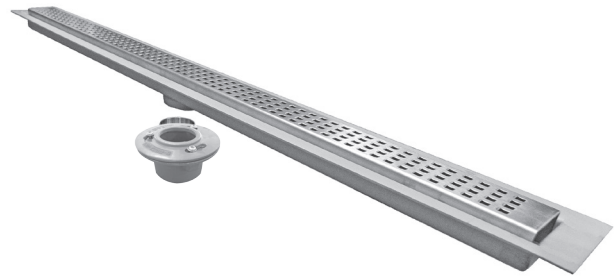
**2 1/2" Wide, Stainless Steel Linear Shower Drain  
with Anchor Flange, Square Hole Grate Pattern  
and Flanged Bottom Outlet**

**SPECIFICATION:** MIFAB® Series P9000-CFL, 2 1/2" wide, 1 1/16" deep Type 304 (CF8) fabricated stainless steel linear shower drain. Complete with vertically adjustable top assembly and frame and 2" cast iron no hub center outlet connection with anchor flange, membrane clamp and light-duty satin finished stainless steel grate with square hole pattern.

**FUNCTION:** Designed for installation in shower areas where a minimum of 2" (51) concrete pour is required. The drain can be adjusted upward to accommodate an additional 1/2" in height. The anchor flange allows for liquid / fabric waterproofing. The P9000-CFL eliminates the need to slope the finished flooring in multiple directions. This allows the drainage of a larger floor surface area than typical shower drains. The floor can be pitched in one direction toward the linear shower drain. Type 304 construction provides anti-microbial resistance, durability and low maintenance.



**Note:** Every order of this product is a special / custom order fabrication. This product is non returnable and noncancellable.



MODEL NUMBER	DESCRIPTION
<b>P9002-CFL-24</b>	2 1/2" wide, Type 304 Stainless Steel Linear Shower Drain with anchor flange, 24" long, satin finish
<b>P9002-CFL-32</b>	2 1/2" wide, Type 304 Stainless Steel Linear Shower Drain with anchor flange, 32" long, satin finish
<b>P9002-CFL-36</b>	2 1/2" wide, Type 304 Stainless Steel Linear Shower Drain with anchor flange, 36" long, satin finish
<b>P9002-CFL-42</b>	2 1/2" wide, Type 304 Stainless Steel Linear Shower Drain with anchor flange, 42" long, satin finish
<b>P9002-CFL-48</b>	2 1/2" wide, Type 304 Stainless Steel Linear Shower Drain with anchor flange, 48" long, satin finish
<b>P9002-CFL-60</b>	2 1/2" wide, Type 304 Stainless Steel Linear Shower Drain with anchor flange, 60" long, satin finish

**Note:** All grates are Load Class "A", "Light Duty" Grates.

OPTIONAL VARIATIONS	DESCRIPTION
<b>-5</b>	Hair Strainer
<b>-CSM</b>	Custom satin finish, stainless steel grate design and body dimensions
<b>-CSM-ORB</b>	Custom oil rubbed bronze grate design and body dimensions
<b>-CSM-PS</b>	Custom polished stainless steel grate design and body dimensions
<b>-ORB</b>	Oil rubbed bronze grate finish, for 24" long shower drain
	Oil rubbed bronze grate finish, for 32" long shower drain
	Oil rubbed bronze grate finish, for 36" long shower drain
	Oil rubbed bronze grate finish, for 42" long shower drain
	Oil rubbed bronze grate finish, for 48" long shower drain
	Oil rubbed bronze grate finish, for 60" long shower drain
<b>-PS</b>	Polished stainless steel grate finish, for 24" long shower drain
	Polished stainless steel grate finish, for 32" long shower drain
	Polished stainless steel grate finish, for 36" long shower drain
	Polished stainless steel grate finish, for 42" long shower drain
	Polished stainless steel grate finish, for 48" long shower drain
	Polished stainless steel grate finish, for 60" long shower drain
<b>T</b>	2" Threaded body outlet connection with anchor flange and membrane clamp

CALIFORNIA PROPOSITION 65 WARNING. This product contains chemicals known to the State of California to cause cancer and birth defects or other reproductive harm.

Job Name: \_\_\_\_\_

Page No: \_\_\_\_\_

Section No: \_\_\_\_\_

Contract: \_\_\_\_\_

Schedule No: \_\_\_\_\_

Purchase Order No: \_\_\_\_\_