

Location: _____

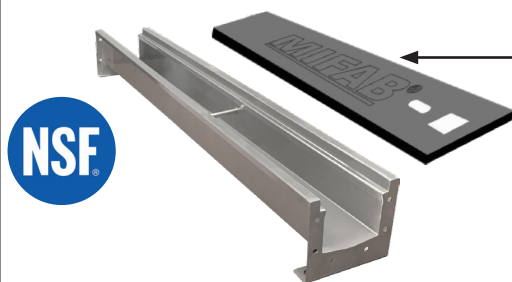


P6060

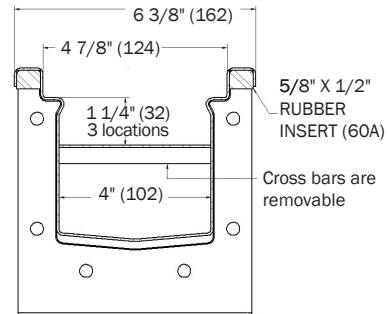
**6" WIDE, 4" INTERNAL WIDTH, STAINLESS
STEEL CHANNEL AND GRATE SYSTEM**

Specification: MIFAB® Series P6060, 6" wide, 4" internal width, 16 gauge fabricated Type 304 stainless steel presloped trench drain (1% / 1/8" per foot). Channels are available in one and two meter lengths, have flanged ends to connect to each other with a neoprene rubber gasket in between. Bottom and end outlets are available in 3" or 4" no hub outlet connections.

Function: Used in industrial, commercial, kitchen and other hygienic areas. Type 304 stainless steel construction provides for ease of cleaning, maintenance and sanitary installation. The inside of the body is manufactured without any overlapping material to ensure that bacteria does not have a place to grow. All grate openings are polished to a smooth finish.



Plastic pour board to protect the grate seat during installation is included with every meter long channel (Part # T100-PBRD)



P6060-HDW - Universal gasket for connecting channels, end caps and end outlets with hardware included with every channel, end cap / end outlet ordered

CHANNEL#	LENGTH	C1 (Shallow invert)	C2 (Deep invert)
P6061-PB	78.74" (2m)	4" (102)	4.78" (121)
P6061N-PB	78.74" (2m)	4.78" (121)	4.78" (121)
P6061N-PB-B03	78.74" (2m) (w/3" B0)	4.78" (121)	4.78" (121)
P6061N-PB-B04	78.74" (2m) (w/4" B0)	4.78" (121)	4.78" (121)
P6061N-PB-1M	39.37" (1m)	4.78" (121)	4.78" (121)
P6062-PB	78.74" (2m)	4.78" (121)	5.56" (141)
P6063-PB	78.74" (2m)	5.56" (141)	6.34" (161)
P6063N-PB	78.74" (2m)	6.34" (161)	6.34" (161)
P6063N-PB-B03	78.74" (2m) (w/3" B0)	6.34" (161)	6.34" (161)
P6063N-PB-B04	78.74" (2m) (w/4" B0)	6.34" (161)	6.34" (161)
P6063N-PB-1M	39.37" (1m)	6.34" (161)	6.34" (161)
P6064-PB	78.74" (2m)	6.34" (161)	7.12" (181)
P6065-PB	78.74" (2m)	7.12" (181)	7.9" (201)
P6065N-PB	78.74" (2m)	7.9" (201)	7.9" (201)
P6065N-PB-B03	78.74" (2m) (w/3" B0)	7.9" (201)	7.9" (201)
P6065N-PB-B04	78.74" (2m) (w/4" B0)	7.9" (201)	7.9" (201)
P6065N-PB-1M	39.37" (1m)	7.9" (201)	7.9" (201)



MODEL #	DESCRIPTION	MATERIAL	WEIGHT (Lbs.)
P6060-CB620-S03	6" x 20" Catch Basin (includes end cap, transition plate and 3" no hub side outlet). (See Page 17 for Catch Basin dimensions and sediment bucket option)	Type 304 Stainless Steel	10.00
P6060-CB620-S04	6" x 20" Catch basin (includes end cap, transition plate and 4" no hub side outlet). (See Page 17 for Catch Basin dimensions and sediment bucket option)	Type 304 Stainless Steel	10.00
P6060-PE03	3" No Hub End Outlet	Type 304 Stainless Steel	2.00
P6060-PE04	4" No Hub End Outlet	Type 304 Stainless Steel	2.00
P6060-PEC	Closed End Cap	Type 304 Stainless Steel	2.00
-6	Vandal Proof, (Center Lockdown)	Type 304 Stainless Steel	1.00
-7MG	MI-GARD Trap Seal Protection Device	Silicone Rubber	2.00
-20	Bottom Outlet Strainer (3" - P6060-B03-ST, 4" - P6060-B04-ST)	Type 304 Stainless Steel	2.00
-29	Type 316 Stainless Steel Channel	Type 316 Stainless Steel	-
-45	45 Degree fabricated body	Type 304 Stainless Steel	-
-90	90 Degree fabricated body	Type 304 Stainless Steel	-
-CF	Cross fabricated body	Type 304 Stainless Steel	-
-FL	Anchor (Waterproofing) flange	Type 304 Stainless Steel	-
-FLC	Membrane clamp (includes anchor flange)	Type 304 Stainless Steel	-
-NOZ	Wash down spray nozzle connection (1/2" NPT.)	Type 304 Stainless Steel	-
-TEE	Tee fabricated body	Type 304 Stainless Steel	-

CALIFORNIA PROPOSITION 65 WARNING. This product contains chemicals known to the State of California to cause cancer and birth defects or other reproductive harm.

Job Name: _____ Page No: _____
Section No: _____ Contractor: _____
Schedule No: _____ Purchase Order No: _____