

Location: _____

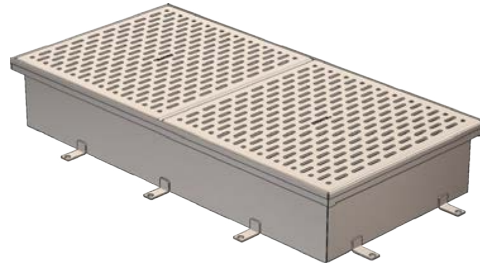
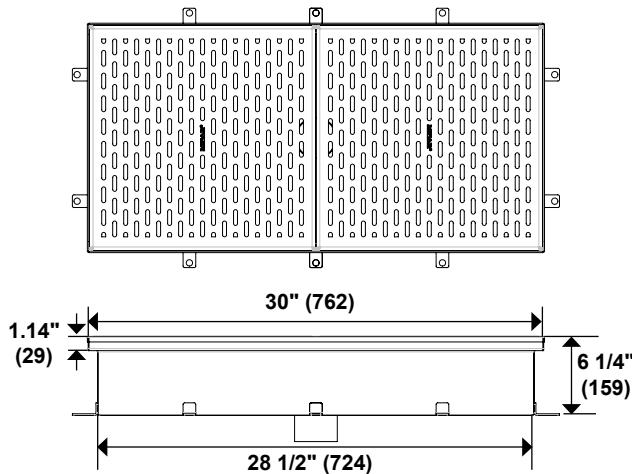


P5000

Stainless Steel Kettle Drain

SPECIFICATION: MIFAB® Series P5000, kettle drain manufactured out of 16 gauge, Type 304 stainless steel with anchor tabs and slotted Load Class "A" Light duty stainless steel loose set full grate with bead blasted finish. Bottom outlets are centered and available in 4", 6" or 8" no hub outlet connections and fabricated as part of the drain. Also available with an optional anchor flange (Suffix -FL) and B, or C load rated grates.

FUNCTION: Used in kitchen, restaurant and food processing areas for placement under or within close proximity to the kettles that they will serve. A variety of grate designs are available for the various applications or locations in the cooking area. Type 304 stainless steel construction provides for ease of cleaning, maintenance and sanitary installation. All grate openings are polished to a smooth finish.



ANSI A112.21.1M Point Drain Light Duty Load Rated up to 2,000 Lbs.

Specifying engineer is responsible for concrete encasement and reinforcing based upon application and local codes.

The P5000-LCB is NSF certified with a load classification of Medium Duty.

MODEL NUMBER	SIZE	MODEL NUMBER	SIZE	OPTIONAL VARIATIONS	DESCRIPTION
P5001	12" x 24"	P5009-96	18" x 96"	-C	Membrane Clamp (includes anchor flange) (Two pieces) (P5001 to P5009)
P5002	12" x 30"	P5009-108	18" x 108"	-C	Membrane Clamp (includes anchor flange) (Two pieces) (P5010 to P5018)
P5003	12" x 36"	P5009-120	18" x 120"	-F4	4" Round Stainless Steel Funnel
P5004	12" x 48"	P5010	24" x 24"	-FL	Anchor Flange (P5001 to P5009)
P5004-60	12" x 60"	P5011	24" x 30"	-FL	Anchor Flange (P5010 to P5018)
P5004-72	12" x 72"	P5012	24" x 36"	-FSSC	Type 304 Stainless Steel Slotted Grate, Load Class C
P5004-84	12" x 84"	P5013	24" x 48"	-FSPC	Type 304 Stainless Steel Perforated Grate, Load class C
P5004-96	12" x 96"	P5013-60	24" x 60"	-G	4" x 9" Oval Stainless Steel Funnel
P5004-108	12" x 108"	P5013-72	24" x 72"	-90	Vandal Proof grates (center lockdown)
P5004-120	12" x 120"	P5013-84	24" x 84"	-6	1/2" Trap seal primer connection
P5005	18" x 18"	P5013-96	24" x 96"	-7	MI-GARD trap seal protection device (2", 3", 4" or 6")
P5006	18" x 24"	P5013-108	24" x 108"	-20	Bottom outlet strainer (P5000-ST)
P5007	18" x 30"	P5013-120	24" x 120"	-22	Less Grate (P5001 to P5009)
P5008	18" x 36"	P5014	30" x 30"	-22	Less Grate (P5010 to P5018)
P5009	18" x 48"	P5015	30" x 36"	-51	Full grate with 3" square opening in center
P5009-60	18" x 60"	P5016	30" x 48"	-150	Half grate
P5009-72	18" x 72"	P5017	36" x 36"	-175	Three Quarter Grate
P5009-84	18" x 84"	P5018	36" x 48"		

Note: Every order of this product is a special / custom order fabrication. This product is non-returnable and non-cancellable.

NOTE: Type 316 S.S. product available. Contact MIFAB® for pricing.

CALIFORNIA PROPOSITION 65 WARNING. This product contains chemicals known to the State of California to cause cancer and birth defects or other reproductive harm.

Job Name: _____ Page No: _____
 Section No: _____ Contract: _____
 Schedule No: _____ Purchase Order No: _____

MIFAB® reserves the right to make changes in material and design without formal notice or obligation.

USA: 1-800-465-2736 www.mifab.com CAN: 1-800-387-3880