

Location: _____

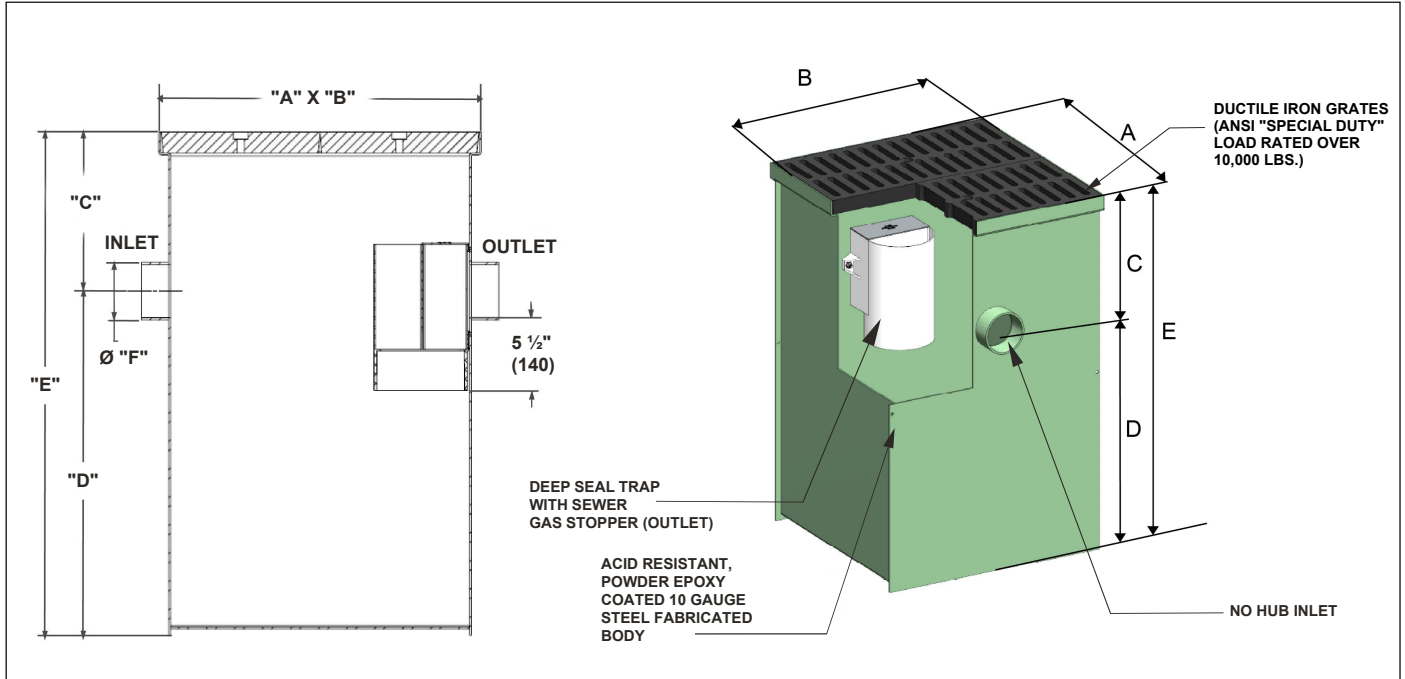


MI-SI

SAND INTERCEPTOR

Specification: MIFAB® Series MI-SI ____ (specify model) acid resistant, powder epoxy coated inside and outside fabricated 10 gauge steel sand interceptor with the flow rate of ____ GPM (specify). Interceptor complete with ANSI rated "Special Duty" ductile iron grates with load rating over 10,000 lbs., deep seal trap, integral sewer gas stopper, inlet and outlet.

Function: Used in service areas to receive wastewater with sand contaminant through the top grates. Integral sewer gas stopper will prevent harmful gases from entering via the outlet. Electro-statically applied powder epoxy coating ensures extra long life.



MODEL NO.	FLOW (MAX) GPM	GRATE FREE AREA SQ. IN.	NO. OF GRATES	A	B	C	D	E	F	LIQUID HOLDING CAP.		SHIPPING WEIGHT (lbs.)	WEIGHT WHEN FILLED WITH WATER (lbs.)
										U.S.G.	CU. FT.		
MI-SI-1	20	188	2	24"	24"	12"	26"	38"	4"	60	8	133	221
MI-SI-2	50	368	4	48"	24"	12"	26"	38"	4"	120	16	204	594
MI-SI-3	150	752	8	48"	48"	12"	38"	50"	4"	360	48.1	368	1020
MI-SI-4	250	1128	12	72"	48"	12"	39"	51"	6"	540	72.1	1294	1334
MI-SI-5	500	1880	20	120"	48"	12"	51"	63"	6"	1200	160.5	2204	1600

Note: Reduce the "A" and "B" dimensions by 1" (25) to determine the actual body length and width dimensions. The lid overhangs the body by 1/2" (13) on all four sides.

SUFFIX	OPTIONAL VARIATIONS
-3	Stainless steel grate (vener)
-AP	Anode pack
-BA	Minimum 51% material cost made in the USA
-C	Extension "C" as required
-FL	Anchor flange
-FLM	Anchor flange and membrane clamp

-SC	Solid Cover
-SS	Stainless steel body
-T	F.I.P. female threaded inlet and outlet
specify	Special size inlet and outlet

CALIFORNIA PROPOSITION 65 WARNING. This product contains chemicals known to the State of California to cause cancer and birth defects or other reproductive harm.

Job Name: _____ Page No: _____
 Section No: _____ Contractor: _____
 Schedule No: _____ Purchase Order No: _____