

Location: _____

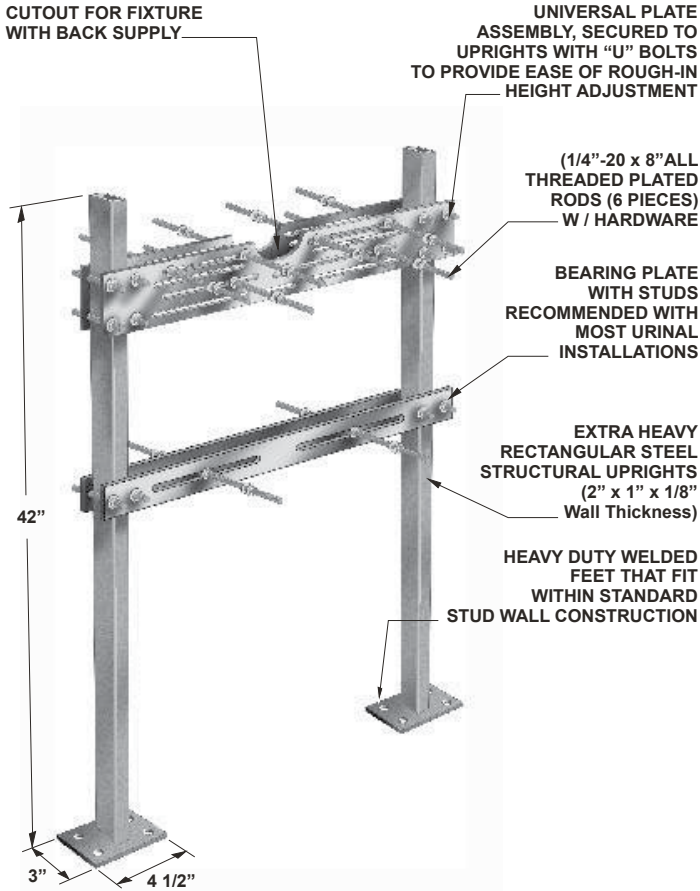


MC-32D

BACK TO BACK HANGER PLATE CARRIER WITH BEARING PLATES AND TWO UPRIGHTS

Specification: MIFAB® Series MC-32D hanger plate carrier with universal, adjustable, top support plates and bottom bearing plates. Complete with lacquered 2" x 1" x 1/8" thick structural steel uprights with 3" x 4 1/2" welded steel feet and mounting hardware.

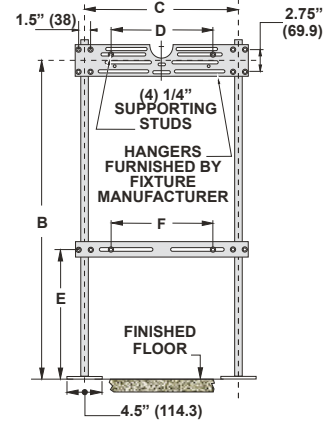
Function: Used to support back to back wall-hung fixtures such as urinals and water coolers that are independent of the wall. Bottom bearing plate provides extra support for the fixture. Designed for use in conjunction with the fixture hanger plate supplied by the fixture manufacturer.



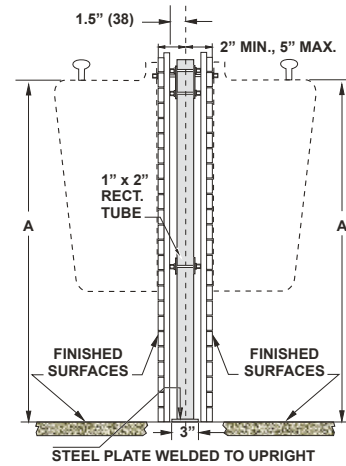
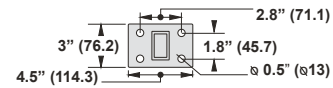
MC-32D Series Meets ANSI/ASME fixture carrier standard A112.6.1M-97

NOTE: FOOT SUPPORTS SHOULD BE SECURELY ANCHORED TO FLOOR WITH 1/2" (13) BOLTS AND ANCHORS BY OTHERS.

Note: See the various fixture dimensional rough-in guides on the www.mifab.com website.



BASE DETAIL



SUFFIX	OPTIONAL VARIATIONS
-A	Stud length over 8" (specify)
-B	Floor to ceiling uprights
-BA	Minimum 51% material cost made in the USA
-C	Two hanger plates (three uprights for corner mounted lavatory)
-HDH	Heavy duty hanger
-PA	Pennsylvania Steel Act compliant product
-PFAB	Prefabricated carrier
-20	Flush valve support

CALIFORNIA PROPOSITION 65 WARNING. This product contains chemicals known to the State of California to cause cancer and birth defects or other reproductive harm.

Job Name: _____ Page No: _____

Section No: _____ Contractor: _____

Schedule No: _____ Purchase Order No: _____