

Location: _____

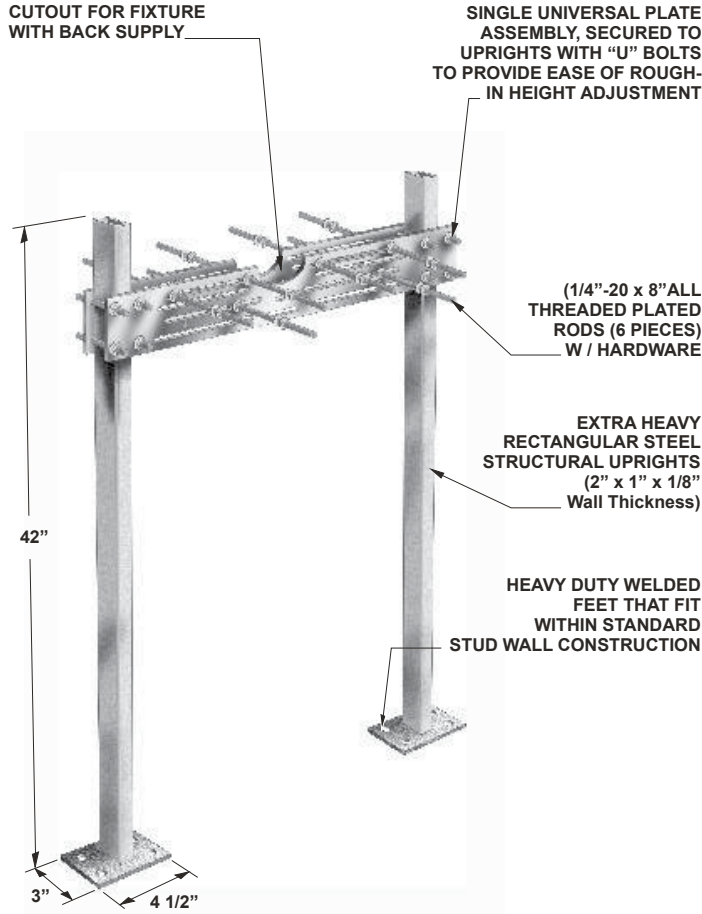


MC-31D

BACK TO BACK SINGLE HANGER PLATE CARRIER WITH TWO UPRIGHTS

Specification: MIFAB® Series MC-31D back to back, lavatory hanger plate carrier with universal, adjustable, top support plates. Complete with lacquered 2" x 1" x 1/8" thick structural steel uprights with 3" x 4 1/2" welded steel feet and mounting hardware.

Function: Used to support back to back wall-hung fixtures such as urinals and water coolers that are independent of the wall. Designed for use in conjunction with the fixture hanger plate supplied by the fixture manufacturer.



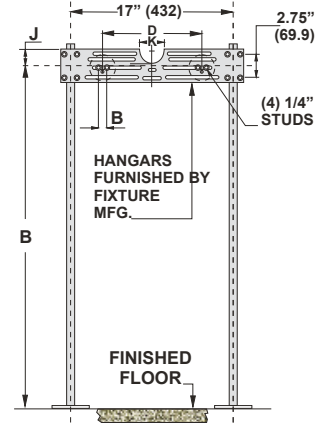
42"

3" 4 1/2"

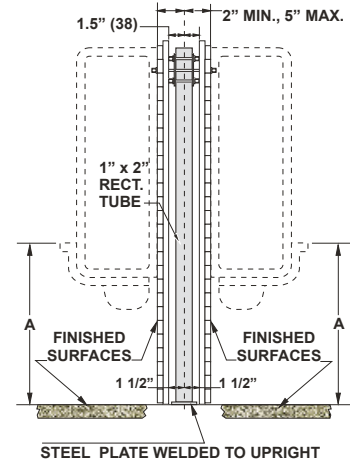
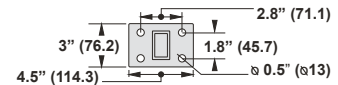
MC-31D Series Meets ANSI/ASME fixture carrier standard A112.6.1M-97

NOTE: FOOT SUPPORTS SHOULD BE SECURELY ANCHORED TO FLOOR WITH 1/2" (13) BOLTS AND ANCHORS BY OTHERS.

Note: See the various fixture dimensional rough-in guides on the www.mifab.com website.



BASE DETAIL



SUFFIX	OPTIONAL VARIATIONS
-A	Stud length over 8" (specify)
-B	Floor to ceiling uprights
-BA	Minimum 51% material cost made in the USA
-HDH	Heavy duty hanger
-PA	Pennsylvania Steel Act compliant product
-PFAB	Prefabricated carrier
-20	Flush valve support

CALIFORNIA PROPOSITION 65 WARNING. This product contains chemicals known to the State of California to cause cancer and birth defects or other reproductive harm.

Job Name: _____ Page No: _____
 Section No: _____ Contractor: _____
 Schedule No: _____ Purchase Order No: _____

MIFAB® reserves the right to make changes in material and design without formal notice and obligation.

USA: 1-800-465-2736 www.mifab.com CAN: 1-800-387-3880