

Location: _____

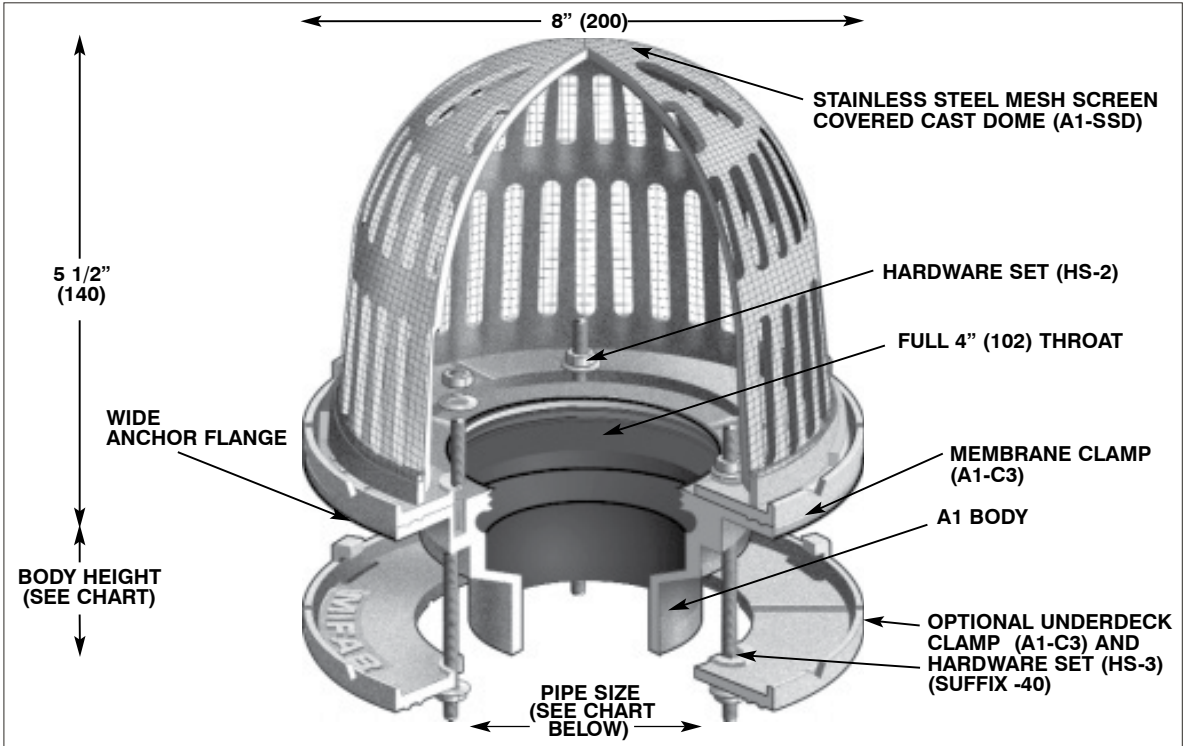


F1810

PLANTING AREA DRAIN

Specification: MIFAB® Series F1810 lacquered cast iron planting area drain with anchor flange, cast iron waterproofing membrane clamp ring, and standard self-locking cast dome strainer with stainless steel mesh screen.

Function: Used in areas such as flower boxes and others where the drain is buried underground. The stainless steel mesh screen covered dome prevents fines from entering the drain line. Membrane clamp is provided to secure the waterproofing membrane.



PARTS:



A1 BODY



A1-SSD



A1-C3



HS-1

F1810 Series meets ANSI/ASME floor drain standard A112.6.3-2001

Deck opening - 6 3/8" (162)
With sump receiver - 8" (203)

PIPE SIZE	BODY HEIGHT				
	NO HUB (STANDARD)	PUSH ON (P)	THREADED (T)	INSIDE CAULK (X)	PVC/ABS (-30)/(-31)
2" (51)	3" (76)	3 3/8" (86)	2 1/4" (57)	3 3/4" (95)	2 15/16" (75)
3" (76)	3" (76)	3 3/8" (86)	2 5/8" (67)	3 3/4" (95)	3 3/4" (95)
4" (102)	3" (76)	3 3/8" (86)	2 5/8" (67)	3 3/4" (95)	3 3/4" (95)
5" (127)	3" (76)	—	2 5/8" (67)	3 3/4" (95)	—
6" (152)	3 1/4" (83)	6 1/2" (165)	—	—	—

SUFFIX	OPTIONAL VARIATIONS
-6	Security screws (T-20 Torx & pin)
-11	Acid resistant epoxy coated body
-13	Galvanized body
-28	Stainless steel body and grate (Type 304)
-30	PVC socket connection body
-31	ABS socket connection body
-40	Underdeck clamp
-41	Sump receiver
-81	Rough bronze dome with S.S. mesh

SUFFIX	OPTIONAL VARIATIONS
-90	Threaded side outlet (2", 3", 4")
-90NH	No hub side outlet (2", 3", 4")
-BA	Minimum 51% material cost made in the USA
(Standard)	No hub outlet
-MG	MI-GARD Floor Drain Trap Sealer (2", 3" or 4")
-P	Push on outlet
-PA	Pennsylvania Steel Act compliant product
-T	Threaded outlet (2", 3", 4")
-X	Inside caulk outlet

Job Name: _____ Page No: _____
 Section No: _____ Contractor: _____
 Schedule No: _____ Purchase Order No: _____