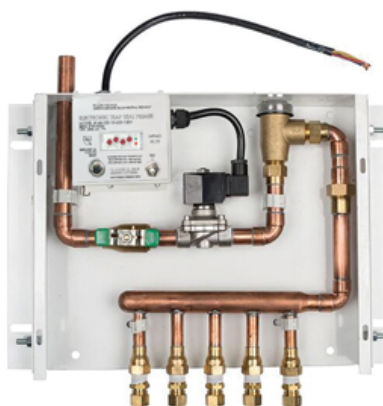




MI-100, MI-200, MI-300

ELECTRONIC TRAP SEAL PRIMER

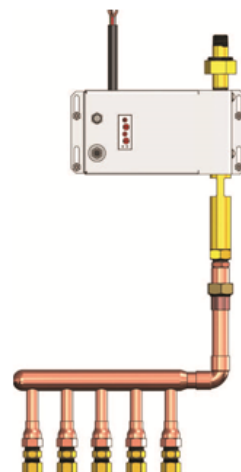
INSTALLATION, OPERATION AND MAINTENANCE INSTRUCTIONS



MI-100



MI-200



MI-300

Installation Instructions

All MIFAB Electronic Trap Seal Primers should be electrically wired and plumbed in accordance with local codes. For all plumbing connections, the use of pipe dope or paste is prohibited and will void any warranty. Use only thread tape for local connections, as paste will gum the solenoid valve and distribution system. On new construction, a thorough flushing of the water lines of all sediment is required.

Operating Temperature Range: 35°F to 140°F

Inlet Water Pressure: 25 PSI to 125PSI

Note: MIFAB recommends a water hammer arrestor installed (by others) on the incoming water supply line- to reduce water hammer issues.

Inlet Connection: Standard models are equipped with a 1/2" copper sweat connection. Special order models may have a different type of inlet connection. Proper connection procedures should be followed for the type of connection that is installed.

Outlet Connection: Standard models are equipped with a 1/2" or 5/8" compression connection. Special order models may have a different type of outlet connection. Proper connection procedures should be followed for the type of connection that is installed. All unused connections should be plugged.

Mounting: The Assembly should be securely mounted to framing that is specifically intended to properly support these units. The specific method of attachment is dependent on the structure and local code requirements. The top and bottom cabinet surfaces should be free of framing to allow for electrical and water distribution piping.

Operation Instructions

Once the unit is properly installed,

- Turn the water valve on.
- Push the Reset button to prime the system.
- Make sure water has reached all drains, and that the traps are full of water.
- Check for leaks in the installation.

Maintenance Instructions

Inspect the Electronic Trap Seal Primer periodically for proper function. Use the Reset button on the control box to manually prime the unit and ensure the solenoid valve is operating. Visually check the unit connections for water tightness. Be sure to shut off the water supply and disconnect the primary power prior to performing any service to the unit.