

Location: \_\_\_\_\_



**CXW**

## WIDEBODY RUBBER SUPPORT

- Economical support for heavy conduit, pipe, and equipment
- Versatile, ideal for hundreds of applications
- Built to last — UV resistant for tough outdoor conditions
- Designed for heavy-duty rooftop applications
- Suitable for most types of roofing materials and flat surfaces
- Accepts screw fasteners for 1-hole or 2-hole straps/clamps (straps and clamps are not included)

**LIMITED  
LIFETIME WARRANTY**

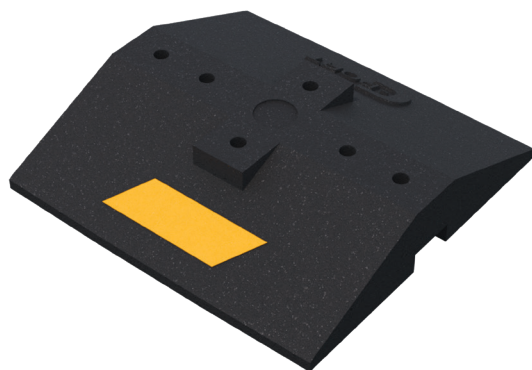
**MAY QUALIFY FOR  
L.E.E.D CREDITS**

**RECOMMENDED SPACING:  
REFER TO LOCAL CODE**

**Function:** The CXW Series is designed for superior support of gas and refrigeration piping systems, cable tray, electrical conduit, multiple lines, HVAC equipment and many other applications. The wide body of the base gives this support series superior stability and load bearing capability. It is suitable for most types of roofing material or other flat surfaces. Strut and clamps by others.



CONSULT WITH A ROOFING CONSULTANT  
FOR ALLOWABLE LOADS.



### Optional variations

EDPM (18" x 18")	EDPM (16" x 12")
TPO (18" x 18")	TPO (16" x 12")
PVC (18" x 18")	PVC (16" x 12")

(see slipsheet page below)

SCAN FOR V-SPEC  
VIDEO SPECIFICATION

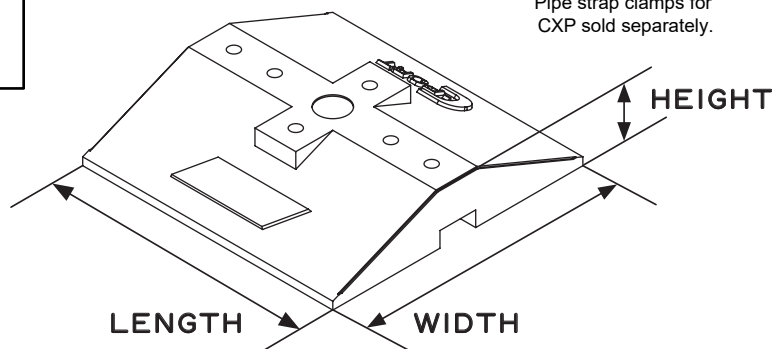


Pipe strap clamps for  
CXW sold separately.

### MATERIALS

**BASE:**  
**100% RECYCLED RUBBER**  
**UV RESISTANT**

**Note:** All measurements may vary by +/- 3%



MODEL NO.	HEIGHT	WIDTH	LENGTH (L)	WEIGHT	MAX. LOAD
<b>CXW12</b>	2.5" (64 mm)	12" (305 mm)	12" (305)	9.56 lbs.	<b>1000 lbs. per 12" Length</b>
<b>CXW24</b>	2.5" (64 mm)	12" (305 mm)	24" (610)	19.12 lbs.	
<b>CXW36</b>	2.5" (64 mm)	12" (305 mm)	36" (914)	28.68 lbs.	
<b>CXW48</b>	2.5" (64 mm)	12" (305 mm)	12" (305)	9.56 lbs.	
<b>CXW60</b>	2.5" (64 mm)	12" (305 mm)	24" (610)	19.12 lbs.	
<b>CXW72</b>	2.5" (64 mm)	12" (305 mm)	36" (914)	28.68 lbs.	

CALIFORNIA PROPOSITION 65 WARNING. This product contains chemicals known to the State of California to cause cancer and birth defects or other reproductive harm.

Job Name: \_\_\_\_\_

Page No: \_\_\_\_\_

Section No: \_\_\_\_\_

Contractor: \_\_\_\_\_

Schedule No: \_\_\_\_\_

Purchase Order No: \_\_\_\_\_

Location: \_\_\_\_\_



**C-PORT SLIPSHEETS**

**WIDEBODY RUBBER SUPPORT**

- Creates a barrier between roof membrane and rooftop support
- Available in 0.06" thickness —
- EPDM - Ethylene Propylene Diene Terpolymer
- TPO - Thermoplastic Polyolefin
- PVC - Polyvinyl Chloride
- Can be mechanically fastened to CXW, CXM, and CXH bases
- Fits under all C-Port rubber bases and can be slipped under without fastening
- Custom sizes available based on job requirements



CONSULT WITH A ROOFING CONSULTANT  
FOR ALLOWABLE LOADS.

**LIMITED  
LIFETIME WARRANTY**

**MAY QUALIFY FOR  
L.E.E.D CREDITS**

**RECOMMENDED SPACING:  
REFER TO LOCAL CODE**



**MADE WITH  
100%  
RECYCLED RUBBER**

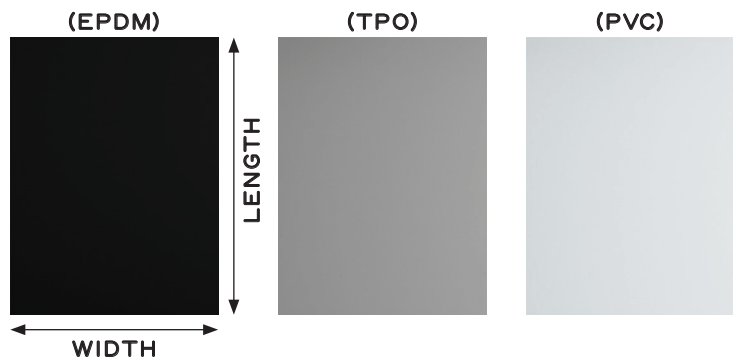


## **MATERIALS**

**SLIPSHEET (EPDM):**  
100% Ethylene Propylene Diene Terpolymer

**SLIPSHEET (TPO):**  
100% Thermoplastic Polyolefin

**SLIPSHEET (PVC):**  
100% Polyvinyl Chloride



SCAN FOR V-SPEC  
VIDEO SPECIFICATION



SKU	THICKNESS	WIDTH	LENGTH
SLIPSHEET (EPDM, TPO, PVC)	0.06"	18" (457MM)	18" (457MM)
SLIPSHEET (EPDM, TPO, PVC)	0.06"	12" (305MM)	16" (406MM)

CALIFORNIA PROPOSITION 65 WARNING. This product contains chemicals known to the State of California to cause cancer and birth defects or other reproductive harm.

Job Name: \_\_\_\_\_

Page No: \_\_\_\_\_

Section No: \_\_\_\_\_

Contractor: \_\_\_\_\_

Schedule No: \_\_\_\_\_

Purchase Order No: \_\_\_\_\_