

Location: _____



CXP

RUBBER SUPPORT SERIES

- Economical support for all types of conduit, pipes, and more
- Versatile, ideal for hundreds of applications
- Built to last — UV resistant for tough outdoor conditions
- Suitable for most types of roofing materials and flat surfaces
- Accepts screw fasteners for straps or clamps (not included)

Function: The CXP Series supports provide an economic alternative. They are ideal for supporting conduit or pipe. Strut and clamps by others.



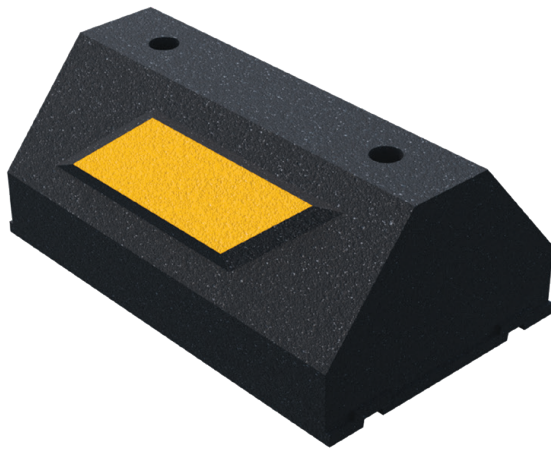
CONSULT WITH A ROOFING CONSULTANT
FOR ALLOWABLE LOADS.

U.S. Patent
No. 7,866,093

**LIMITED
LIFETIME WARRANTY**

**MAY QUALIFY FOR
L.E.E.D CREDITS**

**RECOMMENDED SPACING:
REFER TO LOCAL CODE**



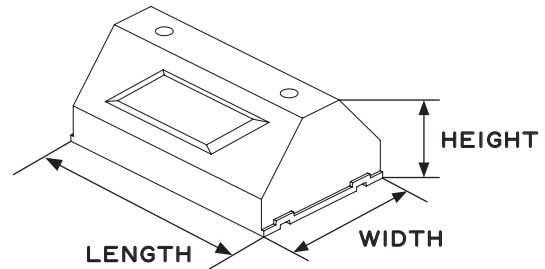
SCAN FOR V-SPEC
VIDEO SPECIFICATION



Pipe strap clamps for CXP
sold separately.

MATERIALS

BASE:
100% RECYCLED RUBBER
UV RESISTANT



Note: All measurements may vary by +/- 3%

MODEL NO.	HEIGHT (H)	WIDTH (W)	LENGTH (L)	WEIGHT	MAX. LOAD
CXP	4" (102 mm)	6" (152 mm)	9.5" (241 mm)	4.8 lbs.	500 lbs.
CXP-2	4" (102 mm)	6" (152 mm)	19.3" (490 mm)	9.7 lbs.	PER 9.5" LENGTH

CALIFORNIA PROPOSITION 65 WARNING. This product contains chemicals known to the State of California to cause cancer and birth defects or other reproductive harm.

Job Name: _____

Page No: _____

Section No: _____

Contractor: _____

Schedule No: _____

Purchase Order No: _____