

Location: \_\_\_\_\_



**CXH**

**SMALL RUBBER SUPPORT SERIES**

- Smallest and most economical C-Port rubber base
- Designed to support conduit and small piping
- Ideal for solar, telecom, and more
- Built to last — UV resistant for tough outdoor conditions
- Non-penetrating rooftop support
- Engineered to last longer than the roof

**LIMITED  
LIFETIME WARRANTY**

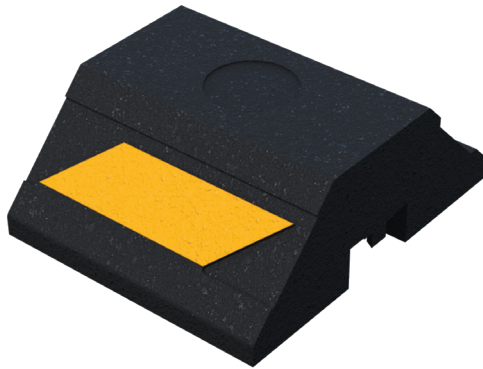
**MAY QUALIFY FOR  
L.E.E.D CREDITS**

**RECOMMENDED SPACING:  
REFER TO LOCAL CODE**

**Function:** The CXH Series provide an economic alternative. They are ideal for supporting conduit or smaller pipe.



CONSULT WITH A ROOFING CONSULTANT  
FOR ALLOWABLE LOADS.



Optional variations	
EDPM (18" x 18")	EDPM (16" x 12")
TPO (18" x 18")	TPO (16" x 12")
PVC (18" x 18")	PVC (16" x 12")

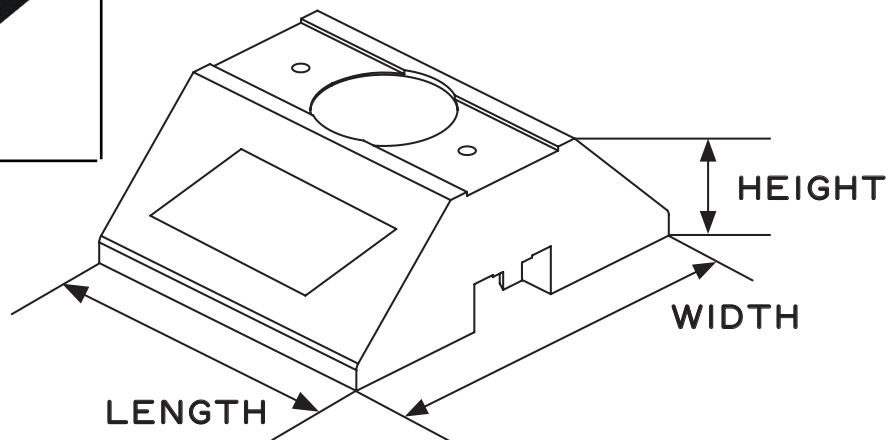
(see slipsheet page below)

SCAN FOR V-SPEC  
VIDEO SPECIFICATION



**MATERIALS**

**BASE:**  
100% RECYCLED RUBBER  
UV RESISTANT



MODEL NO.	HEIGHT (H)	WIDTH (W)	LENGTH (L)	WEIGHT	MAX. LOAD
CXH	2.3" (58 mm)	6" (152 mm)	5" (127 mm)	1.9 lbs.	300 lbs.

**Note:** All measurements may vary by +/- 3%

CALIFORNIA PROPOSITION 65 WARNING. This product contains chemicals known to the State of California to cause cancer and birth defects or other reproductive harm.

Job Name: \_\_\_\_\_ Page No: \_\_\_\_\_  
Section No: \_\_\_\_\_ Contractor: \_\_\_\_\_  
Schedule No: \_\_\_\_\_ Purchase Order No: \_\_\_\_\_

Location: \_\_\_\_\_



**C-PORT SLIPSHEETS**

**WIDEBODY RUBBER SUPPORT**

- Creates a barrier between roof membrane and rooftop support
- Available in 0.06" thickness —
- EPDM - Ethylene Propylene Diene Terpolymer
- TPO - Thermoplastic Polyolefin
- PVC - Polyvinyl Chloride
- Can be mechanically fastened to CXW, CXM, and CXH bases
- Fits under all C-Port rubber bases and can be slipped under without fastening
- Custom sizes available based on job requirements



CONSULT WITH A ROOFING CONSULTANT  
FOR ALLOWABLE LOADS.

**LIMITED  
LIFETIME WARRANTY**

**MAY QUALIFY FOR  
L.E.E.D CREDITS**

**RECOMMENDED SPACING:  
REFER TO LOCAL CODE**



**MADE WITH  
100%  
RECYCLED RUBBER**

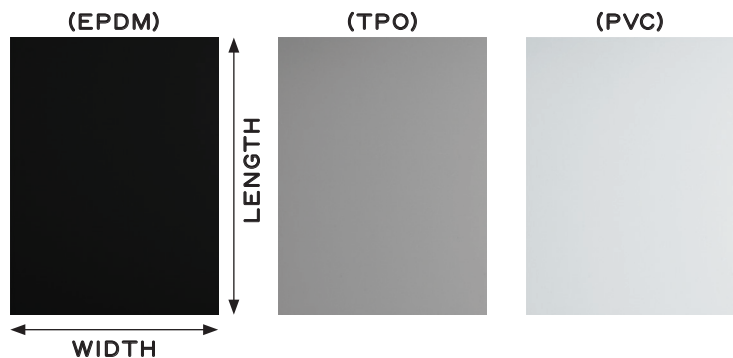


## **MATERIALS**

**SLIPSHEET (EPDM):**  
100% Ethylene Propylene Diene Terpolymer

**SLIPSHEET (TPO):**  
100% Thermoplastic Polyolefin

**SLIPSHEET (PVC):**  
100% Polyvinyl Chloride



SCAN FOR V-SPEC  
VIDEO SPECIFICATION



SKU	THICKNESS	WIDTH	LENGTH
SLIPSHEET (EPDM, TPO, PVC)	0.06"	18" (457MM)	18" (457MM)
SLIPSHEET (EPDM, TPO, PVC)	0.06"	12" (305MM)	16" (406MM)

CALIFORNIA PROPOSITION 65 WARNING. This product contains chemicals known to the State of California to cause cancer and birth defects or other reproductive harm.

Job Name: \_\_\_\_\_

Page No: \_\_\_\_\_

Section No: \_\_\_\_\_

Contractor: \_\_\_\_\_

Schedule No: \_\_\_\_\_

Purchase Order No: \_\_\_\_\_