

Location: _____



CW

**WIDEBODY SERIES WITH
1 5/8" X 13/16" GALVANIZED CHANNEL**

- CW Channel Support Series
- Added stability and load capacity over C Series
- Designed for gas and refrigeration piping
- Compatible with cable trays, electrical conduit, and multiple lines
- Ideal for HVAC equipment and a wide range of other applications
- Strut is available in corrosion-resistant galvanized steel, stainless steel, or aluminum

**LIMITED
LIFETIME WARRANTY**

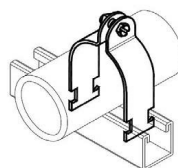
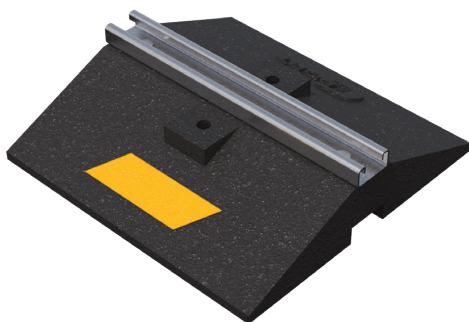
**MAY QUALIFY FOR
L.E.E.D CREDITS**

**RECOMMENDED SPACING:
REFER TO LOCAL CODE**

Function: The CW Series is designed for superior support of gas and refrigeration piping systems, cable tray, electrical conduit, multiple lines, HVAC equipment and many other applications. The wide body of the base gives this support series superior stability and load-bearing capability. It is suitable for most types of roofing material or other flat surfaces.



CONSULT WITH A ROOFING CONSULTANT
FOR ALLOWABLE LOADS.



Strut Clamps sold separately.

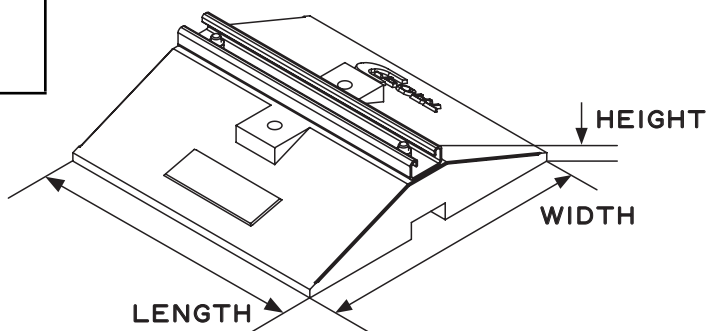
SCAN FOR V-SPEC
VIDEO SPECIFICATION



MATERIALS

**BASE (C-PORT CXW12):
100% RECYCLED RUBBER, UV RESISTANT**

**STRUT:
14-GAUGE GALVANIZED STEEL STRUT
(13/16" HIGH)**



MODEL NO.	HEIGHT	WIDTH (W)	LENGTH (L)	WEIGHT	MAX. LOAD
CW12	3.3" (84 mm)	12" (305)	12" (305)	10.4 lbs.	1400 lbs. per 12" LENGTH
CW24	3.3" (84 mm)	12" (305)	24" (610)	20.6 lbs.	
CW36	3.3" (84 mm)	12" (305)	36" (914)	31.3 lbs.	
CW48	3.3" (84 mm)	12" (305)	48" (1219)	41.2 lbs.	
CW60	3.3" (84 mm)	12" (305)	60" (1524)	51.5 lbs.	
CW72	3.3" (84 mm)	12" (305)	72" (1829)	61.8 lbs.	

Note: All measurements may vary by +/- 3%

CALIFORNIA PROPOSITION 65 WARNING. This product contains chemicals known to the State of California to cause cancer and birth defects or other reproductive harm.

Job Name: _____
Section No: _____
Schedule No: _____

Page No: _____
Contractor: _____
Purchase Order No: _____