

Location: _____



CR

ROLLER SERIES, REGULAR BASE

- CR Roller Support Series
- Height to roller centre adjustable from 6" to 7"
- Supports gas and refrigeration piping
- Allows for small longitudinal pipe movements
- Suitable for most types of roofing materials and flat surfaces

**LIMITED
LIFETIME WARRANTY**

**MAY QUALIFY FOR
L.E.E.D CREDITS**

**RECOMMENDED SPACING:
REFER TO LOCAL CODE**

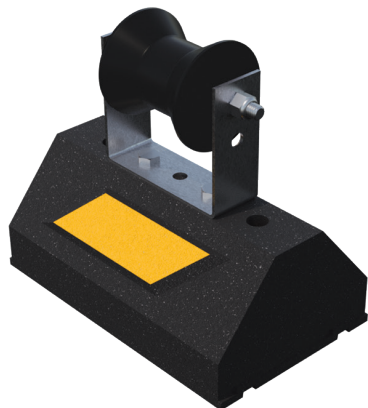
Function: The CR Series is designed for superior support of gas and refrigeration pipes. The roller allows for longitudinal movements of the pipe. This support is suitable for most types of roofing material or other flat surfaces. The roller bracket has roller mounting holes 1" apart so that the roller can be adjusted from 6 or 7" from the centerline to the ground.



CONSULT WITH A ROOFING CONSULTANT
FOR ALLOWABLE LOADS.



PATENT
PENDING



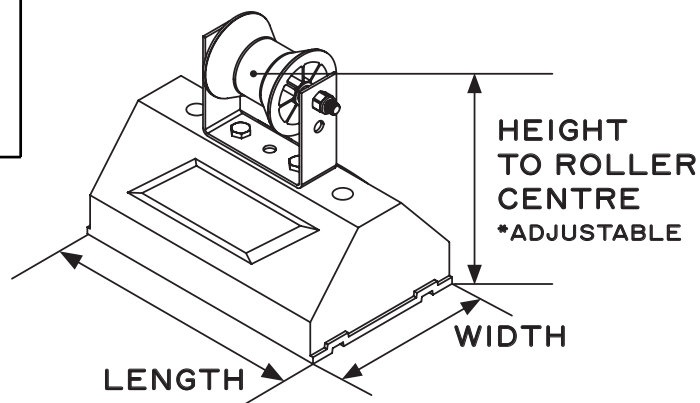
SCAN FOR V-SPEC
VIDEO SPECIFICATION



MATERIALS

BASE (C-PORT CXP):
100% RECYCLED RUBBER, UV RESISTANT

ROLLER:
TPO (THERMOPLASTIC POLYOLEFIN)



MODEL NO.	PIPE SIZE	MAX. HEIGHT TO ROLLER	WIDTH	WEIGHT	MAX. LOAD
CR10-3	UP TO 3"	36" (914 mm)	6" (152 mm)	5.9 lbs.	500 lbs.
CR10-4	3" TO 4"	48" (1219 mm)	6" (152 mm)	6.2 lbs.	500 lbs.

Note: All measurements may vary by +/- 3%

CALIFORNIA PROPOSITION 65 WARNING. This product contains chemicals known to the State of California to cause cancer and birth defects or other reproductive harm.

Job Name: _____

Page No: _____

Section No: _____

Contractor: _____

Schedule No: _____

Purchase Order No: _____