

Location: _____



CP

PLATFORM SERIES

- CP Platform Series
- Non-penetrating, bring-to-level rooftop support
- Levels platforms on sloped surfaces
- Free-flow legs allow water drainage
- Brackets easily adjust to fit various equipment types
- Reliable support for HVAC and electrical equipment
- Prevents moss and mold growth; adjustable and easy to install
- Strut is available in corrosion-resistant galvanized steel, stainless steel, or aluminum

Function: The CP Series is designed as a non-penetrating lightweight to bring to level platform surface. It is used for air conditioning, air condensing units, HVAC, and other electrical units. Free-flow leg system allows water passage. Other features include: prohibits moss and mold growth, easy to install, easy movement brackets that are suitable for all types of equipment, and adjustable. Consult roofing manufacturer or engineer for roof loading.

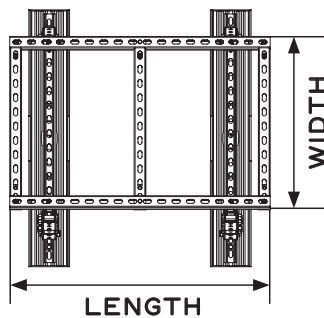
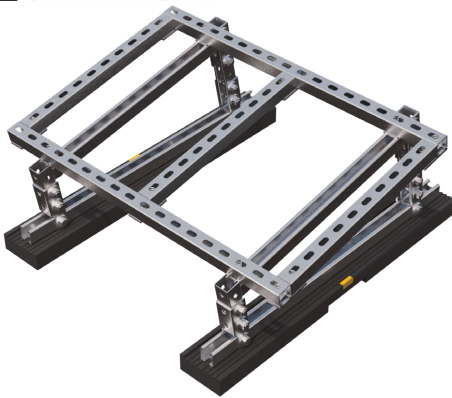
**LIMITED
LIFETIME WARRANTY**

**MAY QUALIFY FOR
L.E.E.D CREDITS**

**RECOMMENDED SPACING:
REFER TO LOCAL CODE**



CONSULT WITH A ROOFING CONSULTANT
FOR ALLOWABLE LOADS.



SCAN FOR V-SPEC
VIDEO SPECIFICATION



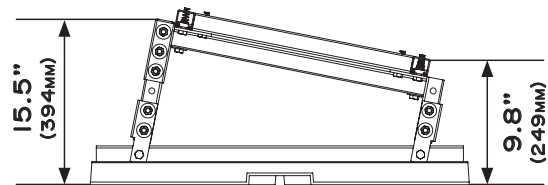
MATERIALS

BASE (C-PORT AP36):
100% RECYCLED RUBBER
UV RESISTANT

STRUT:
12-GAUGE GALVANIZED STEEL
STRUT (1 5/8" HIGH)

PLATFORM:
GALVANIZED STEEL

HEIGHT AT
HIGHEST POINT



HEIGHT AT
LOWEST POINT

MODEL NO.	WIDTH	HEIGHT	NO. OF BASES	WEIGHT	MAX. UNIFORM LOAD
CP36-2436	24" (610 mm)	36" (914 mm)	2	84.2 lbs.	2000 lbs.
CP36-2448	24" (610 mm)	48" (1219 mm)	3	117.8 lbs.	3000 lbs.
CP36-2472	24" (610 mm)	72" (1829 mm)	3	125 lbs.	3000 lbs.

Note: All measurements may vary by +/- 3%

CALIFORNIA PROPOSITION 65 WARNING. This product contains chemicals known to the State of California to cause cancer and birth defects or other reproductive harm.

Job Name: _____

Page No: _____

Section No: _____

Contractor: _____

Schedule No: _____

Purchase Order No: _____