

Location: _____



CH5

CHANNEL SUPPORT SERIES

- CH5 Channel Support Series
- Smallest and most economical C-Port strut channel support
- Designed for smaller pipes and conduits
- Versatile for a wide range of line applications
- Strut is available in corrosion-resistant galvanized steel, stainless steel, or aluminum

**LIMITED
LIFETIME WARRANTY**

**MAY QUALIFY FOR
L.E.E.D CREDITS**

**RECOMMENDED SPACING:
REFER TO LOCAL CODE**

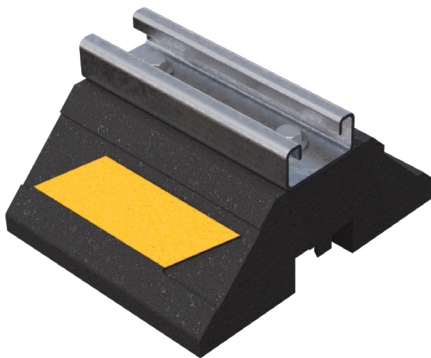
Function: The CH5 Series is designed for extended support of gas and refrigeration piping systems, cable tray, electrical conduit, multiple lines, HVAC equipment and many other applications. The wide-bodied base provides additional stability. It is suitable for most types of roofing material or other flat surfaces.



CONSULT WITH A ROOFING CONSULTANT
FOR ALLOWABLE LOADS.



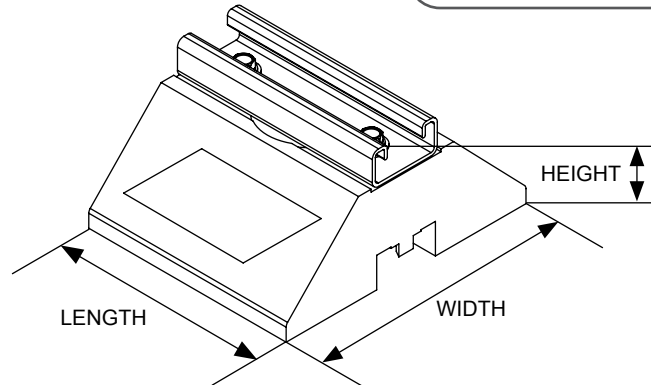
**MADE WITH
100%
RECYCLED RUBBER**



MATERIALS

BASE (C-PORT CXH):
100% RECYCLED RUBBER, UV RESISTANT

STRUT:
14-GAUGE GALVANIZED STEEL STRUT
(13/16" HIGH)



SCAN FOR V-SPEC
VIDEO SPECIFICATION



Model No. (SKU)	HEIGHT	WIDTH	LENGTH	WEIGHT	MAX. UNIFORM LOAD
CH5	3" (76mm)	6" (152mm)	5" (127mm)	2.3 LBS	300 LBS

Note: Exact measurements can range +/- 3%

Uprights are not included. Strut can be cut to suit job site.
Channel also available in corrosion resistant stainless steel or aluminum.

CALIFORNIA PROPOSITION 65 WARNING. This product contains chemicals known to the State of California to cause cancer and birth defects or other reproductive harm.

Job Name: _____

Page No: _____

Section No: _____

Contractor: _____

Schedule No: _____

Purchase Order No: _____