

Location: _____



CGW

WIDEBODY GASKET SERIES

- CGW Gasket Slipsheet Series
- Superior stability and load-bearing capacity
- Slipsheets are available in EPDM, PVC, AND, TPO (See below)
- Can be glued to the roof; mat adds extra protection
- Supports gas piping, conduit, cable tray, and HVAC equipment
- Suitable for a wide range of rooftop applications
- Strut is available in corrosion-resistant galvanized steel, stainless steel, or aluminum

PATENT
PENDING

LIMITED
LIFETIME WARRANTY

MAY QUALIFY FOR
L.E.E.D CREDITS

RECOMMENDED SPACING:
REFER TO LOCAL CODE

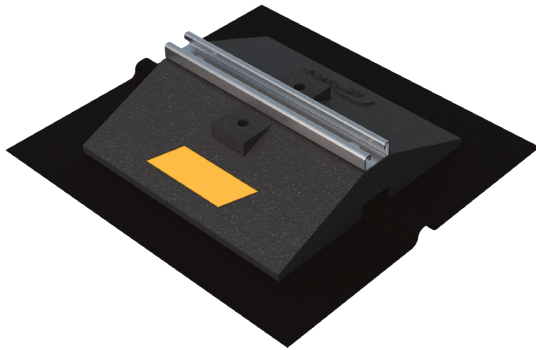
Function: The CGW Series channel support is designed for superior support of gas and refrigeration piping systems, cable trays, electrical conduit, multiple lines, HVAC equipment and many other applications. The wide body of the base gives this support series superior stability and load-bearing capacity. The Gasket Series can be glued down to the roof, and the (EPDM or TPO) gasket provides an extra protective barrier between the rubber base and roof surface.



CONSULT WITH A ROOFING CONSULTANT
FOR ALLOWABLE LOADS.



MADE WITH
100%
RECYCLED RUBBER

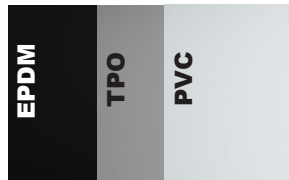


MATERIALS

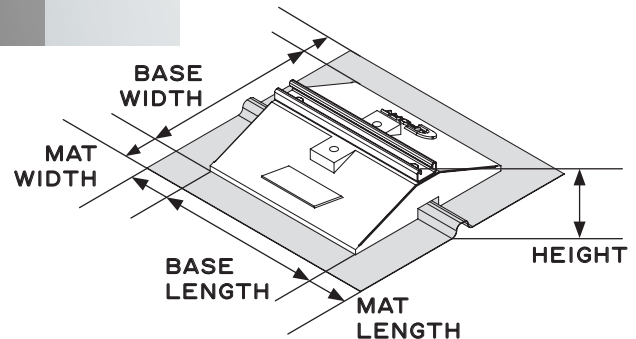
SLIPSHEET (EPDM):
100% Ethylene Propylene Diene Terpolymer

SLIPSHEET (TPO):
100% Thermoplastic Polyolefin

SLIPSHEET (PVC):
100% Polyvinyl Chloride



SCAN FOR V-SPEC
VIDEO SPECIFICATION



Note: All measurements may vary by +/- 3%

MATERIALS

BASE (C-PORT CXW):
100% RECYCLED RUBBER, UV RESISTANT

STRUT:
14-GAUGE GALVANIZED STEEL STRUT
(13/16" HIGH)

SLIPSHEET:
EPDM, TPO, PVC

MODEL NO.	HEIGHT	BASE WIDTH	BASE LENGTH	MAT WIDTH	MAT LENGTH	WEIGHT
CGW-12	3.3" (84 mm)	12" (305 mm)	12" (305 mm)	17" (432 mm)	18" (457 mm)	10.8 lbs.
CGW-24	3.3" (84 mm)	12" (305 mm)	24" (610 mm)	17" (432 mm)	30" (762 mm)	21.4 lbs.
CGW-36	3.3" (84 mm)	12" (305 mm)	36" (914 mm)	17" (432 mm)	42" (1067 mm)	32 lbs.
CGW-48	3.3" (84 mm)	12" (305 mm)	48" (1219 mm)	17" (432 mm)	54" (1372 mm)	42.7 lbs.

CGW12-E	CGW12-T	CGW12-P
CGW24-E	CGW24-T	CGW24-P
CGW36-E	CGW36-T	CGW36-P
CGW48-E	CGW48-T	CGW48-P

CALIFORNIA PROPOSITION 65 WARNING. This product contains chemicals known to the State of California to cause cancer and birth defects or other reproductive harm.

Job Name: _____ Page No: _____
Section No: _____ Contractor: _____
Schedule No: _____ Purchase Order No: _____