

Location: _____



CEW

WIDEBODY EXTENSION SERIES

- CEW Channel Support Series
- Adjustable height from 3.5" to 24"
- Ideal for sloped pipe installations
- Supports gas/refrigeration piping, conduit, and more
- Compatible with various clamps and straps (not included)
- Strut is available in corrosion-resistant galvanized steel, stainless steel, or aluminum

Function: The CEW Series is designed for extended support of gas and refrigeration piping systems, cable tray, electrical conduit, multiple lines, HVAC equipment and many other applications. The wide-bodied base provides additional stability. It is suitable for most types of roofing material or other flat surfaces.

Installation Instructions: The rubber bases can be directly placed on approved roof surfaces. Adjust the crossbeam by loosening the nuts and adjust the strut to desired height and re-tighten nuts. Space the bases according to local plumbing/gas code.

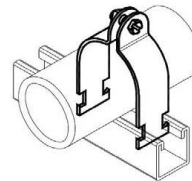
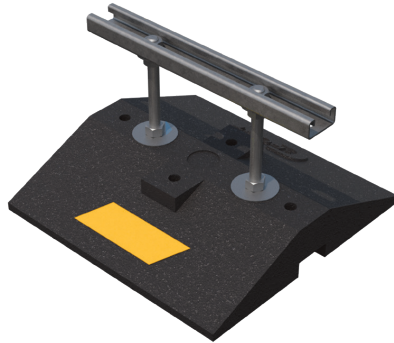


CONSULT WITH A ROOFING CONSULTANT
FOR ALLOWABLE LOADS.

**LIMITED
LIFETIME WARRANTY**

**MAY QUALIFY FOR
L.E.E.D CREDITS**

**RECOMMENDED SPACING:
REFER TO LOCAL CODE**



Strut Clamps sold separately.

**SCAN FOR V-SPEC
VIDEO SPECIFICATION**

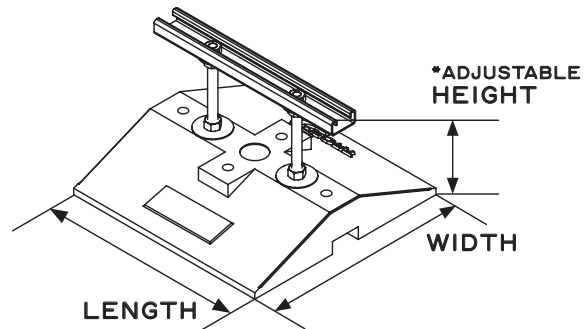


MATERIALS

BASE (C-PORT CXW12):
100% RECYCLED RUBBER
UV RESISTANT

STRUT:
14-GAUGE GALVANIZED
STEEL STRUT
(13/16" HIGH)

ROD:
TWO 1/2"-13
ZINC-PLATED
ALL-THREADED
ROD RISERS



MODEL NO.	HEIGHT (H)	WIDTH (W)	LENGTH (L)	WEIGHT	MAX. LOAD
CEW12-8	8" (203 mm)	12" (305 mm)	12" (305 mm)	10.50 lbs.	800 lbs.
CEW12-12	12" (305 mm)	12" (305 mm)	12" (305 mm)	10.90 lbs.	800 lbs.
CEW12-16	16" (406 mm)	12" (305 mm)	12" (305 mm)	11.20 lbs.	800 lbs.
CEW12-24	24" (610 mm)	12" (305 mm)	12" (305 mm)	11.45 lbs.	800 lbs.

Channel also available in corrosion resistant stainless steel or aluminum.

CALIFORNIA PROPOSITION 65 WARNING. This product contains chemicals known to the State of California to cause cancer and birth defects or other reproductive harm.

Job Name: _____

Page No: _____

Section No: _____

Contractor: _____

Schedule No: _____

Purchase Order No: _____