

Location: _____



C600

**RUBBER SUPPORT SERIES WITH
1 5/8" GALVANIZED STEEL CHANNEL**

- C600 Channel Support Series
- Additional height over the C500 Series
- Built to meet building code height requirements
- Designed for gas and refrigeration piping
- Compatible with cable trays, electrical conduit, and multiple lines
- Ideal for HVAC equipment and a wide range of other applications
- Strut is available in corrosion-resistant galvanized steel, stainless steel, or aluminum

Function: The C6 Series is designed for superior support of gas and refrigeration piping systems, cable tray, electrical conduit, multiple lines, HVAC equipment and many other applications. Both series provide additional height, beyond the capability of the original C Series. The C6 Series is applicable where building codes require pipes to be at least 6" above the roof surface.

**LIMITED
LIFETIME WARRANTY**

**MAY QUALIFY FOR
L.E.E.D CREDITS**

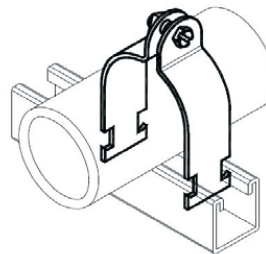
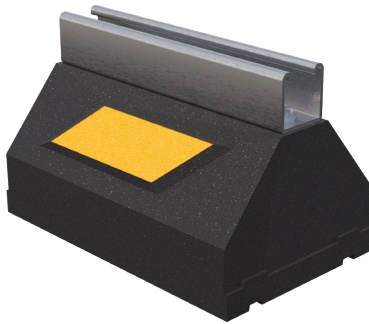
**RECOMMENDED SPACING:
REFER TO LOCAL CODE**



CONSULT WITH A ROOFING CONSULTANT
FOR ALLOWABLE LOADS.



U.S. Patent No.
7,866,093



Strut clamps sold
separately.

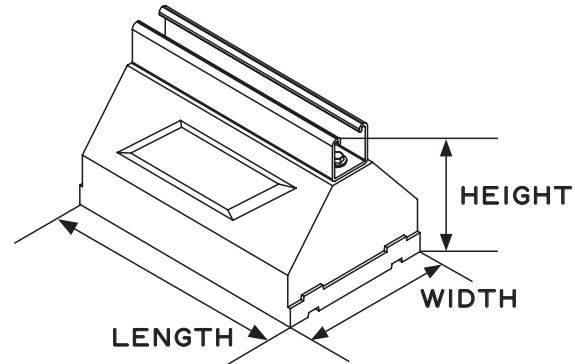
SCAN FOR V-SPEC
VIDEO SPECIFICATION



MATERIALS

**BASE (C-PORT CXP-T):
100% RECYCLED RUBBER, UV RESISTANT**

**STRUT:
12-GAUGE GALVANIZED STEEL STRUT
(1 5/8" HIGH)**



MODEL NO.	HEIGHT	WIDTH	LENGTH	WEIGHT	MAX. LOAD
C610	6.1" (155 mm)	6" (152 mm)	9.5" (241 mm)	7.2 lbs.	800 lbs. Per 9.5" Length
C620	6.1" (155 mm)	6" (152 mm)	19.3" (490 mm)	15.5 lbs.	
C630	6.1" (155 mm)	6" (152 mm)	29" (737 mm)	23.2 lbs.	
C640	6.1" (155 mm)	6" (152 mm)	38.8" (986 mm)	31 lbs.	
C648	6.1" (155 mm)	6" (152 mm)	48.5" (1232 mm)	38.9 lbs.	

Note: All measurements may vary by +/- 3%

CALIFORNIA PROPOSITION 65 WARNING. This product contains chemicals known to the State of California to cause cancer and birth defects or other reproductive harm.

Job Name: _____ Page No: _____
Section No: _____ Contractor: _____
Schedule No: _____ Purchase Order No: _____