

Location: \_\_\_\_\_



**C5**

## SMALL RUBBER SUPPORT SERIES

- C5 Channel Support Series
- Designed for smaller pipes and conduits
- Versatile for a wide range of line applications
- Strut is available in corrosion-resistant galvanized steel, stainless steel, or aluminum

**LIMITED  
LIFETIME WARRANTY**

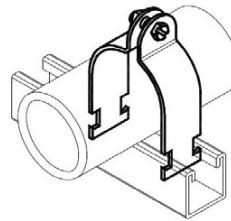
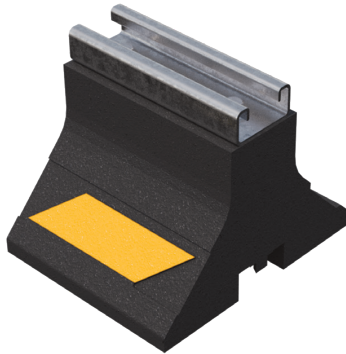
**MAY QUALIFY FOR  
L.E.E.D CREDITS**

Function: The CXM and C5 Series provide an economic alternative. They are perfect for supporting conduit or small pipe.

**RECOMMENDED SPACING:  
REFER TO LOCAL CODE**



CONSULT WITH A ROOFING CONSULTANT  
FOR ALLOWABLE LOADS.



Strut clamps sold separately.

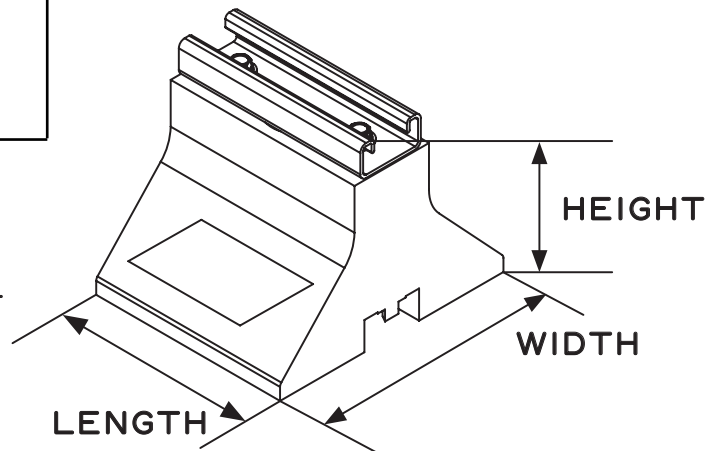
SCAN FOR V-SPEC  
VIDEO SPECIFICATION



### MATERIALS

**BASE (C-PORT CXM):**  
100% RECYCLED RUBBER, UV RESISTANT

**STRUT:**  
14-GAUGE GALVANIZED STEEL STRUT  
(13/16" HIGH)



\*H1 - Overall height is from bottom of rubber support to top of the strut

\*\*H2 - Base height is from bottom of rubber support to top of the rubber support

MODEL NO.	HEIGHT	WIDTH	LENGTH	WEIGHT	MAX. LOAD
C5	4.8" (122 mm)	6" (152 mm)	5" (127 mm)	2.8 lbs.	300 lbs.

**Note:** All measurements may vary by +/- 3%

CALIFORNIA PROPOSITION 65 WARNING. This product contains chemicals known to the State of California to cause cancer and birth defects or other reproductive harm.

Job Name: _____	Page No: _____
Section No: _____	Contractor: _____
Schedule No: _____	Purchase Order No: _____