

Location: \_\_\_\_\_



**C**

## RUBBER SUPPORT SERIES WITH 13/16" GALVANIZED STEEL CHANNEL

- C Series Channel Support
- Includes strut channel for added support
- Designed for gas and refrigeration piping
- Compatible with cable trays, electrical conduit, and multiple lines
- Ideal for HVAC equipment and a wide range of other applications
- Strut is available in corrosion-resistant galvanized steel, stainless steel, or aluminum

**Function:** C Series channel support is designed for superior support of gas and refrigeration piping systems, cable tray, electrical conduit, multiple lines, HVAC equipment and many other applications. It is UV resistant and suitable for installation on most types of roofing material or other flat surfaces. Can be used as a curb (sleeper) replacement.

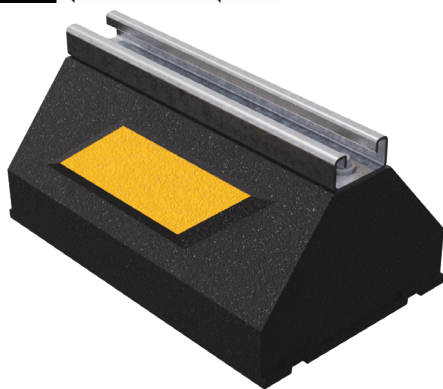
LIMITED  
LIFETIME WARRANTY

MAY QUALIFY FOR  
L.E.E.D CREDITS

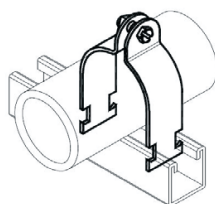
RECOMMENDED SPACING:  
REFER TO LOCAL CODE



CONSULT WITH A ROOFING CONSULTANT  
FOR ALLOWABLE LOADS.



Note: C10 illustrated.

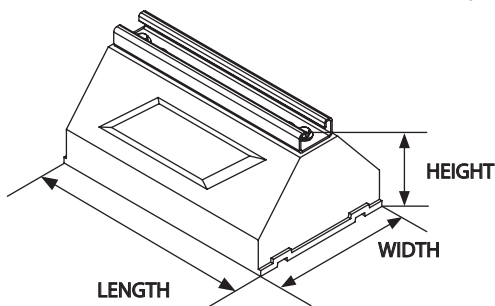


Strut clamps sold separately.

U.S. Patent No.  
7,866,093



Note: C10 illustrated. Pipe clamp by others.



### MATERIALS

#### BASE (C-PORT CXP):

100% RECYCLED RUBBER, UV RESISTANT

#### STRUT:

14-GAUGE GALVANIZED  
(13/16" HIGH)  
STEEL STRUT

SCAN FOR V-SPEC  
VIDEO SPECIFICATION



MODEL NO.	OVERALL HEIGHT (H1)*	WIDTH (W)	LENGTH (L)	WEIGHT	MAX LOAD
C10	4.8" (122mm)	6" (152mm)	9.5" (241mm)	5.6 lbs.	800 lbs. PER 9.5" LENGTH
C20	4.8" (122mm)	6" (152mm)	19.3" (490mm)	11.5 lbs.	
C30	4.8" (122mm)	6" (152mm)	29" (737mm)	17.4 lbs.	
C40	4.8" (122mm)	6" (152mm)	38.8" (986mm)	23.2 lbs.	
C48	4.8" (122mm)	6" (152mm)	48.5" (1232mm)	29 bs.	

\*H1 - Overall height is from bottom of rubber support to top of the strut

\*\*H2 - Base height is from bottom of rubber support to top of the rubber support

CALIFORNIA PROPOSITION 65 WARNING. This product contains chemicals known to the State of California to cause cancer and birth defects or other reproductive harm.

Job Name: _____	Page No: _____
Section No: _____	Contractor: _____
Schedule No: _____	Purchase Order No: _____