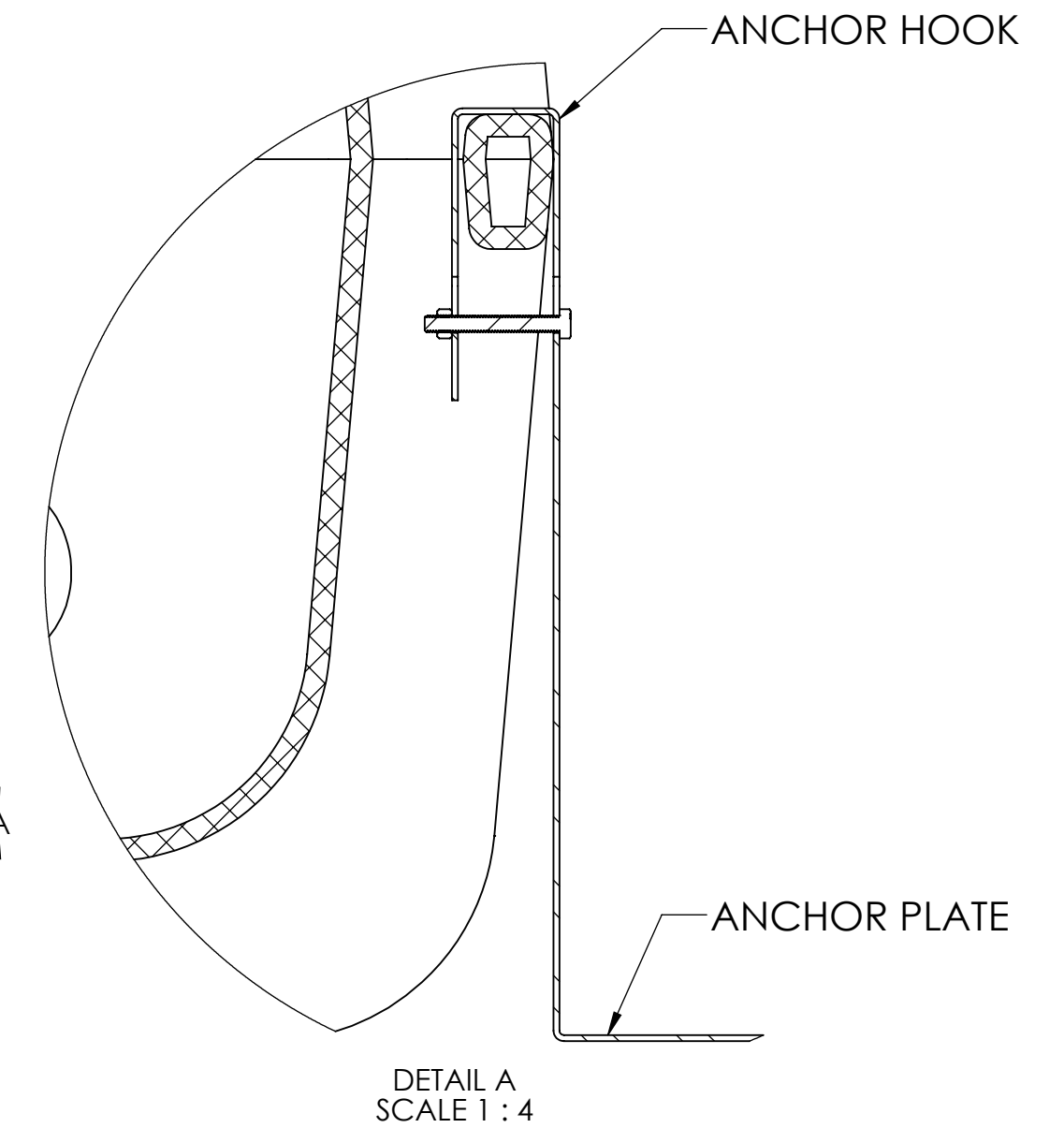
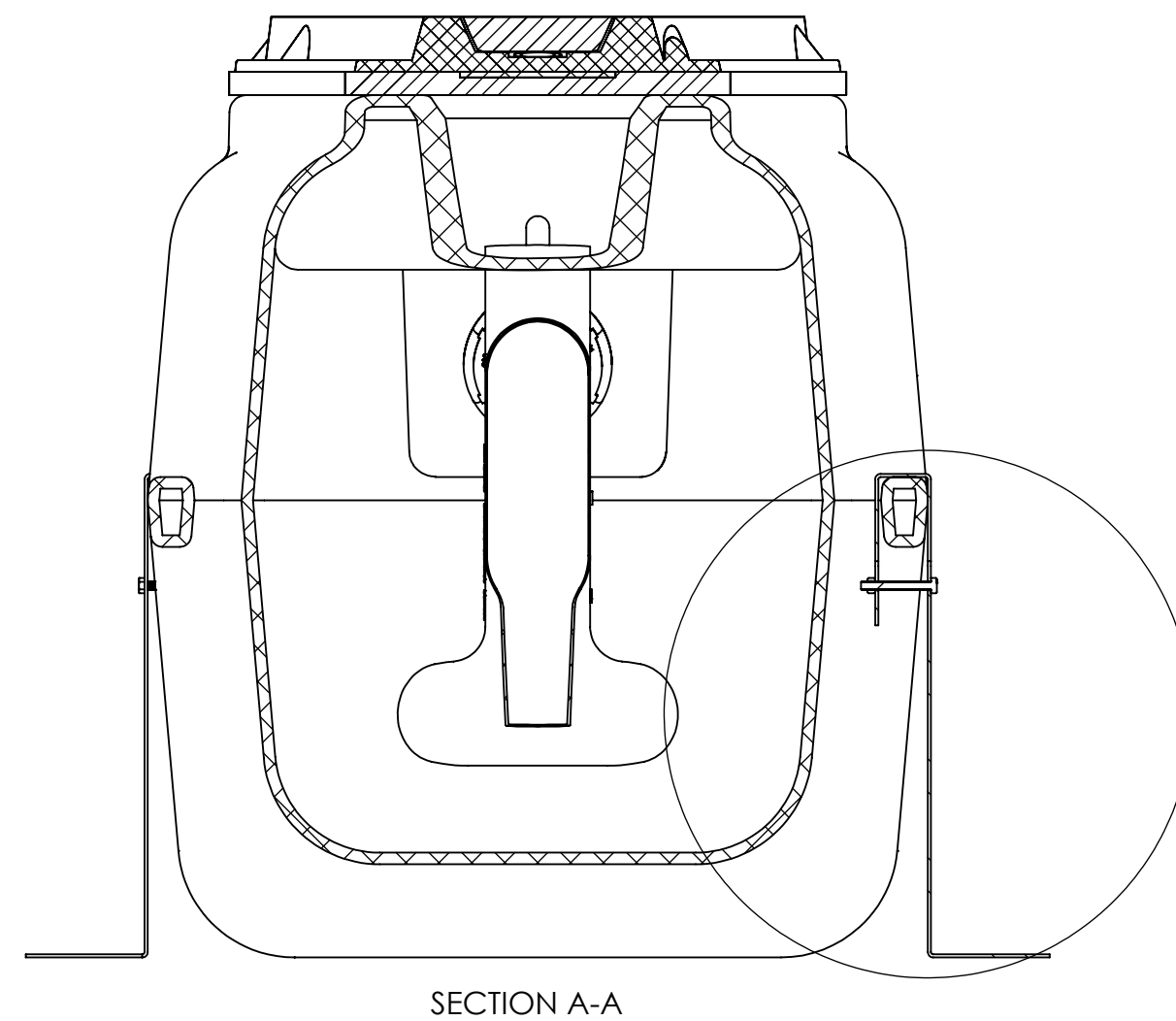
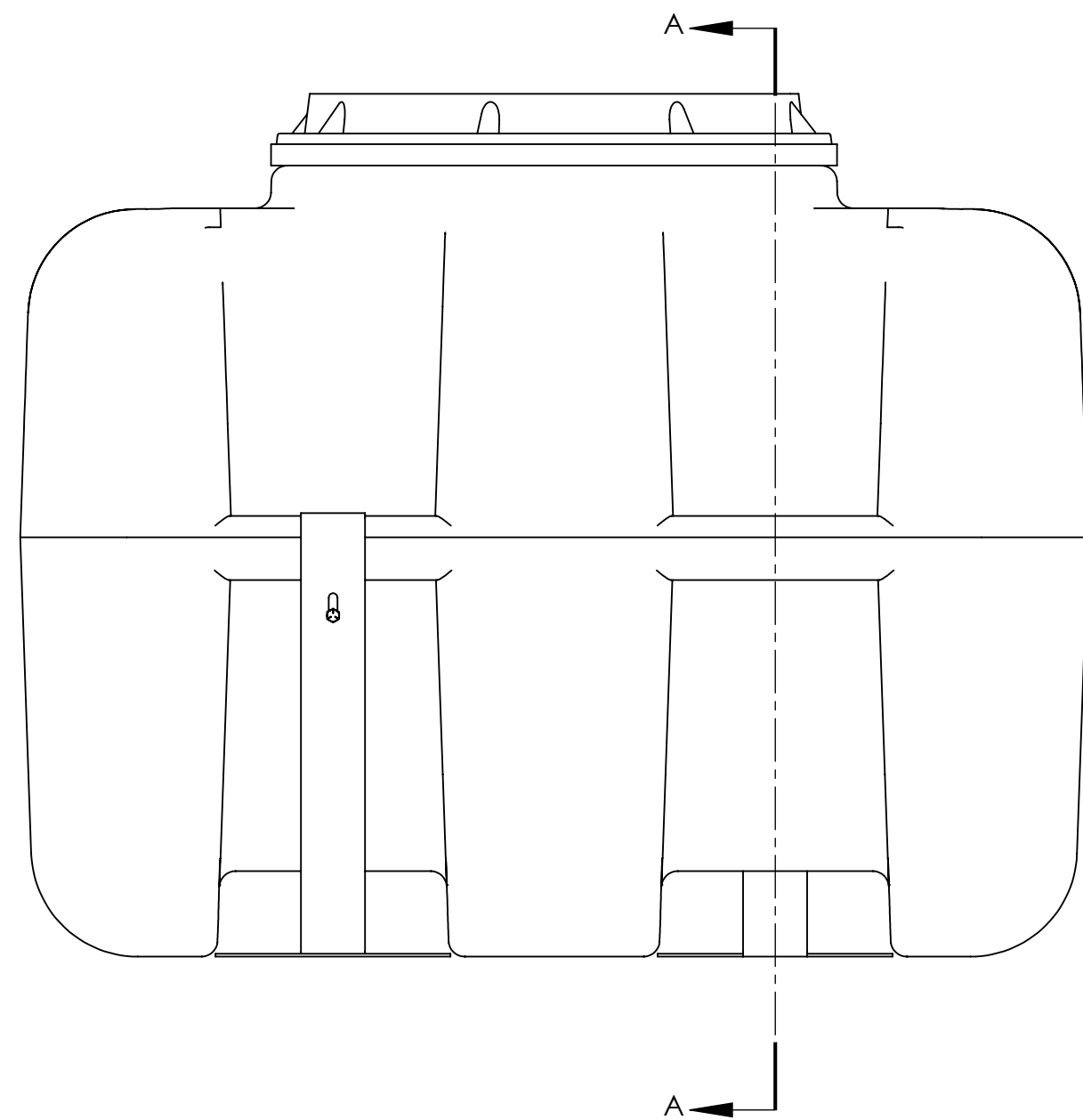
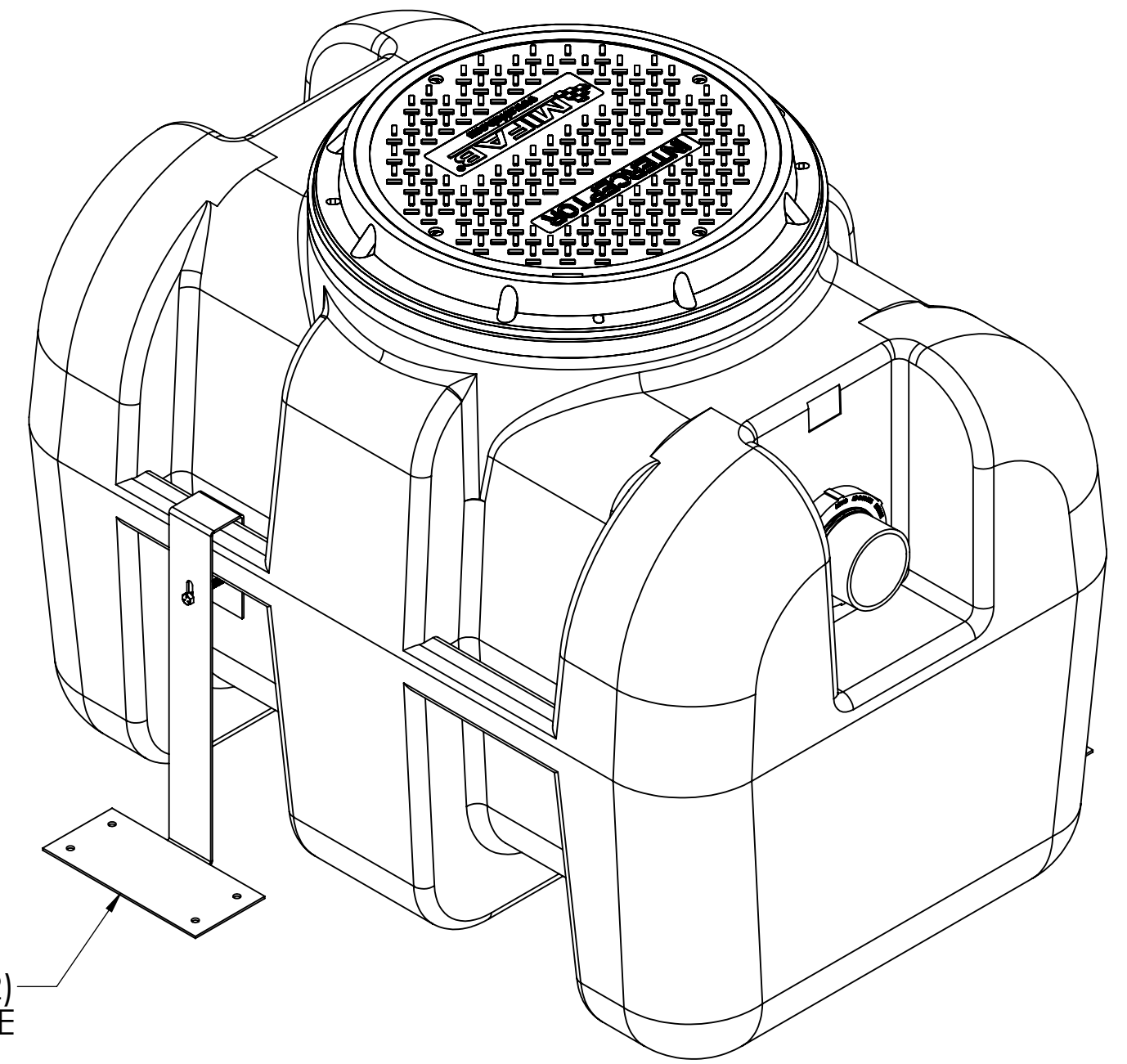


ANCHOR KIT INSTALLATION

Anchor kit is recommended for installation in high water table conditions to prevent float out. Necessity to be determined by Project Engineer. Hold down force achieved by backfill weight acting on Anchor plates.

Place Anchor hook over handle on interceptor. Bolt hardware through hole of anchor hook, to ensure hook does not become removed. Anchor plate may be bolted to concrete slab using provided holes.



PROPRIETARY AND CONFIDENTIAL
THE INFORMATION CONTAINED IN THIS DRAWING IS THE SOLE PROPERTY OF <INSERT COMPANY NAME HERE>. ANY REPRODUCTION IN PART OR AS A WHOLE WITHOUT THE WRITTEN PERMISSION OF <INSERT COMPANY NAME HERE> IS PROHIBITED.

LASER/SHEAR:	UNLESS OTHERWISE SPECIFIED:	NAME	DATE
BRAKE PRESS:	DIMENSIONS ARE IN INCHES	DRAWN	
WELDED BY:	TOLERANCES:	CHECKED	
CLEAN/PAINT:	FRACTIONAL $\pm 1/16$	ENG APPR.	
COMPLETED BY:	ANGULAR: MACH $\pm 1^\circ$ BEND $\pm 1^\circ$	MFG APPR.	
REVIEWED BY:	TWO PLACE DECIMAL ± 0.15	Q.A.	
NEXT ASSY	THREE PLACE DECIMAL ± 0.10	QUANTITY:	
USED ON	TYPICAL DRAFT ANGLE 2°	SEE-BOM	
APPLICATION	INTERPRET GEOMETRIC TOLERANCING PER:	FINISH	
	MATERIAL	DO NOT SCALE DRAWING	
	SEE-BOM		

MIFAB		
TITLE: BIG-750 ANCHOR KIT		
SIZE	DWG. NO.	REV
C	BIG-750-AK	
SCALE: 1:8	WEIGHT:	SHEET 1 OF 1