

Location: _____



BIG-750-99

**BIG-750-99 HYDRO MECHANICAL
GREASE INTERCEPTOR FOR MIAMI DADE**



Specification: MIFAB® Series BIG-750-99 hydro mechanical grease interceptor with flow rating of 50 GPM and grease holding capacity of 277 lbs. Interceptor has a limited lifetime warranty and is made in the USA out of seamless, rotationally molded High Density Polyethylene with 3/8" uniform wall thickness. Interceptor is designed for above or below ground installation and includes extension pipe gasket for ADS 18N12 (pipe not included) for the adjustable lid system, sample port access, internal baffle, deep seal trap covered by lid, internal flow control set to 50 GPM and 4" no hub inlet and outlet connections. Ductile iron pickable lids, H-20 rated, proof-load tested to 40,000 lbs. provide a water / gas tight seal. The lids are designed in accordance with the loading requirements of AASHTO H-20. The high density polyethylene material is PE 3135 from Dow 9.39 with a density of 0.939 g/cm3. Note that the interceptor is tested and certified to the ASME A112.14.3 Standard (Type D), and listed with I.A.P.M.O. For indoor / outdoor use. The BIG-750-99 is also tested and certified as a single unit, to the 99% efficiency requirements of the Miami-Dade DERM Standard (FOG 2.5 RER-DERM)

Function: Used in restaurants, kitchens, institutional and industrial facilities such as food processing and packaging plants and other types of food processing areas where fat, oil and grease (FOG) drains with the waste water. Typically installed either on or into the floor. Narrow width permits access through doorways and down stairwells. High Density Polyethylene construction ensures a lightweight installation process (two people can move and install it). Regular maintenance is required to keep the interceptor functioning. BIG-750-99 interceptor can withstand a temperature of up to and including 150° Fahrenheit.

NOTES:

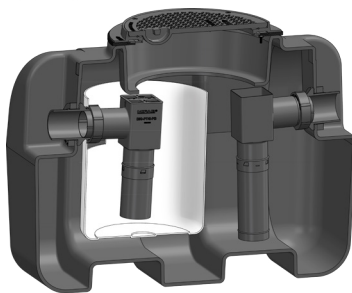
1. 4" No Hub inlet and outlet
2. Shipping weight: 150 lbs.
3. Operating temperature: 150° F
4. Capacities:
 - Liquid: 140 gal.(18.6 cu.ft.);
 - Grease: 277 lbs. (37.7 gal.) @50GPM (Type D) (BIG-750-99) (Miami Dade DERM approved at 99% efficiency)
 - Solids: 63 gal.
5. Do not use for pressure applications.
6. Cover placement allows full access to tank for proper maintenance.
7. Vent required per local code.
8. Engineered inlet and outlet diffusers with inspection ports are removable to inspect/clean piping.
9. Designed for below-grade, above-grade, indoor or outdoor installations.

BIG-MAX

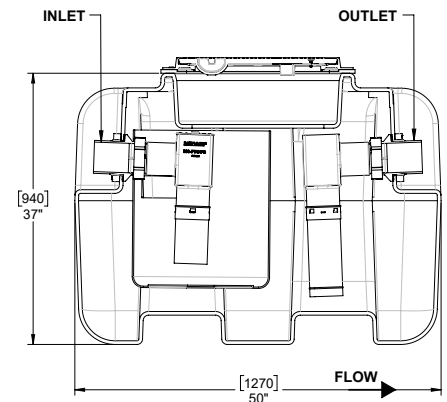
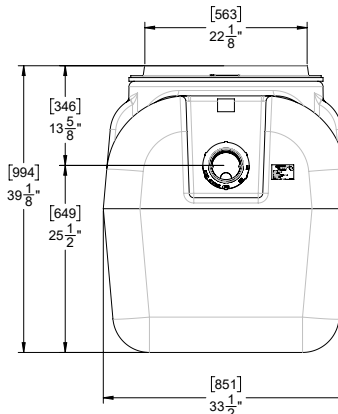
ASME
SETTING THE STANDARD



MIAMI-DADE
COUNTY



Satisfies Miami DERM 99% efficiency requirements.
Product labels are permanently attached to the inside and outside of the unit for easy viewing.



SUFFIX	OPTIONAL VARIATIONS	PART NO.
-AK	Anchor kit (set of two) for BIG-750	BIG-750-AK-SET
-C	Lid Extension - up to 44" high - for BIG-500 and BIG-750	BIG-750-EXT-44
-C	Lid Extension - up to 72" high - for BIG-500 and BIG-750	BIG-750-EXT-72
-C	Lid Extension - up to 94" high - for BIG-500 and BIG-750	BIG-750-EXT-94
-DS	Dosing Pump for Lil Max, Big Max, SuperMax (includes the -EP enzyme port)	XL-MI-PL-DP
-EP	Enzyme port for Lil Max, Big Max, SuperMax	XL-MI-PL-EP
-F6	6" no hub inlet and outlet (flow rate of 700 GPM with 6" connections) Only for gravity configuration	MI-G-PL-PF6 (2 pcs. required)
-FL-C	Membrane clamp kit for BIG-500 and BIG-750	BIG-750-PFLM
-HLA	High level alarm and float switch (to be installed on site) (for Lil Max, Big Max, SuperMax)	XL-MI-PL-HLA
-HLA2	High level alarm and dual float switch (to be installed on site) (for Lil Max, Big Max, SuperMax)	XL-MI-PL-HLA2
-HLAW	High level alarm and dual float switch with wifi capability (to be installed on site) (for Lil Max, Big Max, SuperMax)	XL-MI-PL-HLAW
-LHSI	No hub inlet on left hand side (not available with sediment bucket) (for Lil Max, Big Max, SuperMax)	MI-G-PL-PF4
-LHSO	No hub outlet on left hand side (not available with sediment bucket) (for Lil Max, Big Max, SuperMax)	MI-G-PL-PF4
-POK	Remote pump out kit (specify location and number required)	BIG-MAX-POK
-RHSI	No hub inlet on right hand side (not available with sediment bucket) (for Lil Max, Big Max, SuperMax)	MI-G-PL-PF4
-RHSO	No hub outlet on right hand side (not available with sediment bucket) (for Lil Max, Big Max, SuperMax)	MI-G-PL-PF4
-RPO	3" Remote pump outlet connections on top of interceptor - specify location and number required	BIG-MAX-RPO
-SAMPOR	External sampling port - offset, 4" or 6" No Hub inlet / outlet	SAMPOR
-SB	Sediment bucket - for BIG-750	BIG-750-PSB
-SP	External sampling port - inline, high connections	BIG-SP
-SP-L	External sampling port - inline, low connections	BIG-SP-L
-SP-OF	External sampling port - offset	BIG-SP-OF
-STR	Safety shield for Big Max	BIG-STR
-T	Female threaded connections (2 pcs. Included)	MI-G-PL-PF4T

CALIFORNIA PROPOSITION 65 WARNING. This product contains chemicals known to the State of California to cause cancer and birth defects or other reproductive harm.

Job Name: _____

Page No: _____

Section No: _____

Contractor: _____

Schedule No: _____

Purchase Order No: _____