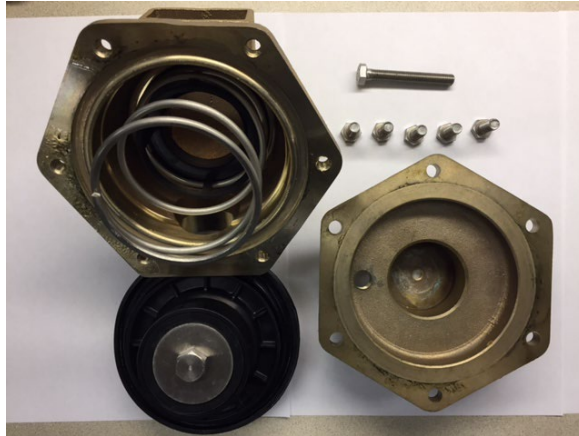


BEECO FRV-4.00 Piston assembly setting Process

Note: If this process is not followed there is a very high chance the valve will not function properly.

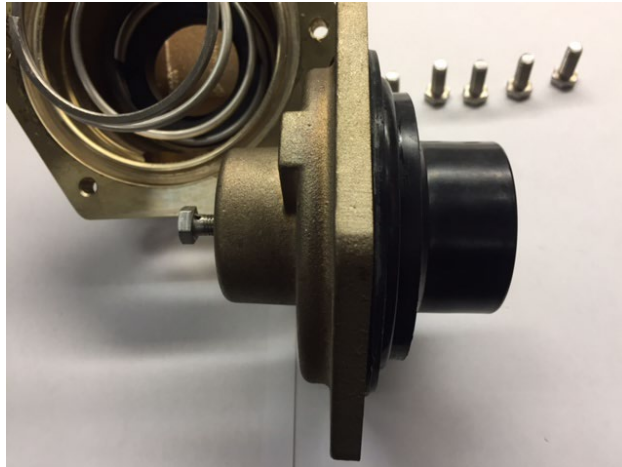
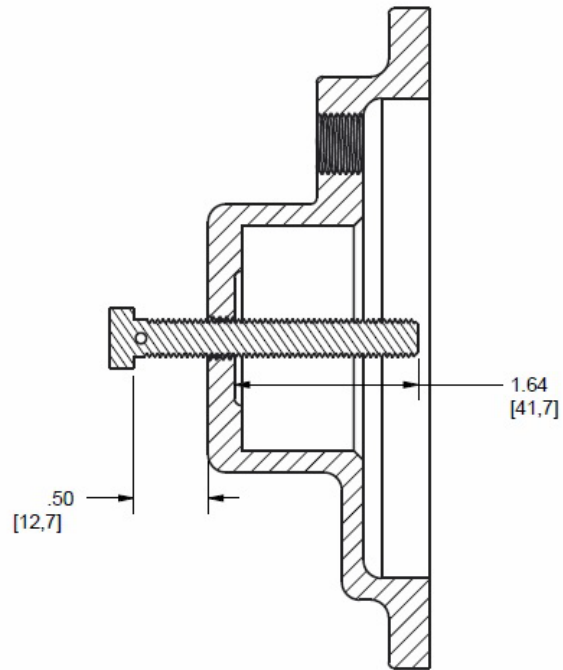
- 1) Below are the major assemblies of the four inch relief valve ready for final assembly.



- 2) Place the piston assembly into the cover after applying the proper grease to the piston o-ring.



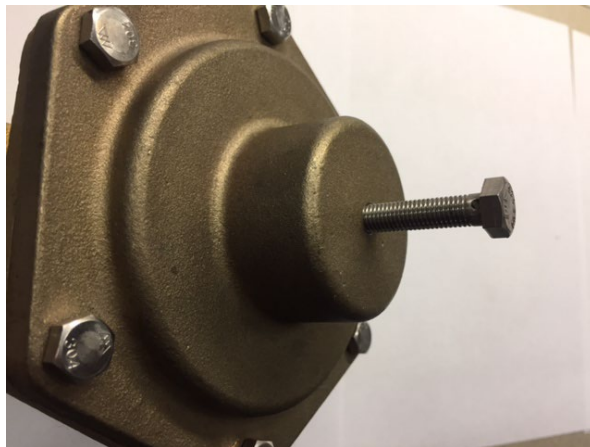
- 3) Line up the piston assembly so that the diaphragm is against the cover without pushing the piston in such that the diaphragm is not distorted. Install the cover assembly screw in to hold the piston assembly in this condition while putting the body and cover together. Note that the drawing shows the approximate range to set the screw for setting the piston assembly.



- 4) Now perform final assembly between the cover and body with the spring between them.



- 5) Unscrew the cover assembly screw and remove it from the assembly. The valve should function properly now.



- 6) Finally, test the valve and make sure it opens at a pressure differential between 2.5psi and 3.5psi.