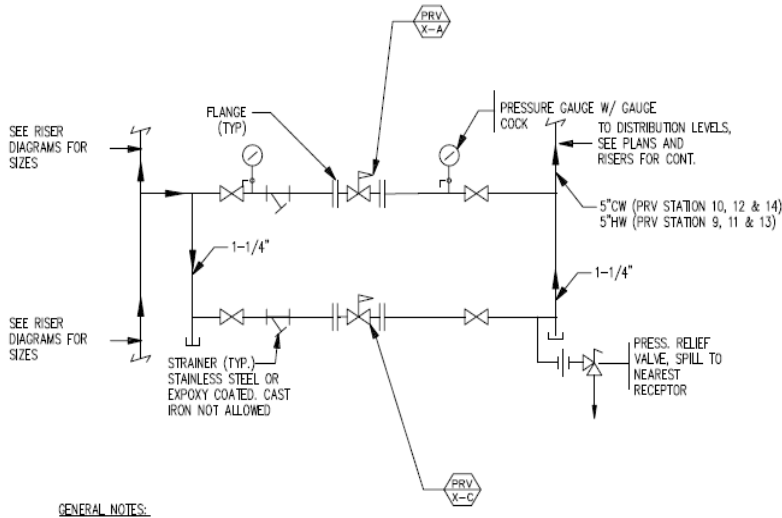




Distributed by: MIFAB®

# Automatic Control Valves for Plumbing & Mechanical Systems

- High Rise
- Multi-Family
- Hospital and Institutional
- Schools, Stadiums and Dormitories
- Industrial Process & Control



Model HF-PR Pressure Reducing Valve with Stainless Steel Pilot Control System

## Control and Protect your Plumbing System Whatever the Application Beeco has you covered

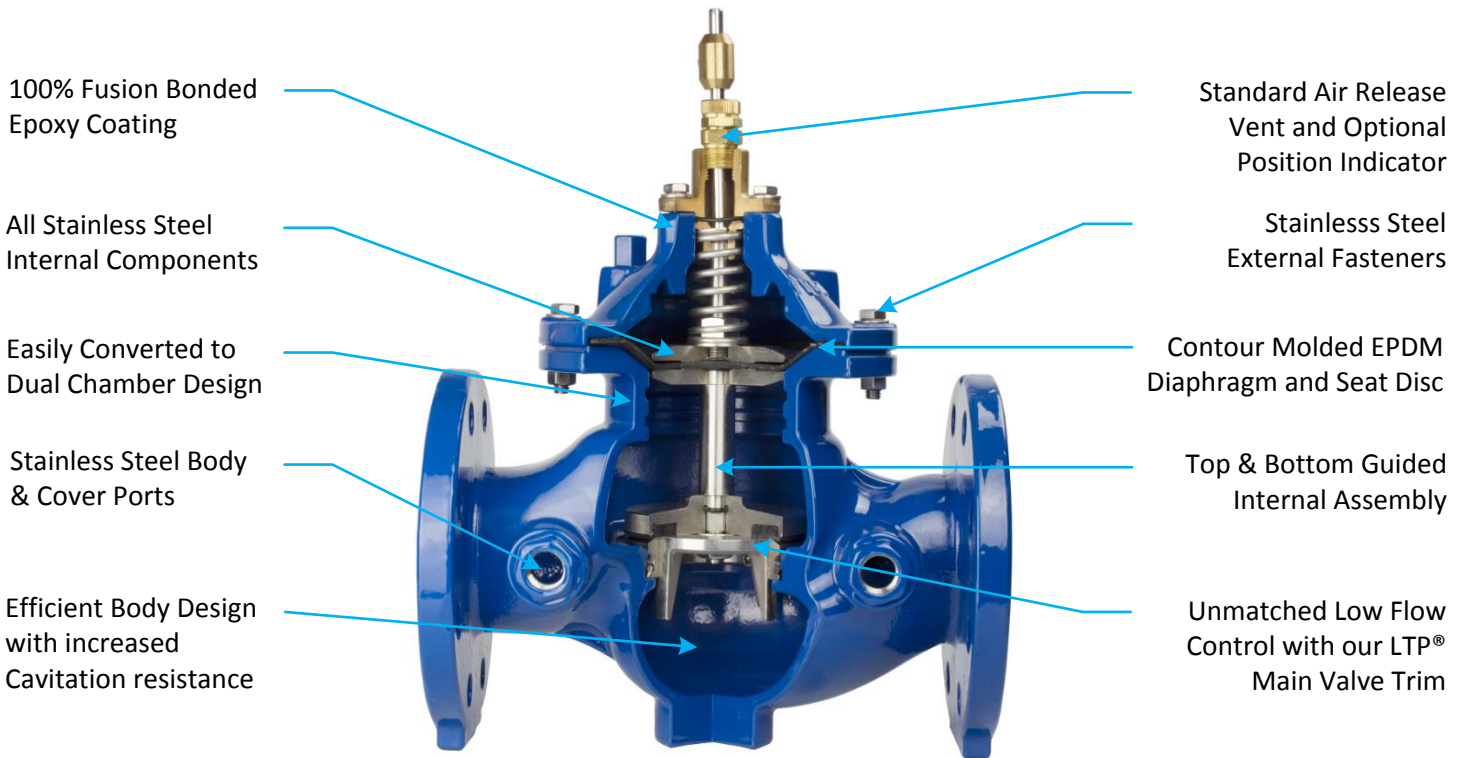


316 Stainless Steel

- **Pressure Reducing** – Accurate control from <5 gpm to full rated capacity without special Trim designs or additional Low Flow By-Pass system
- **Flood Protection Shut-Off** - Protect against catastrophic water damage from unchecked RPZ discharge
- **Pressure Relief** - Protect against dangerous pressure spikes and surges
- **High Pressure Safety Shut-Off** - Zero discharge protection against Reducing Valve failure
- **Differential Pressure Control** - Balance Supply and Return Headers to maintain system pressure or efficiency
- **Solenoid (On-Off)** - Control processes or isolates zones
- **Level Control** - Maintain constant level or allow cycling for water quality
- **Blending and Flow Control** - Hot/Cold or Soft Water mixing

# Standard Features Without the Standard Upcharge

Quality IS Within Budget



**100% Epoxy Coating** prevents corrosion build-up which is a major cause of premature Diaphragm failure. Our superior coatings reduce maintenance down-time and help maintain water quality

**Stainless Steel Internal Components** are corrosion and wear resistant, reduce excessive Diaphragm wear and maintenance down-time

**Easy Conversion to Dual Chamber** allows simple design flexibility without complicated special parts

**Stainless Steel Body & Cover Ports** prevent corrosion from blocking and clogging the Pilot System for trouble-free operation

**Efficient Body Design and flow path** creates a lower cavitation index, allowing higher cavitation resistance and superior turn-down ratio

Represented by:

**Air Release Vent** is standard on each valve to quickly and easily vent trapped air and test the Main Valve Diaphragm seal. Optional Position Indicator is easily added to existing valves

**EPDM Diaphragm and Seat Disc** are chlorine and chloramine resistant, and are suitable for hot and cold water applications without the need for special materials

**Stainless Steel External Fasteners** are non-corrosive and allow easy removal and worry free maintenance

**Top and Bottom Guided** Internal Assembly provides precise shaft alignment and assures positive drip-tight closure and frictionless operation

**LTP® Main Valve Trim** gives unmatched low-flow performance from near zero to full flow capacity without the need for special Trim or additional Low Flow Bypass

