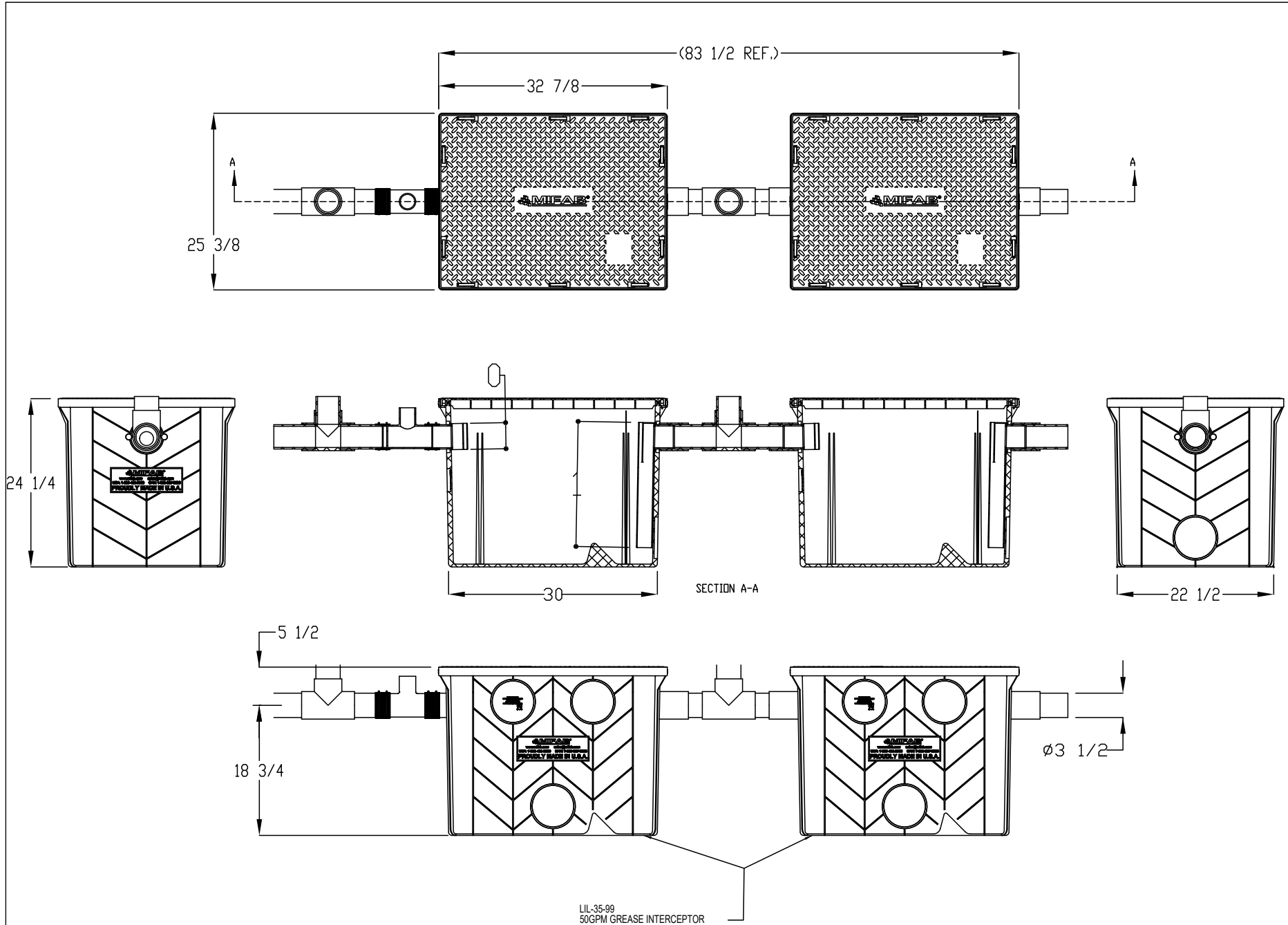
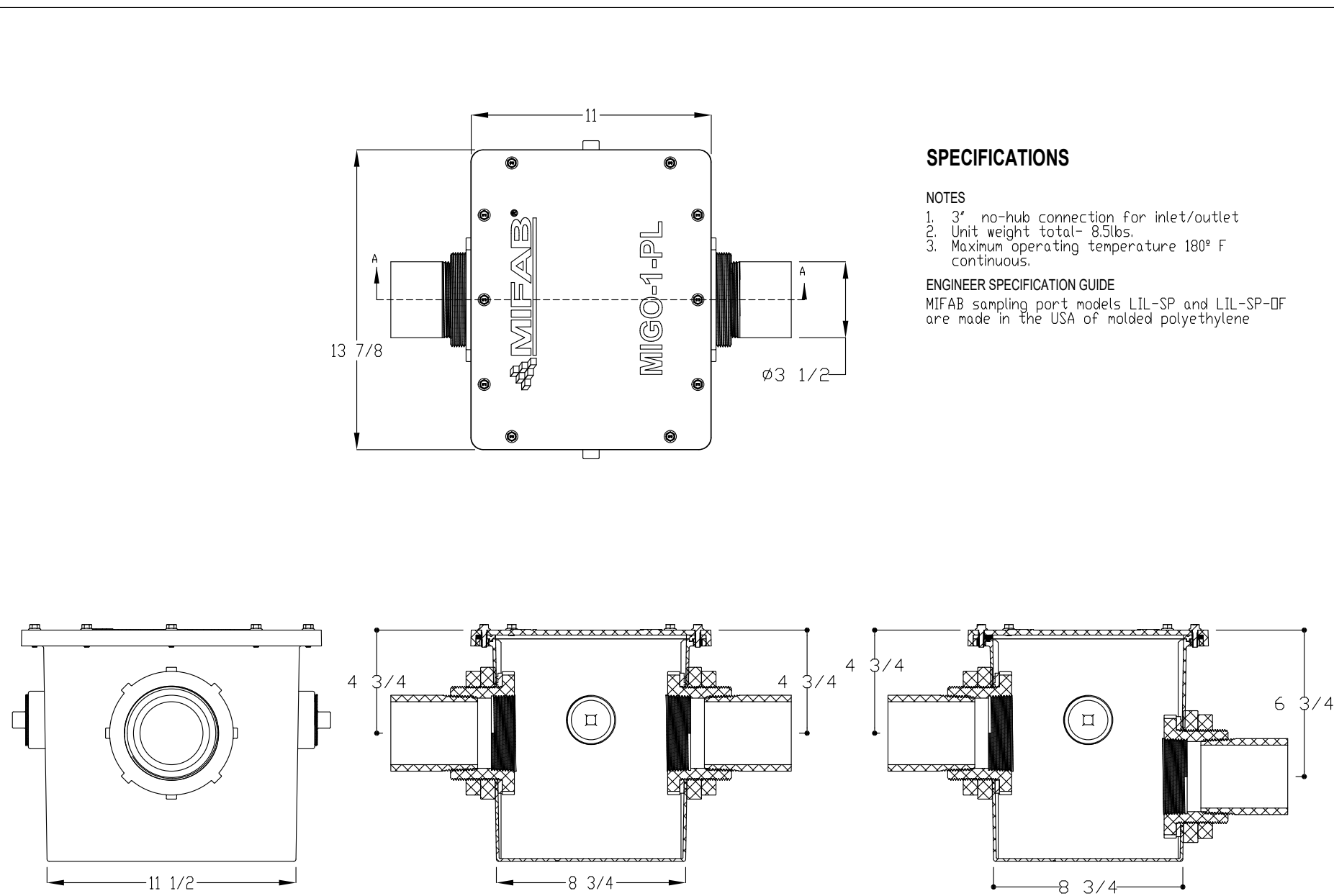


LIL-35-99- 35 GPM HDPE GREASE INT./ 83.12LB GREASE CAP



LIL-SP/-OF - LIL MAX HDPE SAMPLING PORT 10.25" HEIGHT



SPECIFICATIONS

NOTES

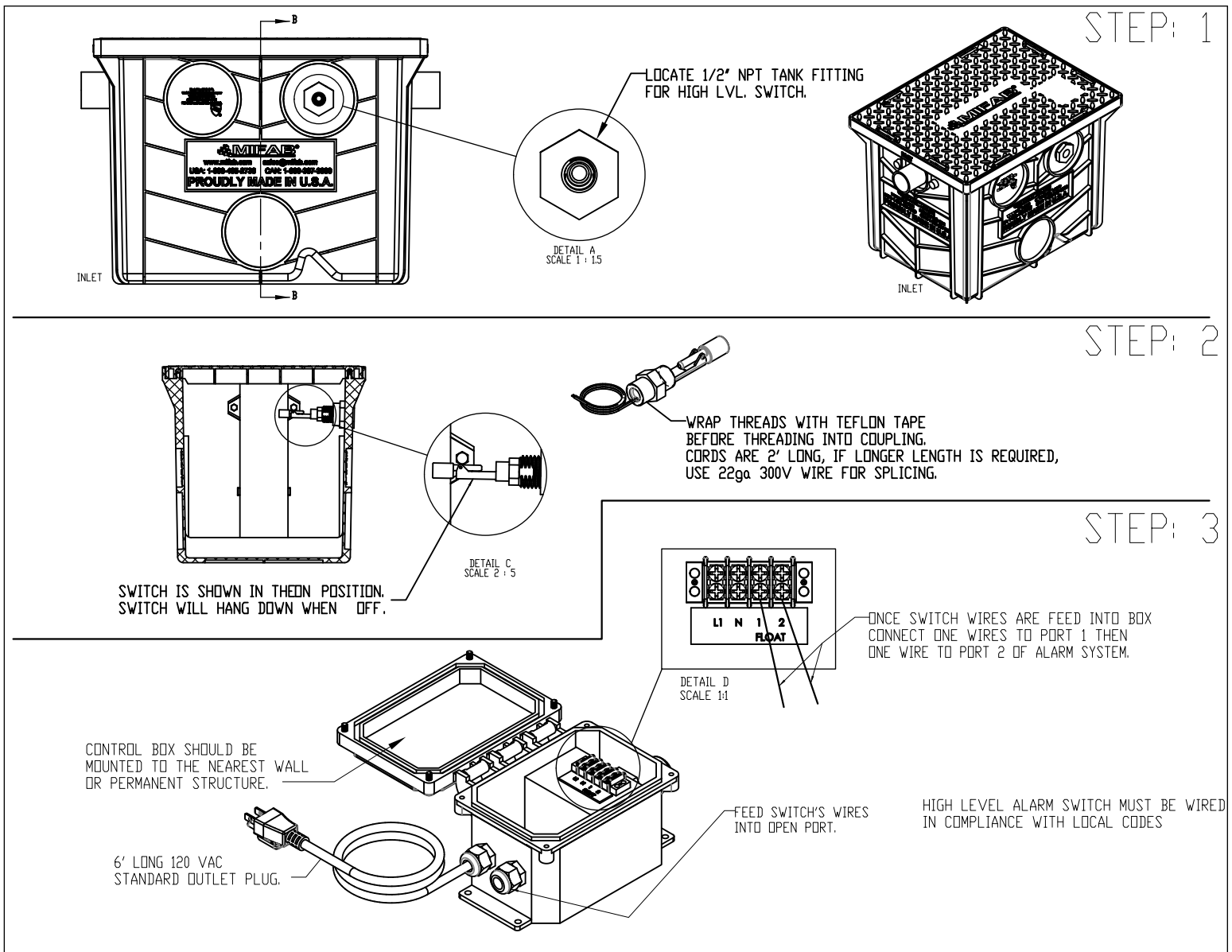
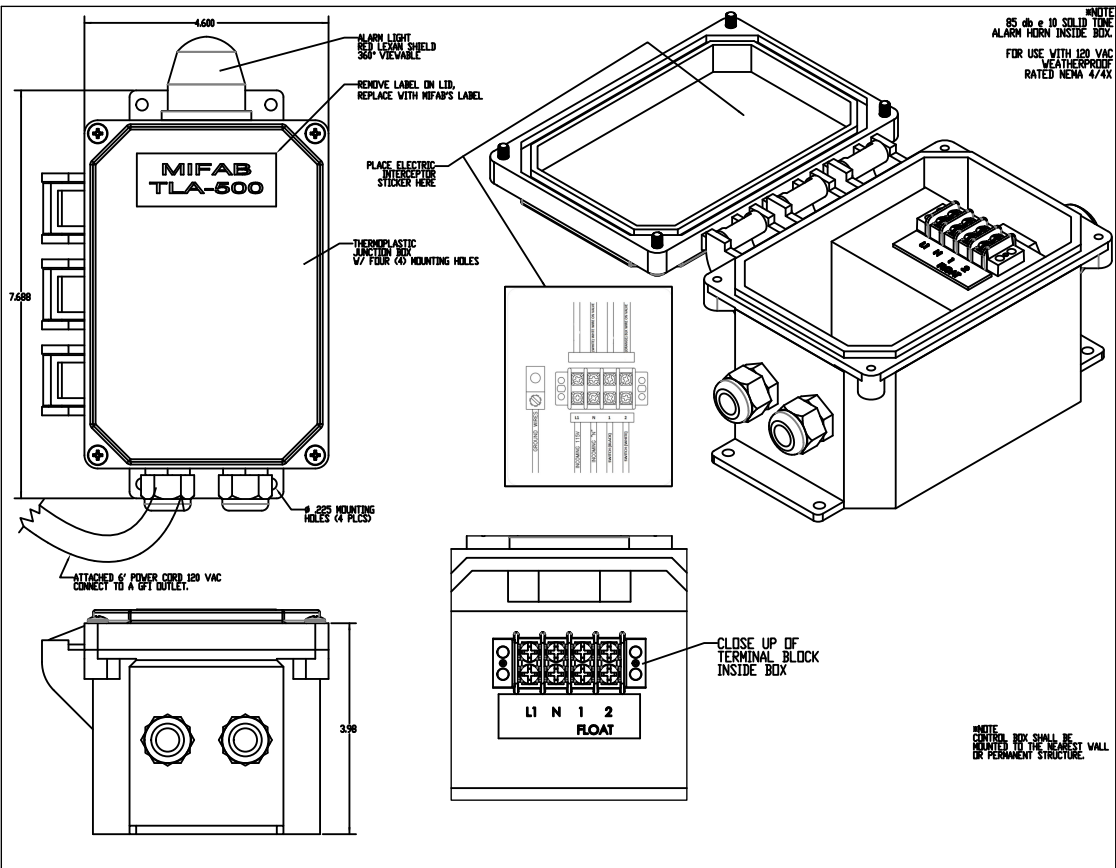
1. 3" no-hub connection for inlet/outlet
2. Unit weight total- 8.5lbs.
3. Maximum operating temperature 180° F continuous.

ENGINEER SPECIFICATION GUIDE

MIFAB sampling port models LIL-SP and LIL-SP-OF are made in the USA of molded polyethylene

HIGH LEVEL ALARM OPTION, SUFFIX -HLA

TLA-500 - TANK LEVEL ALARM WITH RED LIGHT; 85DB @ 10' WITH 6' 120v AC CORD



| | | | |
|--|-----------|--------------|--|
| | | | |
| TITLE: 83.12lb grs cap. 99% efficient grease int | | | |
| SIZE | DWG. NO. | REV | |
| C | LIL-35-99 | | |
| SCALE: | WEIGHT: | SHEET 1 OF 3 | |



Notice of Verification

Good Harbour Laboratories Inc. (GHL) is an ISO 17025 accredited lab that specializes in testing the performance of water treatment equipment. GHL is also an ISO 17020 approved verifier for Environmental Technology Verification (ETV). GHL adheres to all relevant standards and protocols while testing or verifying but GHL is not a certifying body.

Test Date(s): August 06 - 07, 2019

Project No.: 2019-017

Report No.: TR-JC20190812-02

Issued To: MIFAB
1321 W 119th Street
Chicago, IL 60643

Product tested: MI-G-6-PL-99, LIL-35-99/ FE-35-99 (two units connected in series)

This product was tested to, and met the requirements of **35 GPM** rating of, the following standard(s):

PDI-G101 (2017)
ASME A112.14.3-2018 (Type A)

Results: The two units, connected in series, had an average removal efficiency of 99.0% with 83.12 lbs of lard retained.

Verified By: 
Joe Costa
Senior Scientist & Quality Manager

Date: August 16, 2019

Good Harbour Laboratories
T: 905.896.7276 | E: info@goodharbourlabs.com
A: 2596 Dunwin Drive, Mississauga, ON L5L 1J5
www.goodharbourlabs.com



FOG 2.0 RER-DERM
Hydromechanical FOG Control Device (H-FCD)

| Required Information | Tank No.1 | Tank No.2 | Total Tanks (2) |
|--|-----------|-----------|-----------------|
| Capacity (gpm) | N/A | N/A | 35 |
| FDG Load Capacity (lbs) at 99% Efficiency | 83.12 LBS | | 83.12 LBS |
| Manufacturer | Mifab | Mifab | Mifab |
| Model No. | N/A | N/A | LIL-35-99 |
| 3rd Party Certifier (i.e., PDI, CSA, ASME) | ASME | ASME | ASME |
| Interceptor Monitoring Alarm Model No. | N/A | N/A | N/A |
| Interceptor Monitoring Device Model No. | N/A | N/A | N/A |
| Solid Separator Make and Model | | | |

GREASE TRAP SCOPE OF WORK

CONNECT NEW FIXTURES AND NEW GREASE LINES TO

- MODEL "LIL-35-99" 35 GPM
- POLYETHYLENE WASTEWATER SAMPLING PORT.
- (2)LILMAX SERIES, EACH 44 GALLON LIQUID STORAGE CAPACITY POLYETHYLENE GREASE INTERCEPTOR
- TO COMPLY FOG 2.0 RER-DERM REQUIRMENTS

NOTE:

SAMPLING PORT SHALL BE ACCESSIBLE AT ALL TIMES WITHOUT HAVING TO REMOVE MERCHANDISE AND WITHOUT STANDING WATER ON GROUND SURFACE WITH A MINIMUM 36 INCHES HORIZONTAL CLEARANCE FROM ANY WALL, FIXED EQUIPMENT OR STORED MATERIALS AND A MINIMUM 48 INCHES VERTICAL CLEARANCE FROM ANY FIXED EQUIPMENT OR STORED MATERIALS. GREASE INTERCEPTOR SHALL BE ACCESSIBLE AT ALL TIMES SO AS TO ALLOW FOR MAINTENANCE AND CLEANING WITHOUT IMPEDIMENTS.

FOG 2.0 RER-DERM
FOG Control Device (FCD)
Installation Inspection

| | |
|----------------|--|
| Approval Date: | |
| Inspector: | |

DERM's FCD Installation Inspection Required Prior to Plumbing Final for all Municipal projects. Failure to secure DERM's FCD Installation Inspection will result in disapproval of Final Inspection by the Municipal Building Official, pursuant to Section 24-42-6, MDC Code.
To schedule DERM's FCD Installation inspection for Municipal projects please send an e-mail to IFOG2@miamidade.gov, 24 hours prior to desired date. Provide DERM plans process M-number, complete address of the site, folio number, and contact person name and phone number.

NOTE:

- ALL GREASE TRAPS AND SOLID INTERCEPTORS CAN BE CLEANED AT ANY TIME
- AREA FOR INTERCEPTORS ONLY
- NO CARS CAN PARK ON TOP OF THEM



MICHAEL WHITESIDE
PRESIDENT
Ph: (773) 341-3001
MWhiteside@Mifab.com

NOTE:

ADD EXTENSIONS TO MEET EXISTING ELEVATION OF MAIN SANITARY LINE.

| | | | | | INCREMENTAL | | | | ACCUMULATED | | | |
|-----|------|-------|--------|----------|---------------------------------------|-------------|--------------|------------|---------------------------------------|-------------|--------------|------------|
| | | | | | (drop-skim) / drop x 100 = efficiency | | | | (drop-skim) / drop x 100 = efficiency | | | |
| No. | Test | Clear | Second | Rate:GPM | lb. Added | lb. Skimmed | lb. Retained | Efficiency | lb. Added | lb. Skimmed | lb. Retained | Efficiency |
| 1 | 1 | 2 | 113.85 | 35.0 | 7.00 | 0.00 | 7.00 | 100.0 | 7.00 | 0.00 | 7.00 | 100.0 |
| 2 | 2 | 1 | 113.97 | 35.0 | 7.00 | 0.00 | 7.00 | 100.0 | 14.00 | 0.00 | 14.00 | 100.0 |
| 3 | 1 | 2 | 113.28 | 35.2 | 7.00 | 0.04 | 6.96 | 99.4 | 21.00 | 0.04 | 20.96 | 99.8 |
| 4 | 2 | 1 | 112.53 | 35.5 | 7.00 | 0.04 | 6.96 | 99.4 | 28.00 | 0.08 | 27.92 | 99.7 |
| 5 | 1 | 2 | 113.93 | 35.0 | 7.00 | 0.04 | 6.96 | 99.4 | 35.00 | 0.13 | 34.87 | 99.6 |
| 6 | 2 | 1 | 112.59 | 35.4 | 7.00 | 0.05 | 6.95 | 99.3 | 42.00 | 0.17 | 41.83 | 99.6 |
| 7 | 1 | 2 | 113.59 | 35.1 | 7.00 | 0.06 | 6.94 | 99.1 | 49.00 | 0.24 | 48.76 | 99.5 |
| 8 | 2 | 1 | 112.87 | 35.4 | 7.00 | 0.08 | 6.92 | 98.9 | 56.00 | 0.31 | 55.69 | 99.4 |
| 9 | 1 | 2 | 113.59 | 35.1 | 7.00 | 0.10 | 6.90 | 98.5 | 63.00 | 0.42 | 62.58 | 99.3 |
| 10 | 2 | 1 | 112.87 | 35.4 | 7.00 | 0.12 | 6.88 | 98.3 | 70.00 | 0.54 | 69.46 | 99.2 |
| 11 | 1 | 2 | 113.75 | 35.1 | 7.00 | 0.15 | 6.85 | 97.8 | 77.00 | 0.69 | 76.31 | 99.1 |
| 12 | 2 | 1 | 112.00 | 35.6 | 7.00 | 0.19 | 6.81 | 97.3 | 84.00 | 0.88 | 83.12 | 99.0 |

LIL-35-99(35gpm) PERFORMANCE
REQUIREMENT RATING



TITLE:
83.12lb grs cap. 99% efficient
grease int

| | | | |
|--------|---------|--------------|-----|
| SIZE | DWG. | NO. | REV |
| C | | LIL-35-99 | |
| SCALE: | WEIGHT: | SHEET 2 OF 3 | |



LIL MAX® EXTENSION INSTALLATION INSTRUCTIONS



Each extension provides up to 9" of height extension. If more than 9" of extension is required, stack multiple extension assemblies.

Includes:
(2) Extension components
(1) Roll of gasket
(10) Zip ties

Equipment Required
Silicone sealant
Saw

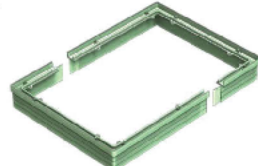
"You can see and feel
our business grow
because of MIFAB."
— Dan Thomas of San Thomas and
Associates, Shasta Gap, CA



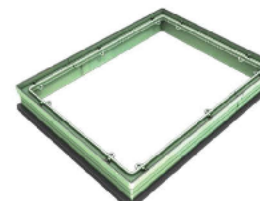
STEP 1 Measure the height from the top of the interceptor to the desired ground level



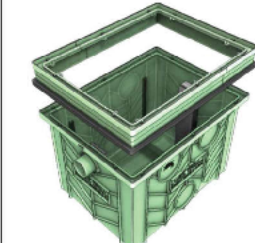
STEP 2 Cut off the bottom of each extension component to the desired height



STEP 3 Apply silicone sealant in the groove between each body component push them together



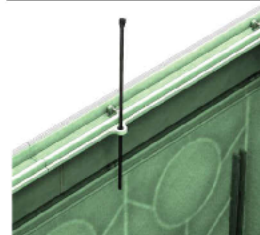
STEP 4 Apply the gasket to the bottom outer edge of the extension



STEP 5 Remove the lid and place the extension onto the Lil Max interceptor



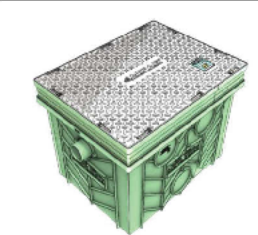
STEP 6 Check around the edges to see if the gasket is installed correctly



STEP 7 Place the zip ties through the holes in the extension. There are 10 zip ties, one for each hole.



STEP 8 Tighten the zip ties around the pins of the interceptor or through the next hole if using more than one extension

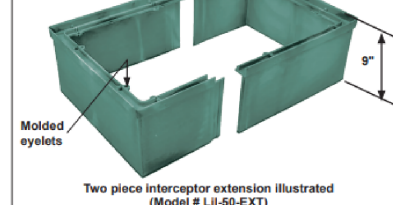


STEP 9 Place the interceptor lid onto the extension

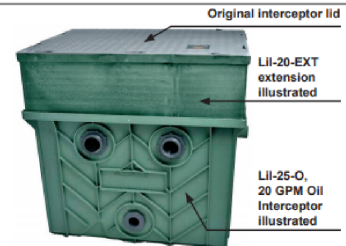
CALIFORNIA PROPOSITION 65 WARNING: This product contains chemicals known to the State of California to cause cancer and birth defects or other reproductive harm. Design and dimensions are subject to modification. Prices do not include applicable taxes. Visit www.mifab.com for the most recent product information. MIFAB®, Inc., 1321 West 119th Street, Chicago, Illinois 60643-5109, USA USA Toll Free: 1-800-465-2736 • Fax: 1-773-341-3049 All sales subject to MIFAB's Terms and Conditions. Please refer to inside front cover. Canada Toll Free: 1-800-387-3880 • sales@mifab.com

LIL MAX® EXTENSIONS AND ACCESSORIES

Extensions: Extensions are typically required when the interceptor is buried into the ground and the inlet is lowered to meet the waste piping from the fixtures. In such a case, the lid needs to be "extended" up to the ground or grade level. MIFAB® manufactures a two piece H.D.P.E. injection molded 9" high extension for the 20 and 25 GPM models (same extension) and also for the 35, 50 and LIL-25-LP models (same extension). These extensions are designed to fit into the top of the Lil Max® body after the lid is removed. Neoprene gasket is provided by MIFAB® with each extension piece to be installed into the recess in the top of the interceptor and also into the recess in the top of the extension. Securing ties are also provided by MIFAB® in order to connect the extension (through the molded eyelets) to the securing pins molded into the top of each interceptor. The 9" extensions can be stacked in 9" (or shorter) increments in order to attain the desired extension height. The original lid is then secured into the top of the extension. There are 1" horizontal lines molded into the sides of the extensions to allow the installer to cut (with a Saw All) the height down to the required dimension. Extensions can be cut down to a 2" overall height.



Two piece interceptor extension illustrated (Model # LIL-25-EXT)



Extension installed with Lil-25-O oil interceptor

Lil Max Grease Interceptor
Installation Per:
P.D.I. Standard PDI-G101
A.S.M.E. A112.14.3 Type A and B.

INSTALLATION CONSIDERATIONS

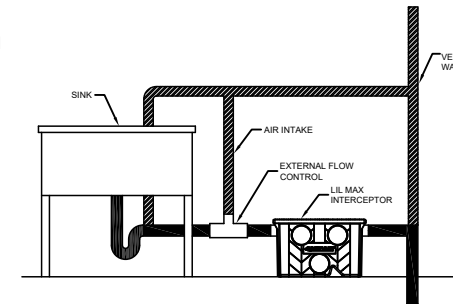
Install interceptor as close as practical to fixture or fixtures being served. The interceptor may be set on the floor, partially recessed in the floor, with the top flush to the floor, or fully recessed below the floor to suit piping and structural conditions. Anticipate sufficient clearance for removal of interceptor cover for cleaning. Avoid installation where long runs of pipe (exceeding 25 feet) are necessary to reach interceptor. Do not install grease interceptor in waste line from garbage grinder.

FLOW CONTROL

The flow control fitting furnished with PDI certified interceptors must be installed ahead of interceptor in the waste line beyond the last connection from the fixture and as close as possible to the underside of the lowest fixture. When waste of two or more sinks, or fixtures, are combined to be served by one interceptor, a single flow control fitting should be used. Air intake for flow control may terminate under sink drain board as high as possible to prevent overflow or terminate in a return bend at the same height and on outside of building. When fixture is individually trapped and back-vented, air intake may intersect vent slack. All installation recommendations subject to approval of code authority.

VENTING

Grease interceptors must have a vented waste, size in accordance with code requirements for venting traps to retain water seal and prevent siphoning.



INSTALLATION DIAGRAM
Typical commercial installation. This figure will serve as a guide to practical application of grease interceptors.

SYSTEM SPECIFICATIONS

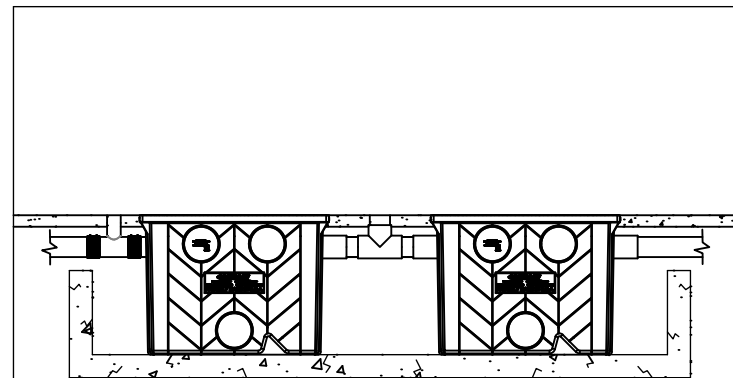
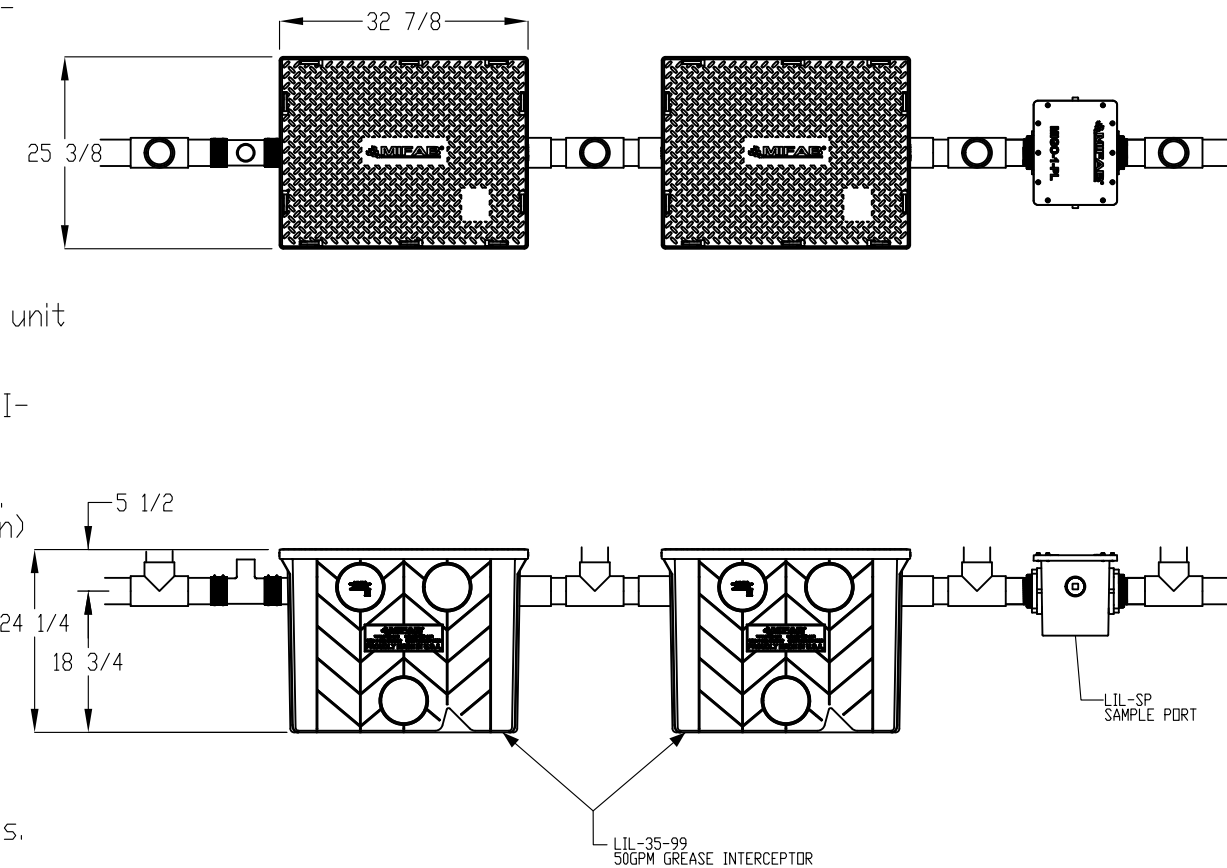
- 3" No-hub inlet/outlet
- Max flow rate: 35gpm
- Liquid capacity: 44 gallons
- Max grease capacity: 83.12lbs.
- Grease capacity based off 99% efficiency per Miami Dade FDG 2.0 requirement
- Maximum operating temperature 180° F
- Meets the PH of 3-10 per DERM Miami-Dade

Notes

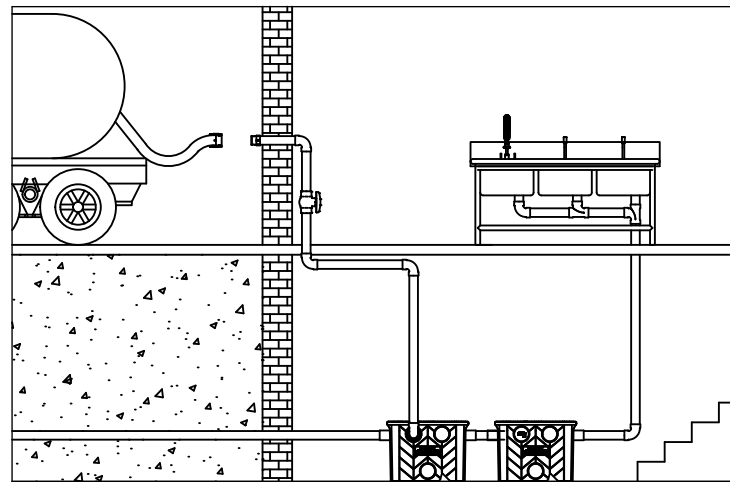
- Each grease interceptor is certified and listed by ASME A112.14.3 and CSA B481 grease interceptor standards
- Flow control to be installed in first unit only (Internal flow control for ASME A112.14.3 tested interceptors and external vented flow control for PDI-G101 tested units. MIFAB has both approvals)
- For gravity drainage application only. (Do not use for pressure application)
- High density polyethylene walls
- Lid placement allows full access to tank for proper maintenance.
- Vent system per local codes.
- Designed narrow footprint allows clearance through doorways and down stairwells.
- For buried application.
- Locate interceptor as close as possible to grease producing fixtures.

Options:

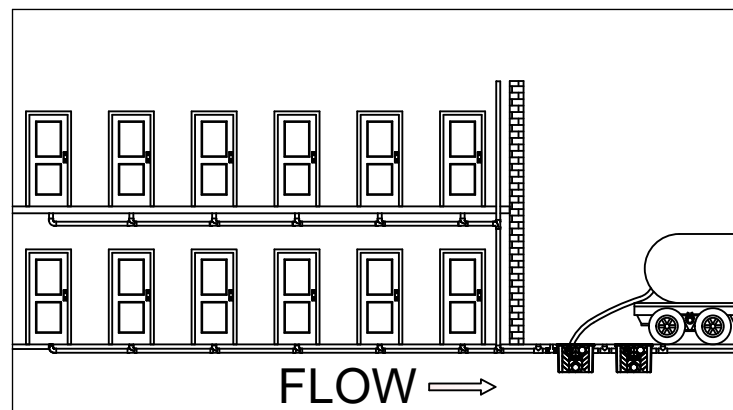
High level alarm monitoring system



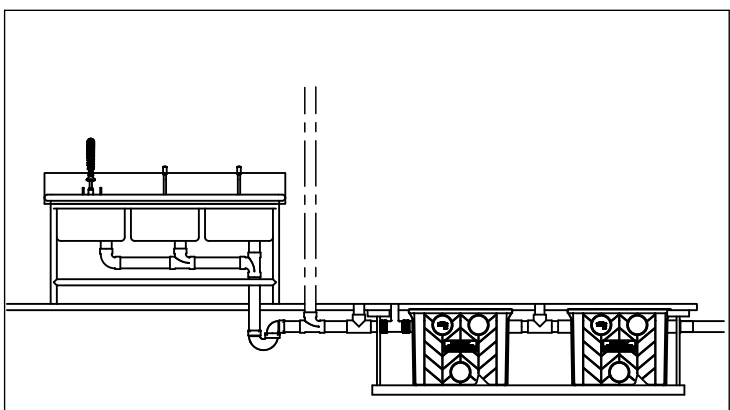
Inside a Corroded Concrete Unit



Basement installation with Pumpout Kit



Serving an Apartment Complex



Recessed and Suspended



TITLE:
83.12lb grs cap. 99% efficient
grease int

| SIZE | DWG. NO. | REV |
|--------|-----------|--------------|
| C | LIL-35-99 | |
| SCALE: | WEIGHT: | SHEET 3 OF 3 |