

Location: \_\_\_\_\_

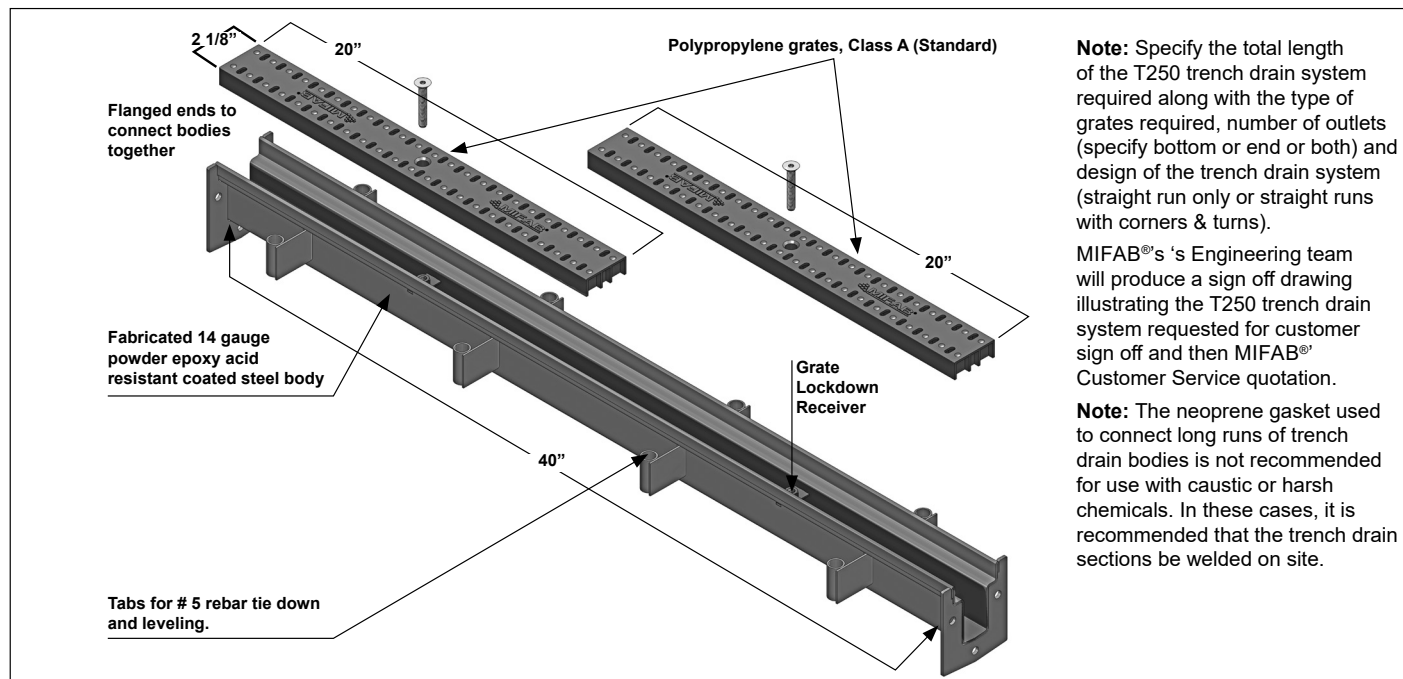


**T250**

**2 1/2" WIDE, 3" DEEP TRENCH DRAIN BODY AND GRATE SYSTEM**

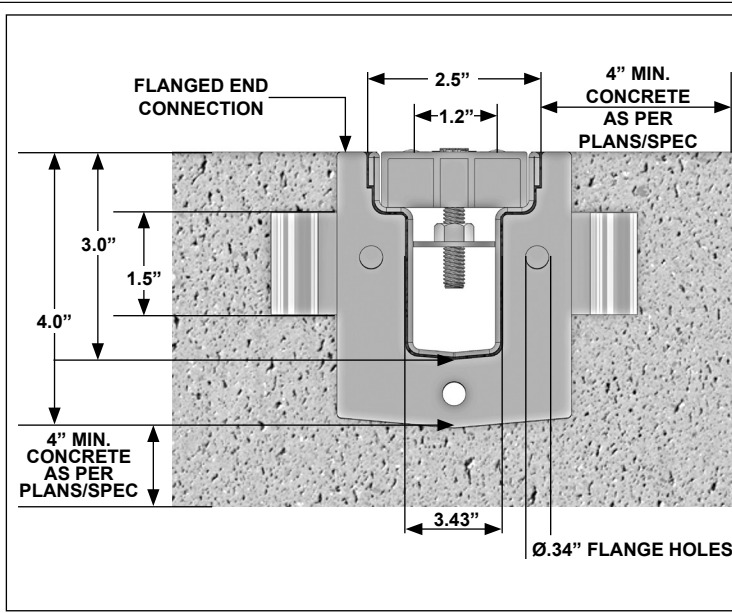
**Specification:** MIFAB® Series T250, 2 1/2" wide, 3" deep, 40" long (or length as needed), non sloped trench drain system. Body is manufactured from 14 gauge steel and finished with an acid resistant powder epoxy coating. Each body has tabs for # 5 rebar tie down and leveling. Bodies have flanged ends to connect to each other with a neoprene rubber gasket in between. End and bottom outlets are available in 2" no hub outlet connections and fabricated as part of the trench drain system. 20" long polypropylene grates are provided as standard (Suffix –HPP) along with grate lockdown hardware for each grate to secure to the body.

**Function:** Used around residential and landscaped areas that require surface drainage in shallow (only 3" deep) excavations. The lightweight acid resistant powder epoxy coated steel body provides for long life. An infinite number of body sections can be assembled together to serve any requirement. 45 and 90 degree body sections are available. Aluminum wire grates (Suffix –AWG), Stainless Steel wire grates (Suffix –SSWG) and Stainless Steel decorative grates (Suffix –SSDA) are also available.



**Note:** Specify the total length of the T250 trench drain system required along with the type of grates required, number of outlets (specify bottom or end or both) and design of the trench drain system (straight run only or straight runs with corners & turns).  
MIFAB®'s Engineering team will produce a sign off drawing illustrating the T250 trench drain system requested for customer sign off and then MIFAB® Customer Service quotation.  
**Note:** The neoprene gasket used to connect long runs of trench drain bodies is not recommended for use with caustic or harsh chemicals. In these cases, it is recommended that the trench drain sections be welded on site.

Grates	
Suffix	Description
-HPP	Polypropylene, Heel Proof Slotted grate - Class A, 20" long (grate is a black color)
-AWG	Aluminum wire grate - Class A
-SSDA	Stainless Steel, Decorative grate - Class A
-SSWG	Stainless Steel, Fabricated Wire grate - Class A
-BA	Buy American Act compliant product
-PA	Pennsylvania Steel Act compliant product
-7MG	MI-GARD trap seal protection device (available for 1-1/2", 2", 3", 3-1/2", 4" & 6" outlet connections)
End caps / Outlets	
-PEC	Closed end cap
-PE2	2" no hub end outlet
-PB2	2" no hub bottom outlet
Accessories and 45 and 90 Degree Fabrications	
-PGLVP	1 1/2" long vandal resistant grate lockdown hardware (2 per body section-1 for each grate)
Standard	5/16-18 x 2" Zinc Coated Bolts (2 per package) - for grate lockdown
-SSB	5/16-18 x 2" Stainless Steel Bolts (2 per package) - for grate lockdown
-PB-45	45 Degree Body Section
-PB-90	90 Degree Body Section
-45	45 Degree Polypropylene, Heel Proof Slotted grate - Class A
-90	90 Degree Polypropylene, Heel Proof Slotted grate - Class A
-CUT	Cutting / per cut - Net Price only
-SOF	Side Outlet Fabrication
-CF	Cross Fabrication
-C	Membrane clamp (2 pieces) with hardware



CALIFORNIA PROPOSITION 65 WARNING. This product contains chemicals known to the State of California to cause cancer and birth defects or other reproductive harm.

Job Name: \_\_\_\_\_ Page No: \_\_\_\_\_  
 Section No: \_\_\_\_\_ Contractor: \_\_\_\_\_  
 Schedule No: \_\_\_\_\_ Purchase Order No: \_\_\_\_\_