

Location: _____

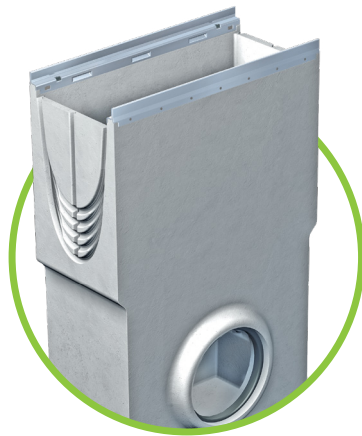


T1700-CB820

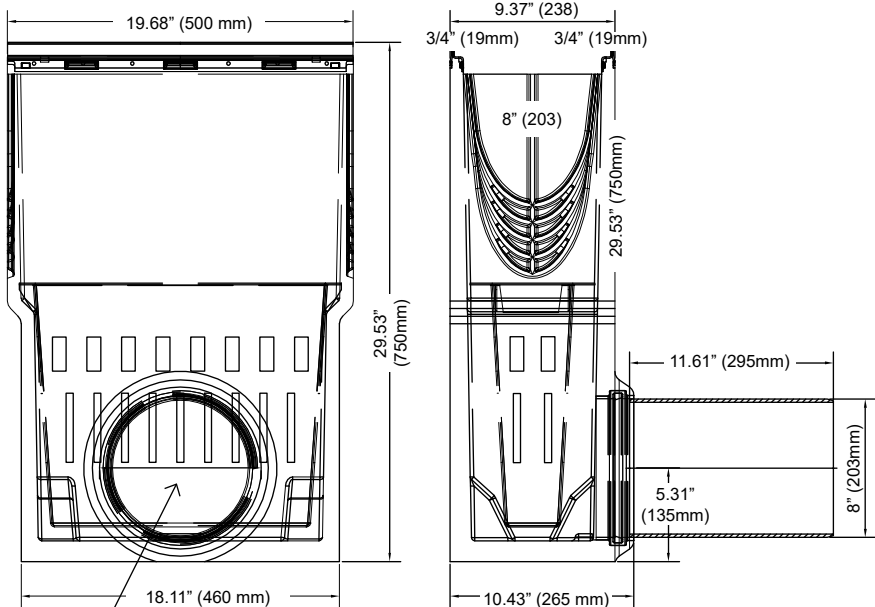
8" x 20", FILCOTEN® FIBRE RE-INFORCED, CONCRETE TRENCH DRAIN CATCH BASIN WITH INTEGRAL STEEL RAIL AND GRATE SYSTEM

Specification: MIFAB® Series T1700-CB820, 8" wide, 19.68" x 29.53" deep, FILCOTEN® catch basin. Body is manufactured from a fibre-reinforced concrete based material. Each body is manufactured with an integral 4mm thick, extra heavy duty, galvanized steel rail. The grates are extra heavy duty ductile iron (Load Class E). Grates are secured to the body with a four point self-locking system.

Function: Used in commercial areas such as factories, warehouses, parking garages, car dealerships, gas stations, public and residential areas, parks, sports complexes, town squares, railway stations and cycle and foot paths. Ideal for environmentally sensitive areas because the body channels are free of resins, heavy metals, VOC and all chemicals. Exceptional adhesion to surrounding concrete foundation due to the concrete composition of the body channels – resulting in a monolithic all concrete installation. Less breakage during transport and installation due to impact resistant, fibre-reinforced, UV resistant and non flammable concrete material. Extra heavy duty integral galvanized steel rail allows for heavy duty, hard wheel traffic applications.



FILCOTEN® T1700 catch basin (part #: T1700-CB820) Use with the T1700N, T1710N and T1720N bodies



The female connection is designed with an inside gasket to receive 8" cast iron no hub pipe only. Insert the 8" cast iron no hub pipe into the female connection and ensure that it passes the inside gasket.

Note: The T1700 and T1700-3 (8" wide) are available in neutral trench drain bodies only. The T1700-ST (step connector) is required to connect the T1700N and T1700N-3 bodies to the T1710N and T1710N-3 and also to connect the T1710N and T1710N-3 bodies to the T1720N and T1720N-3. Pages 18 and 19 explain why neutral bodies are better to use than sloped bodies.

Load Class Definition: Load Class C - Heavy Duty, DIN 19580, 56,000 lbs. 1,162 psi. For commercial pneumatic tire traffic patterns and tractor trailers.

Cast Grates (all 20" long. Two grates required per body section)

Suffix	Description
-4	Ductile Iron Slotted Grate, Class E, 1/2 metre long. (.55" wide x 7.87" long slots) (75 sq. inches of free area)
-4-13	Ductile Iron Slotted Grate, Galvanized, Class E, 1/2 metre long. (.55" wide x 7.87" long slots) (75 sq. inches of free area)
-5	Plastic Sediment Bucket
-6	Vandal Proof grate lockdown (Stainless Steel) (Does not work with perforated grate).
-FPC-500	Galvanized Steel, Perforated Grate, Class C, 1/2 metre long
-FSPC-500	Stainless Steel, Perforated Grate, Class C, 1/2 metre long

Job Name: _____ Page No: _____
 Section No: _____ Contractor: _____
 Schedule No: _____ Purchase Order No: _____