

Location: \_\_\_\_\_

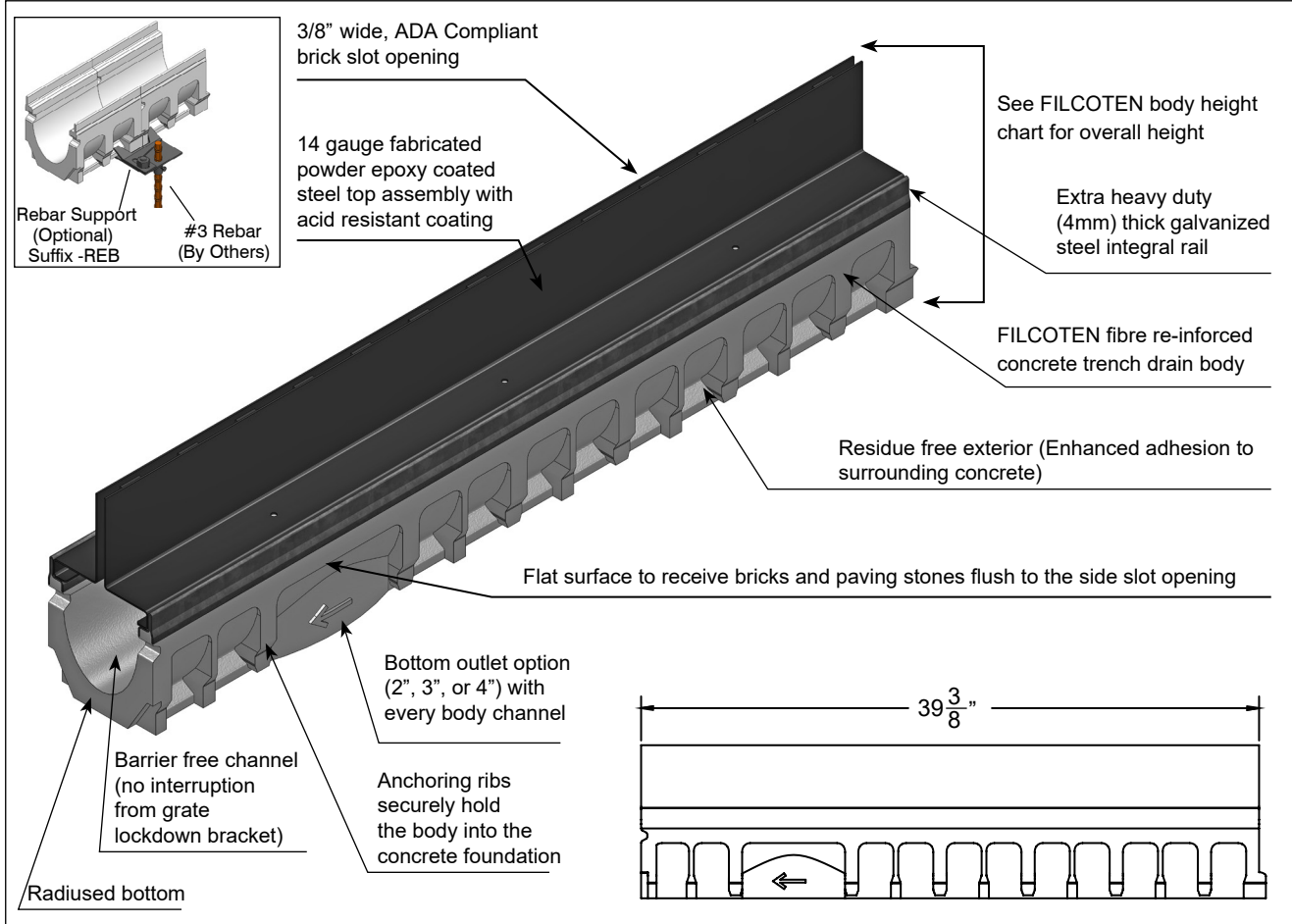


# T1500-BRS

6" WIDE FILCOTEN® RE-INFORCED, CONCRETE TRENCH DRAIN WITH BRICK SLOT SYSTEM

**Specification:** MIFAB® Series T1500-BRS, 39 3/8" long, neutral sloped brick slot drain system. Body is manufactured from fibre re-inforced concrete. Bodies have interlocking ends, a radiused bottom for efficient liquid drainage and multiple anchoring ribs to securely hold the body into the concrete foundation. Each body is manufactured with an integral 4mm thick, extra heavy duty, galvanized steel rail. End and bottom outlets are available in 2", 3" or 4" no hub outlet connections (specify outlet size). Complete with 3/8" wide (ADA compliant) brick slot opening top assembly for surface drainage. The slot opening top assembly is manufactured from 14 gauge steel and finished with an acid resistant powder epoxy coating. Specify -.250 for 1/4" wide slot opening. Specify -3 for a fabricated Type 304 stainless steel slot opening top assembly. Catch basins are also available.

**Function:** Used in commercial areas such as factories, warehouses, parking garages, car dealerships, gas stations, public and residential areas, parks, sports complexes, town squares, railway stations and cycle and foot paths where the typical grate design is not desired. The 3/8" narrow slot opening provides a discreet and architecturally pleasing drainage opening for surface water. Ideal for environmentally sensitive areas because the body channels are free of resins, heavy metals, VOC and all chemicals. Exceptional adhesion to surrounding concrete foundation due to the concrete composition of the body channels – resulting in a monolithic all concrete installation. Less breakage during transport and installation due to impact resistant, fibre-reinforced, UV resistant concrete material.



Job Name: \_\_\_\_\_ Page No: \_\_\_\_\_

Section No: \_\_\_\_\_ Contractor: \_\_\_\_\_

Schedule No: \_\_\_\_\_ Purchase Order No: \_\_\_\_\_

Location: \_\_\_\_\_



**T1500-BRS**

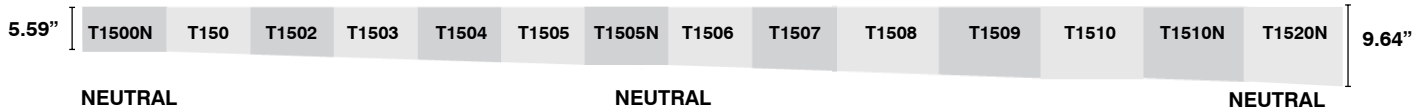
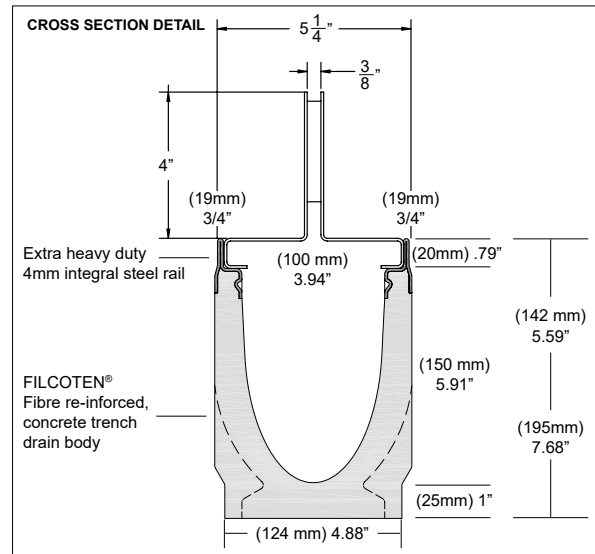
**6" WIDE FILCOTEN® RE-INFORCED, CONCRETE TRENCH DRAIN WITH BRICK SLOT SYSTEM**

Body Part Number	Overall Body Depth		Maximum Flow Rate			Weight (Less Grate)	
	E1 (Min.)	E2 (Max.)	GPM Gallons per Minute	LPS Litres per Second	CFS Cubic Feet per Second	Lbs.	Kg.
T1500N*	5.59" (142 mm)	5.59" (142 mm)	51	3.22	0.111	33.80	17.60
T1501	5.71" (145 mm)	5.91" (150 mm)	58	3.69	0.127	39.90	18.10
T1502	5.91" (150 mm)	6.10" (155 mm)	63	3.95	0.136	40.79	18.50
T1503	6.10" (155 mm)	6.30" (160 mm)	67	4.21	0.145	41.67	18.90
T1504	6.30" (160 mm)	6.50" (165 mm)	71	4.48	0.154	42.55	19.30
T1505	6.50" (165 mm)	6.69" (170 mm)	75	4.75	0.164	43.43	19.70
T1505N*	6.69" (170 mm)	6.69" (170 mm)	84	5.32	0.183	43.87	19.90
T1506	6.69" (170 mm)	6.89" (175 mm)	80	5.02	0.173	44.31	20.10
T1507	6.89" (175 mm)	7.09" (180 mm)	84	5.29	0.182	45.19	20.50
T1508	7.09" (180 mm)	7.28" (185 mm)	88	5.56	0.191	46.08	20.90
T1509	7.28" (185 mm)	7.48" (190 mm)	92	5.83	0.201	46.96	21.30
T1510	7.48" (190 mm)	7.68" (195 mm)	97	6.11	0.210	47.84	21.70
T1510N*	7.68" (195 mm)	7.68" (195 mm)	119	7.52	0.259	51.81	23.50
T1520N	9.64" (245 mm)	9.64" (245 mm)	127	9.60	0.339	65.91	29.90

All calculations based on formula of PRANDTL/ COLEBROOK.

\*Capacity with neutral channel trench of 10m

Suffix	Description
-45	45 degree body section
-90	90 degree body section
-7MG	MI-GARD Floor Drain Trap Sealer 1-1/2", 2", 3" 3-1/2", 4" or 6"
-PBO2	2" No Hub Bottom Outlet
-PBO3	3" No Hub Bottom Outlet
-PBO4	4" No Hub Bottom Outlet
-PBDS	Bottom Dome Strainer
-PEC	Closed End Cap
-PEO2	2" No Hub End Outlet
-PEO3	3" No Hub End Outlet
-PEO4	4" No Hub End Outlet
-REB	Rebar Support
-TEE	Fabricated Tee



Job Name: \_\_\_\_\_ Page No: \_\_\_\_\_

Section No: \_\_\_\_\_ Contractor: \_\_\_\_\_

Schedule No: \_\_\_\_\_ Purchase Order No: \_\_\_\_\_

MIFAB® reserves the right to make changes in material and design without formal notice or obligation.

USA: 1-800-465-2736 www.mifab.com CAN: 1-800-387-3880