

Location: _____

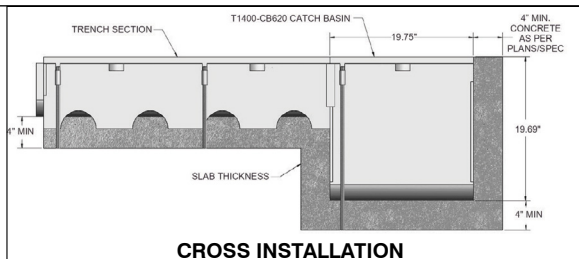


T1400-CB620

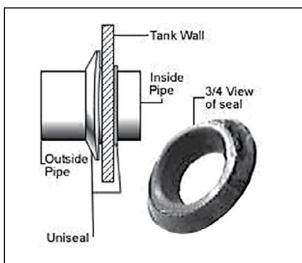
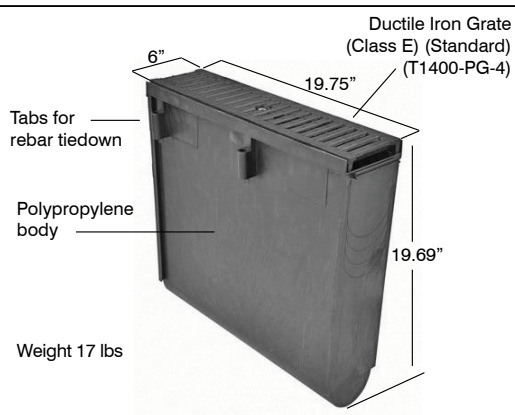
CATCH BASINS - FOR T1400 TRENCH DRAINS

Specification: MIFAB® Series T1400-CB620, 6" wide, 20" long x 19.69" deep catch basin. Body is manufactured from polypropylene. Each body has four tabs for #3 rebar tie down and leveling. Bodies have interlocking ends and a radiused bottom for efficient liquid drainage. End outlets are available in 2", 3" and 4" no hub outlet connections. Grate options include ductile iron, galvanized steel, stainless steel and plastic along with grate lockdown hardware for each grate to secure to the body. These grates are available in Class A, B, C, D and E along with ADA compliance.

Function: Used in airports, car washes, malls and plazas, golf courses, factories and any other facilities that require large areas of surface drainage. Typically installed in the middle of a T1400 section of trench drain to receive debris and redirect waste water. Chemical resistant polypropylene material provides for long life.



CROSS INSTALLATION



4" SLIP FIT CONNECTION

- **4" OUTLET SLIP FIT CONNECTION** - can be used on any flat wall to create an outlet.
- **Catch basin inlet adapter** - allows for easy connection of any depth trench body section into catch basin.

T1400-CB620 - Features and Benefits

- **Lightweight and Strong** - Polypropylene material is acid resistant and lightweight for easy handling.
- **Interlocking Connections** - Body sections are easily snapped into both ends of the catch basin. No screws, hardware or transition pieces are required. The catch basin has knockout connections at both ends to receive the trench drain body section. This ensures that the trench drain body sections always drain to the catch basin.

| Suffix | Description |
|---|--|
| Ductile Iron Grates (all 20" long. Two grates required per body section) (Must use frame with grates - Load Class C and greater) | |
| -BA | Buy American Act compliant product |
| -4 | Ductile Iron, Extra Heavy Duty, Slotted grate - Class E |
| -HP-4 | Ductile Iron, Heel Proof Longitudinal Slotted Grate, Special Duty - Class E |
| -HP-4-13 | Ductile Iron, Galvanized, Heel Proof Longitudinal Slotted Grate, Special Duty - Class E |
| -LG-4 | Ductile Iron, Extra Heavy Duty, Longitudinal Slotted grate - Class E |
| -LG-4-13 | Ductile Iron, Galvanized, Extra Heavy Duty, Longitudinal Slotted grate - Class E |
| -PA | Pennsylvania Steel Act compliant product |
| -4-13 | Ductile Iron, Galvanized, Extra Heavy Duty, Slotted grate - Class E |
| -4-3 | Ductile Iron, Extra Heavy Duty Slotted grate with Stainless Steel Veneer - Class E (must order together with Steel frame with Stainless Steel veneer. Part # for assembly is T1400-PFO-TA-3 with open frame. (39.40" long steel frame with S.S. veneer and two D.I. grates with S.S. veneer) |
| -7MG | MI-GARD trap seal protection device (available for 1-1/2", 2", 3", 3-1/2", 4" and 6" outlet connections) |
| -LG-4-3 | Ductile Iron, Extra Heavy Duty Longitudinal Slotted grate with Stainless Steel veneer (must order together with Steel frame with Stainless Steel Veneer - Class E) Part # for assembly is T1400-LG-PFO-TA-3 with open frame. (39.40" long steel frame with S.S. veneer and two D.I. grates with S.S. veneer) |
| Fabricated Grates (Must use frame with grates - Load Class C and greater) | |
| -AWG | Aluminum wire grate - Class A, 40" long |
| -CDA | Stainless Steel, Circular Decorative grate - Class A, 40" long |
| -DDA | Stainless Steel, Diagonal Decorative grate - Class A, 40" long |
| -SSDA | Stainless Steel, Decorative grate - Class A, 40" long |
| -DSG | Steel, Diagonal Decorative grate - Class A, 40" long |
| -DWG | Steel, Decorative wave grate - Class A, 40" long |
| -FSGA | Galvanized Steel, Fabricated Slotted grate - Class A, 40" long |
| -FS | Stainless Steel, Fabricated Slotted grate - Class A, 40" long |
| -HPSS | Stainless Steel, Fabricated Heel Proof Slotted grate - Class A, 40" long |
| -HPP | Polypropylene, Heel Proof Slotted grate - Class A, 20" long (grate is a black color) |
| -HPP-TAN | Polypropylene, Heel Proof Slotted grate - Class A, 20" long (grate is a tan color) |
| -HPP-GREY | Polypropylene, Heel Proof Slotted grate - Class A, 20" long (grate is a grey color) |
| -PGG | Galvanized Steel, Fabricated Perforated grate - Class A, 40" long |
| Fabricated Grates (Must use frame with grates - Load Class C and greater) (See pages 33-35 for additional grate information) | |
| -PS | Stainless Steel, Fabricated Perforated grate - Class A, 40" long |
| -PHPP | Heel Proof Polypropylene, Perforated, Light Duty - Class A, 20" long (grate is a black color) |
| -SSWG | Stainless Steel, Fabricated Wire grate - Class A, 40" long |
| -SDG | Steel, Fabricated Decorative grate - Class B, 40" long |
| -LGHP | Steel, Fabricated Heel Proof Longitudinal grate - Class B, 40" long |

| | |
|---|--|
| -FSB | Galvanized Steel, Fabricated Reinforced Slotted grate - Class B, 40" long |
| -CDB | Stainless Steel, Circular Decorative grate - Class B, 40" long |
| -ddb | Stainless Steel, Diagonal Decorative grate - Class B, 40" long |
| -SSDB | Stainless Steel, Decorative grate - Class B, 40" long |
| -RFS | Stainless Steel, Fabricated Reinforced Slotted grate - Class B, 40" long |
| -RG | Galvanized Steel, Reinforced Perforated grate - Class B, 40" long |
| -RPS | Stainless Steel, Fabricated Reinforced Perforated grate - Class B, 40" long |
| -SBGGS | Galvanized Steel, Fabricated Slotted Bar grate - Class C, 40" long |
| -SBGST | Steel, Fabricated Slotted Bar grate - Class C, 40" long |
| -CDC | Steel, Fabricated Circular Decorative grate - Class C, 40" long |
| -SC | Steel, Fabricated Solid Cover - Class E, 40" long |
| -SBG | Stainless Steel, Fabricated Bar grate - Class E, 40" long |
| Frames | |
| -HD | Extra H.D. 1 meter long angle iron steel frame assembly with anchor studs |
| -HD-13 | Extra H.D. 1 meter long galvanized angle iron steel frame assembly with anchor studs |
| -HD-3 | Extra H.D. 1 meter long angle iron steel frame assembly with S.S. veneer and anchor studs |
| -SVF | Type 304 stainless steel plastic body veneer, 2 pieces, 1 meter long Stainless Steel frame veneers, open frame for pedestrian traffic only, Load Class A. To be placed over top edges of T1400 body. |
| End caps / Outlets / Accessories | |
| -PEC | Includes the T1400-PEC-30 end cap, two pieces of body clips (T1400-CLIP) and one finish cap (T1400-PEFC) |
| -PEFC | Top Finishing cap (always included with the T1400-PEC-30 Closed end cap) |
| -PE4 | Includes the T1400-PE4-30 end outlet, two pieces of body clips (T1400-CLIP) and one finish cap (T1400-PEFC) |
| -PB4 | Combination 3" or 4" Polypropylene No Hub bottom outlet |
| Standard | Support board (one per body always included) |
| -PBDS | Bottom dome strainer |
| Standard | Connecting Clips (to connect bodies together) |
| Standard | 3 1/2" long grate lockdown hardware |
| - | 3 1/2" long Stainless Steel grate lockdown hardware (per grate) |
| -PGLVP | 3 1/2" long vandal resistant grate lockdown hardware (per grate) |
| Fabrications | |
| Suffix | Description |
| -CUT | Cutting / per cut - Net Price only |
| -TEE | Polypropylene tee (available in T1400N-TEE, T1405N-TEE, T1410N-TEE and T1415N-TEE models) |
| -45 | 45s (available in T1400N-45, T1405N-45, T1410N-45 and T1415N-45 models) |
| -90 | 90s (available in T1400N-90, T1405N-90, T1410N-90 and T1415N-90 models) |
| -SOF | Side Outlet Fabrication |
| -CF | Cross Fabrication |

CALIFORNIA PROPOSITION 65 WARNING. This product contains chemicals known to the State of California to cause cancer and birth defects or other reproductive harm.

Job Name: _____
 Section No: _____
 Schedule No: _____

Page No: _____
 Contractor: _____
 Purchase Order No: _____